

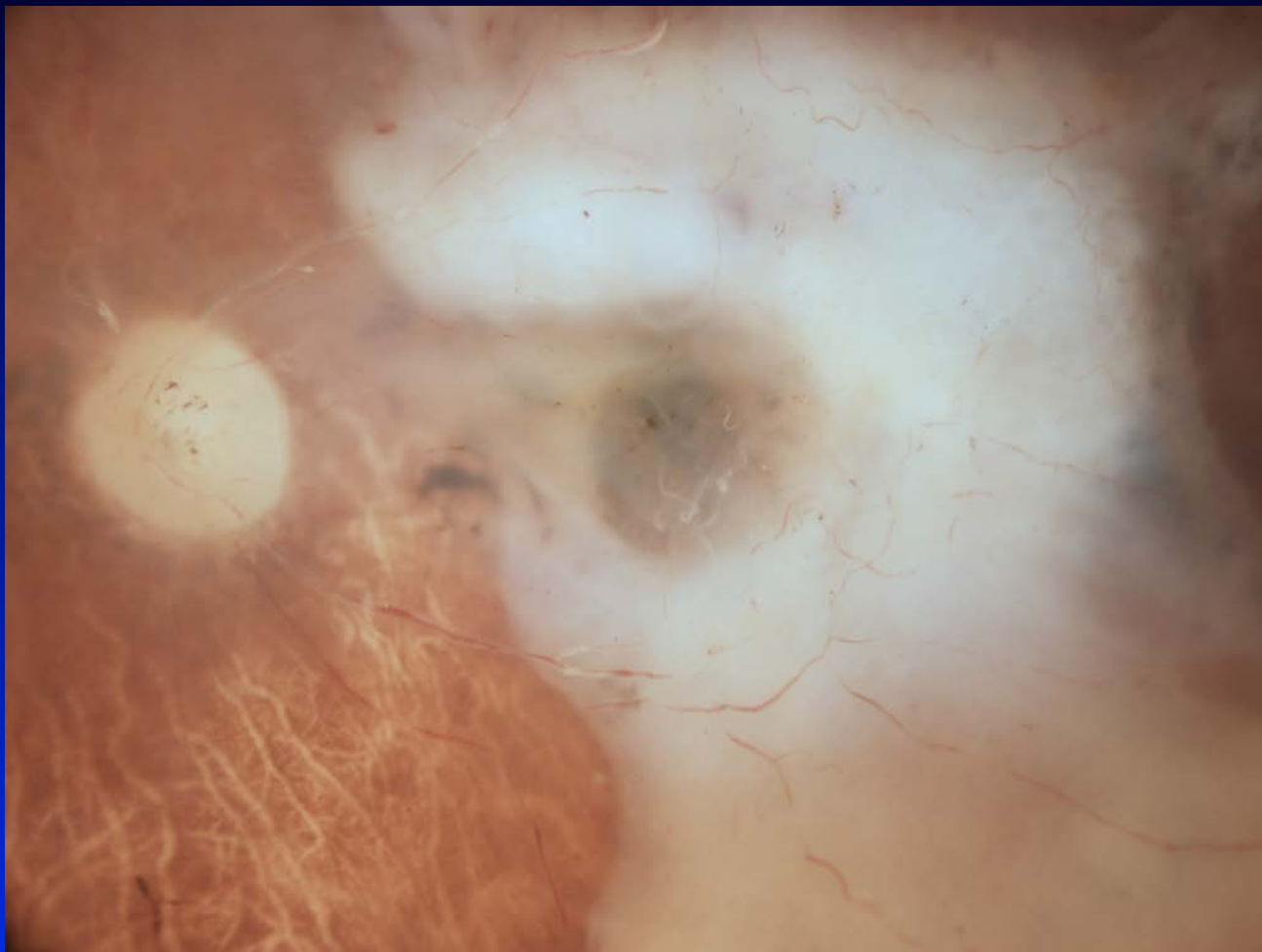
Project MACULA Case Report

2013023R

90, Caucasian female

Neovascular AMD

Shown as L

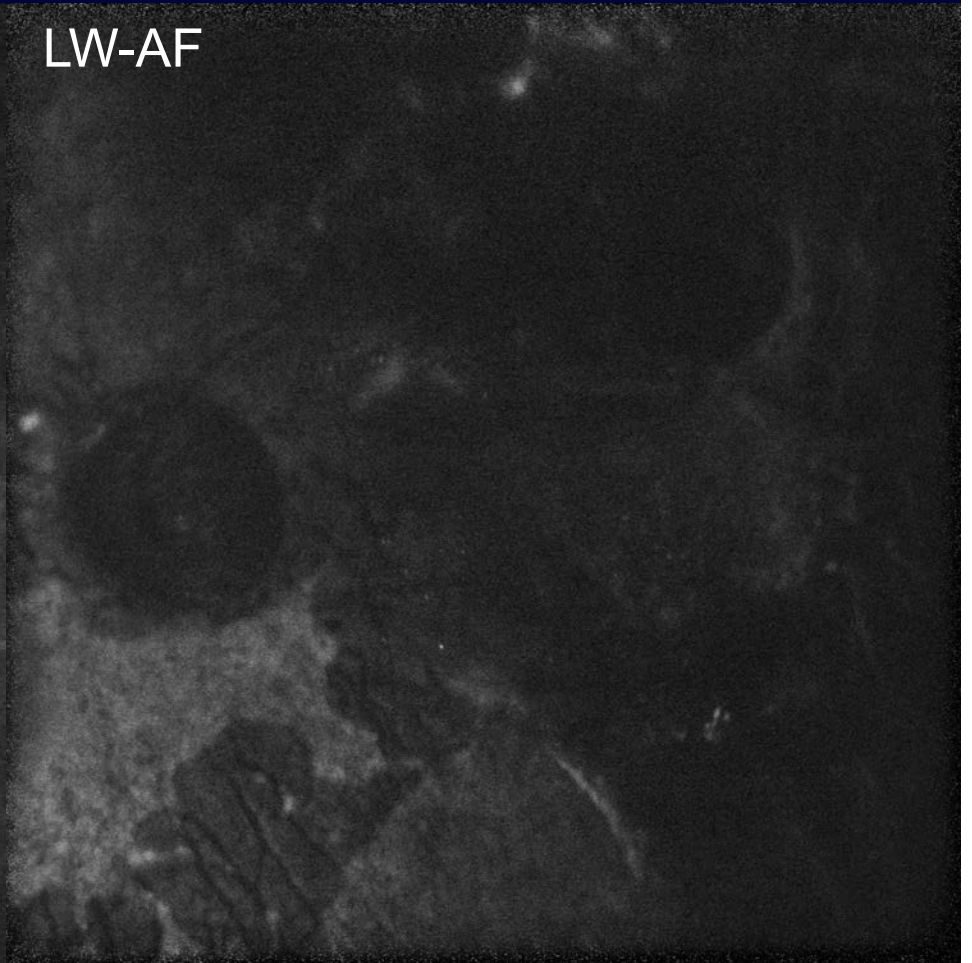
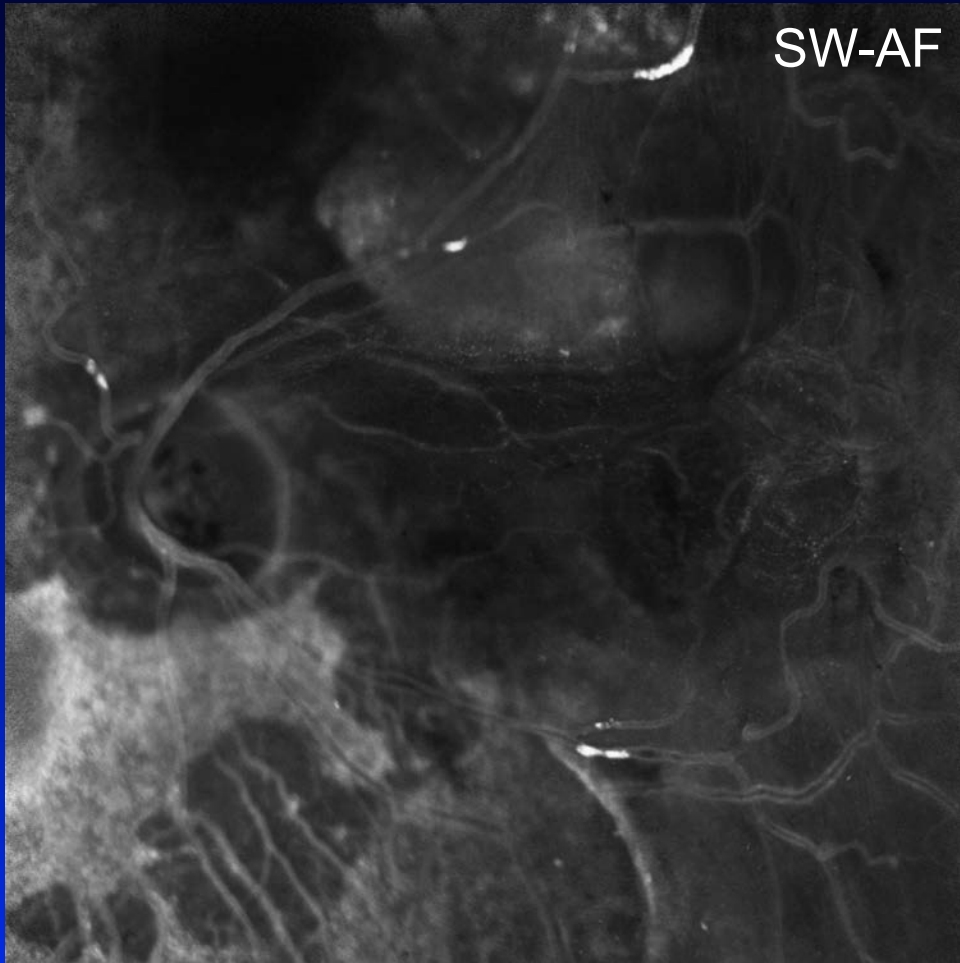


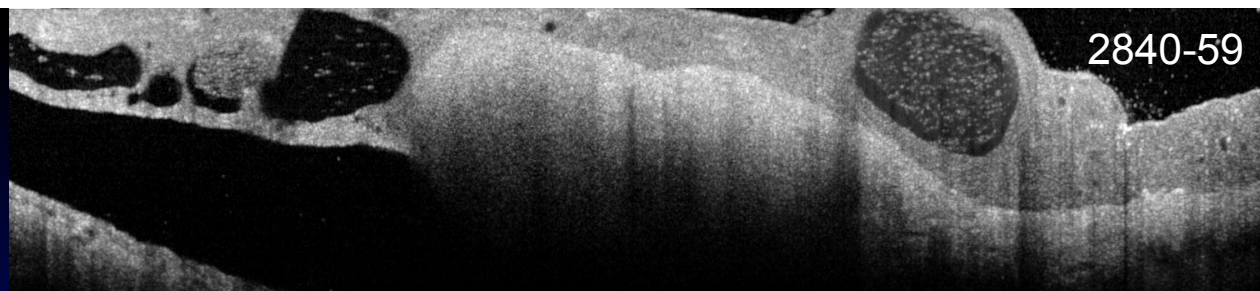
RF

IR

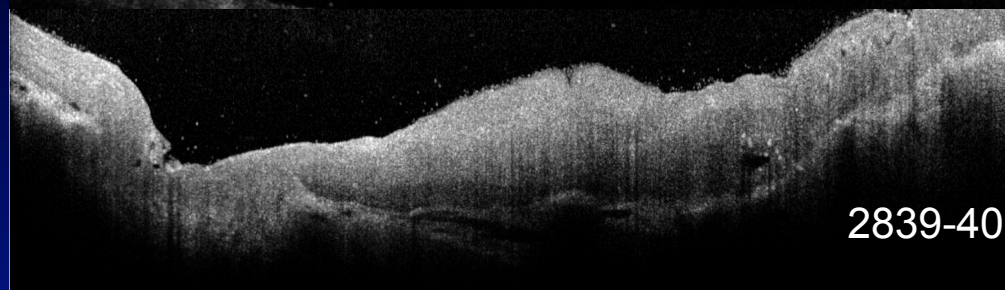
SW-AF

LW-AF

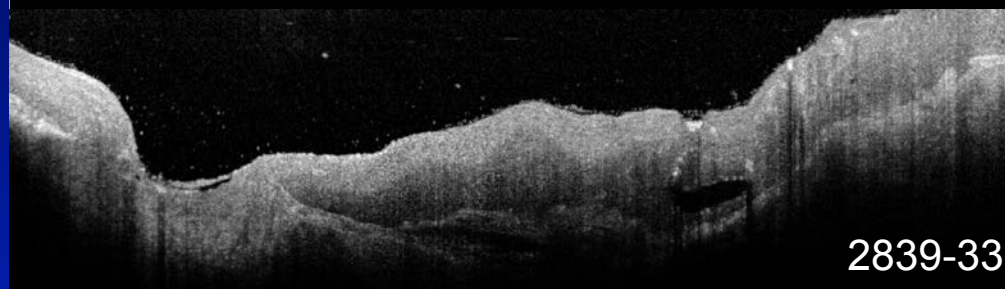




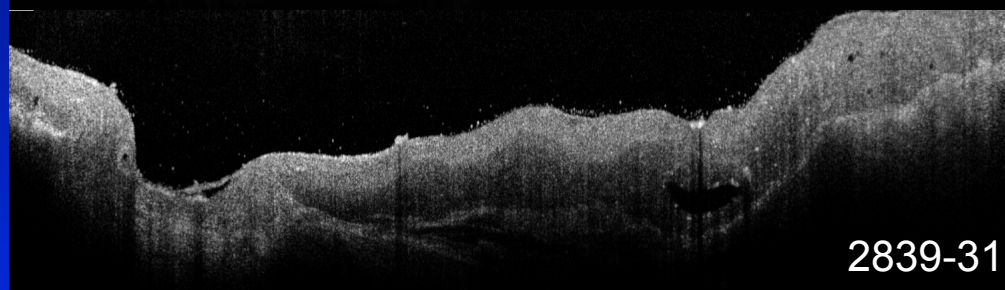
2840-59



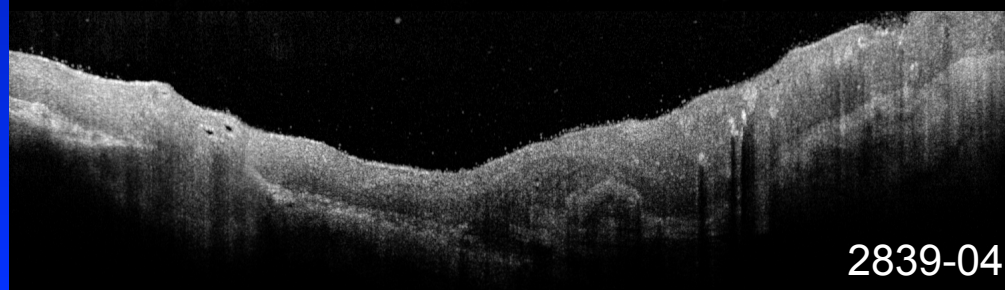
2839-40



2839-33

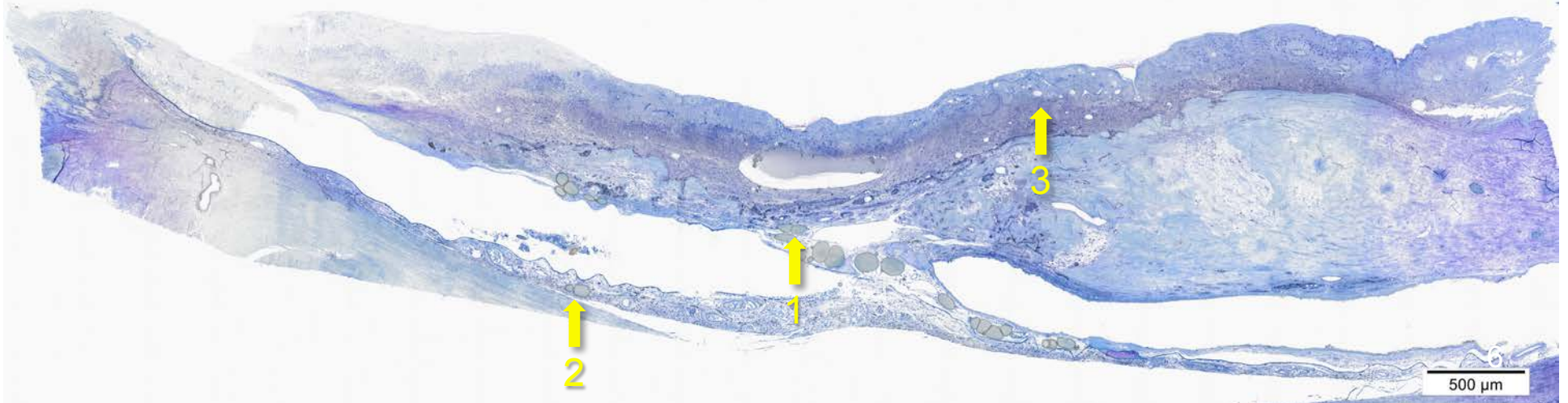
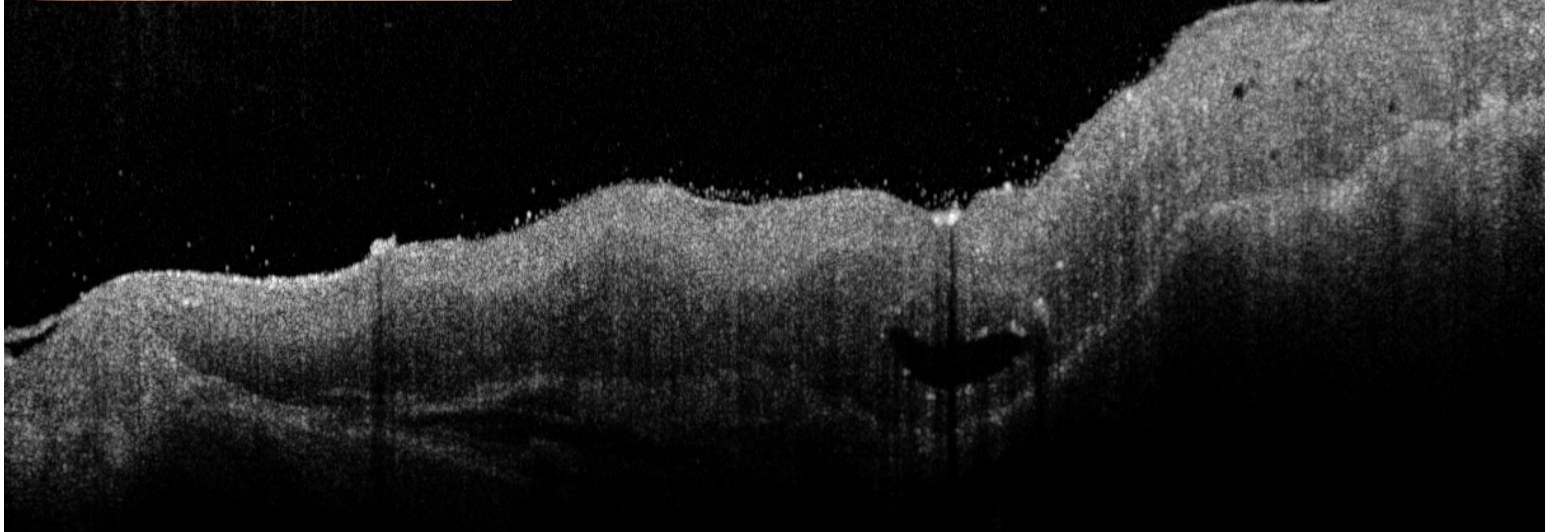
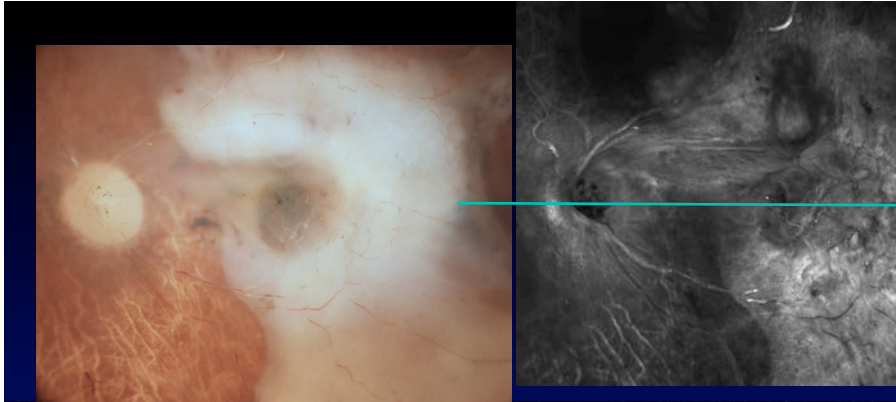


2839-31



2839-04

31 Fovea



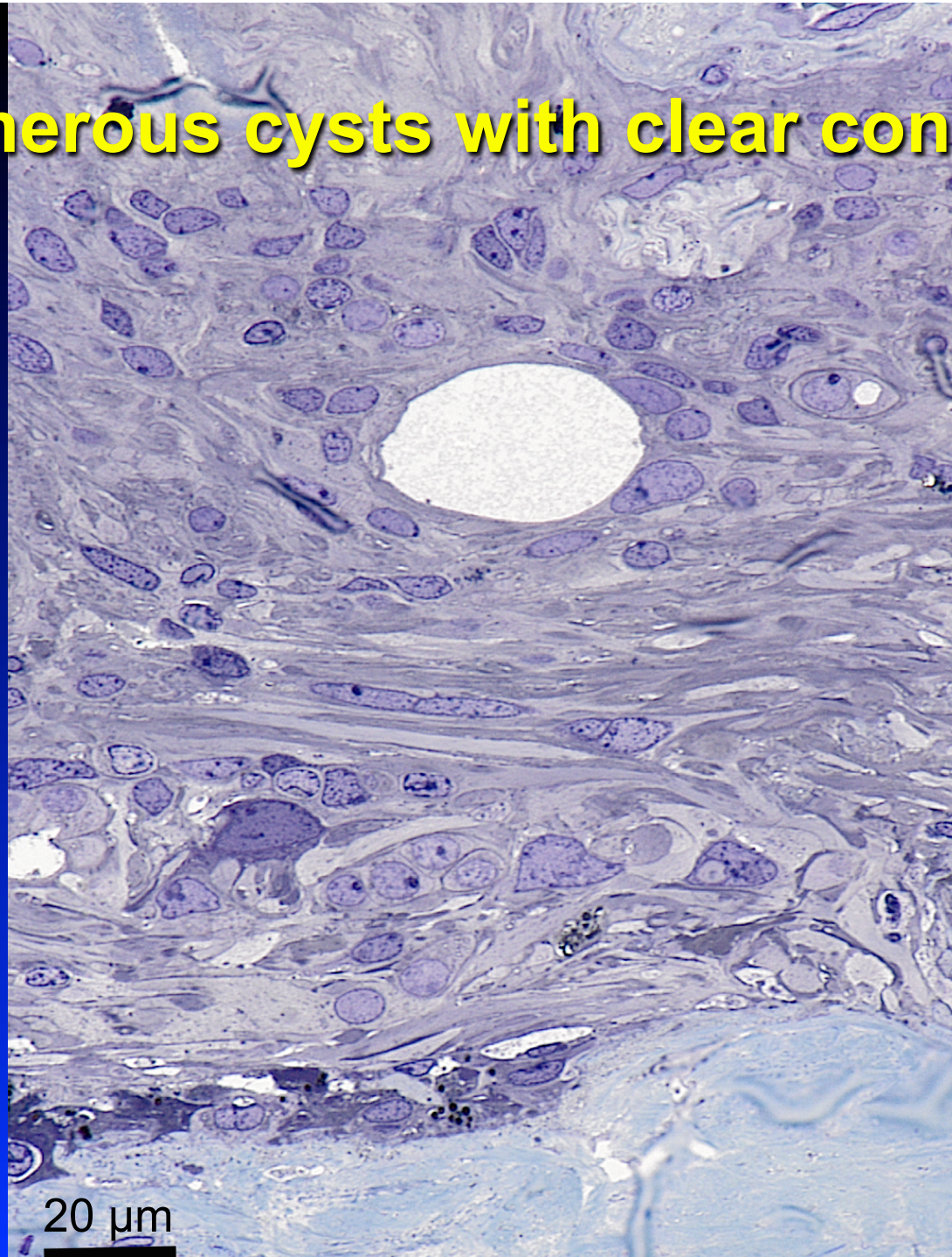
**1 lipid globules in sub-retinal
fibrovascular scar, RPE6**



2 lipid globules sub-RPE scar, break in BrM

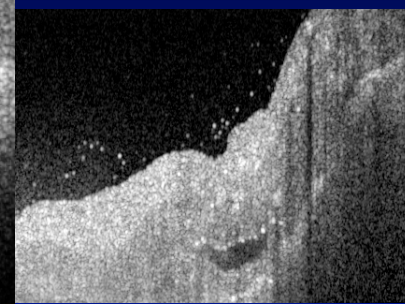
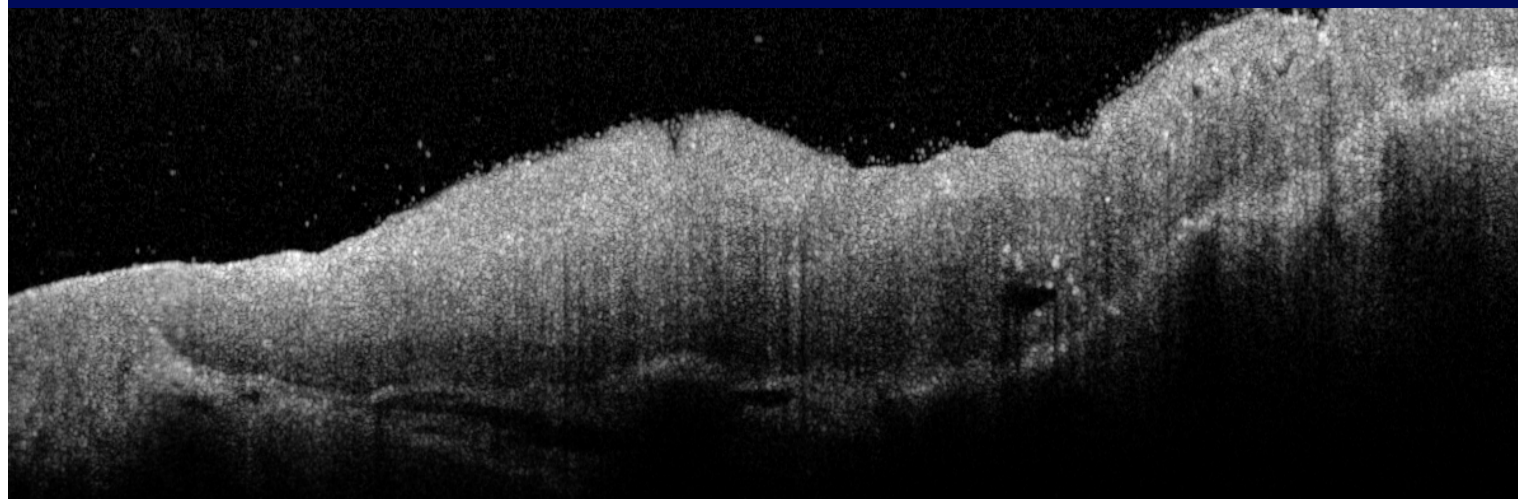
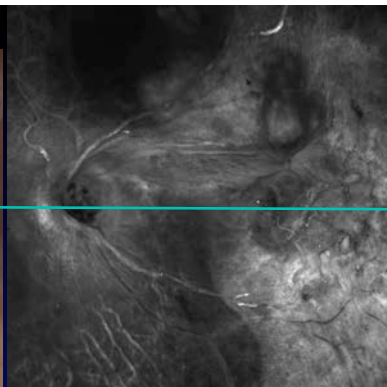
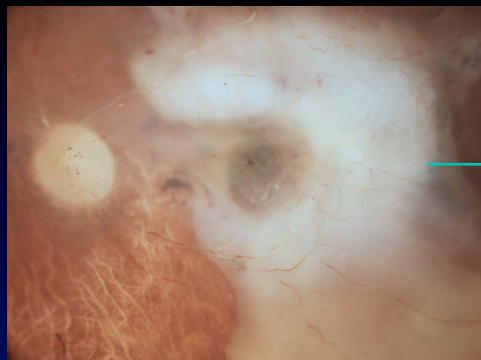


3 numerous cysts with clear contents



40

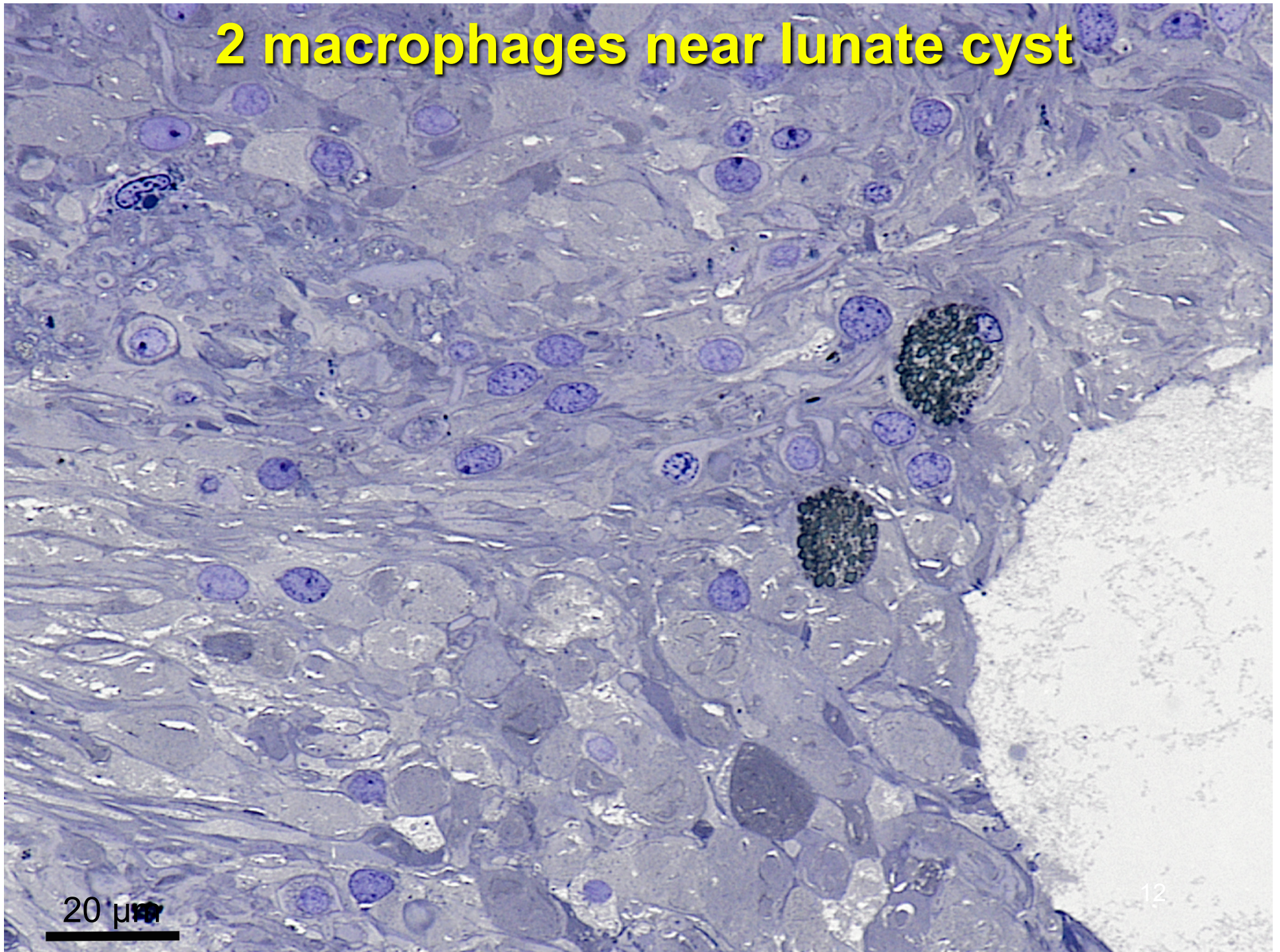
Parafovea



1 macrophages on nasal side of lunatic cyst

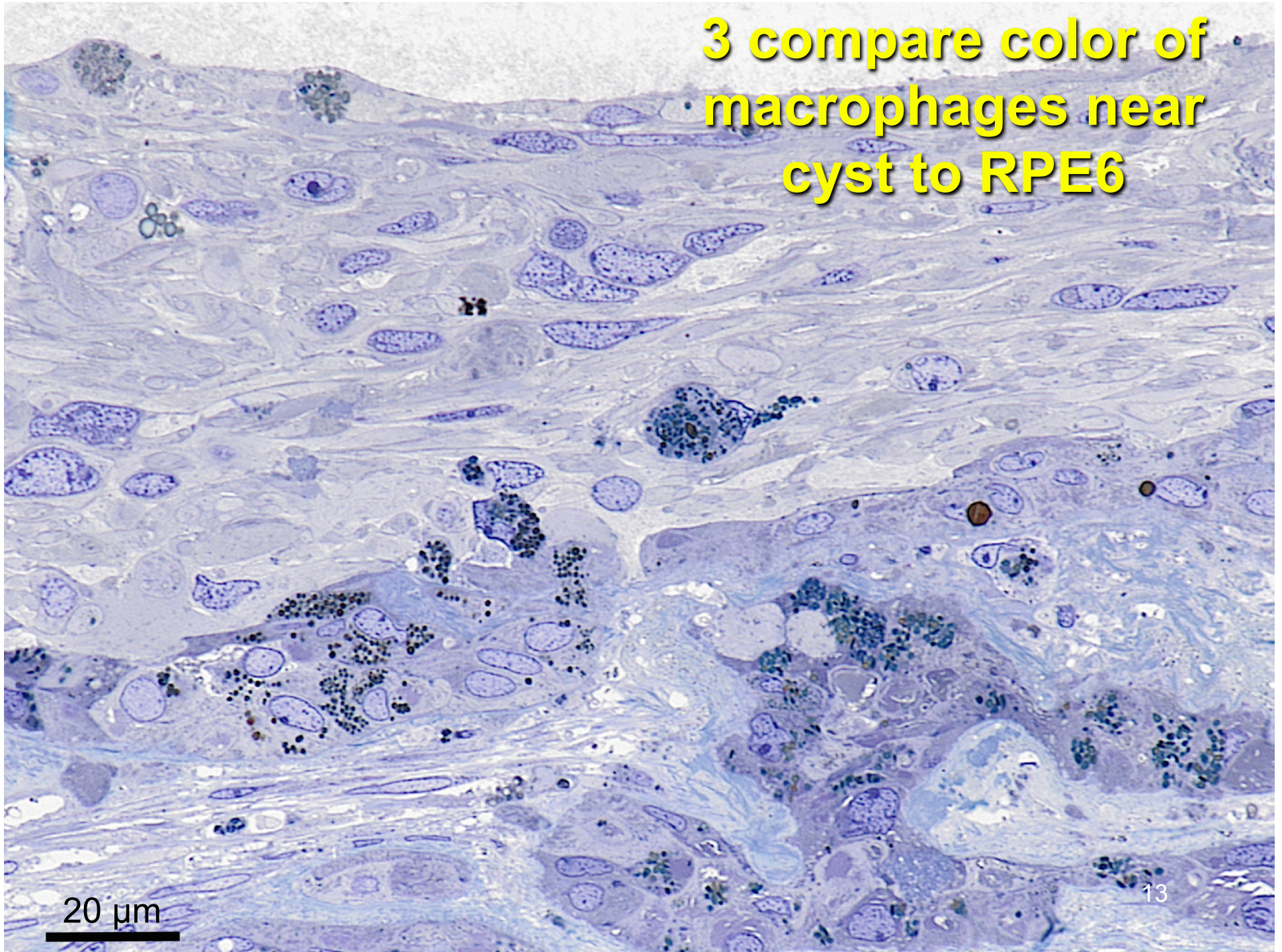


2 macrophages near lunatic cyst

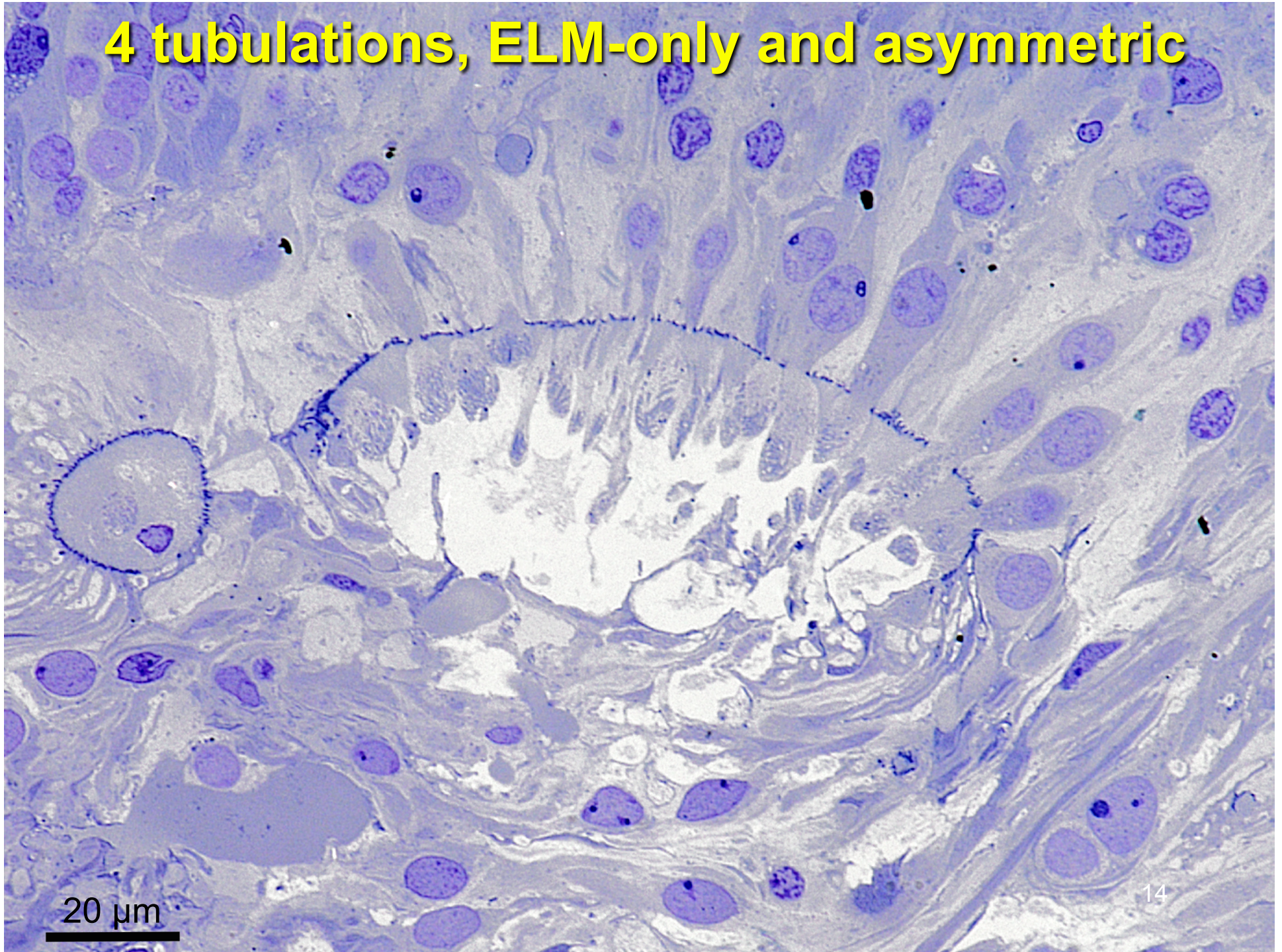


20 μm

**3 compare color of
macrophages near
cyst to RPE6**



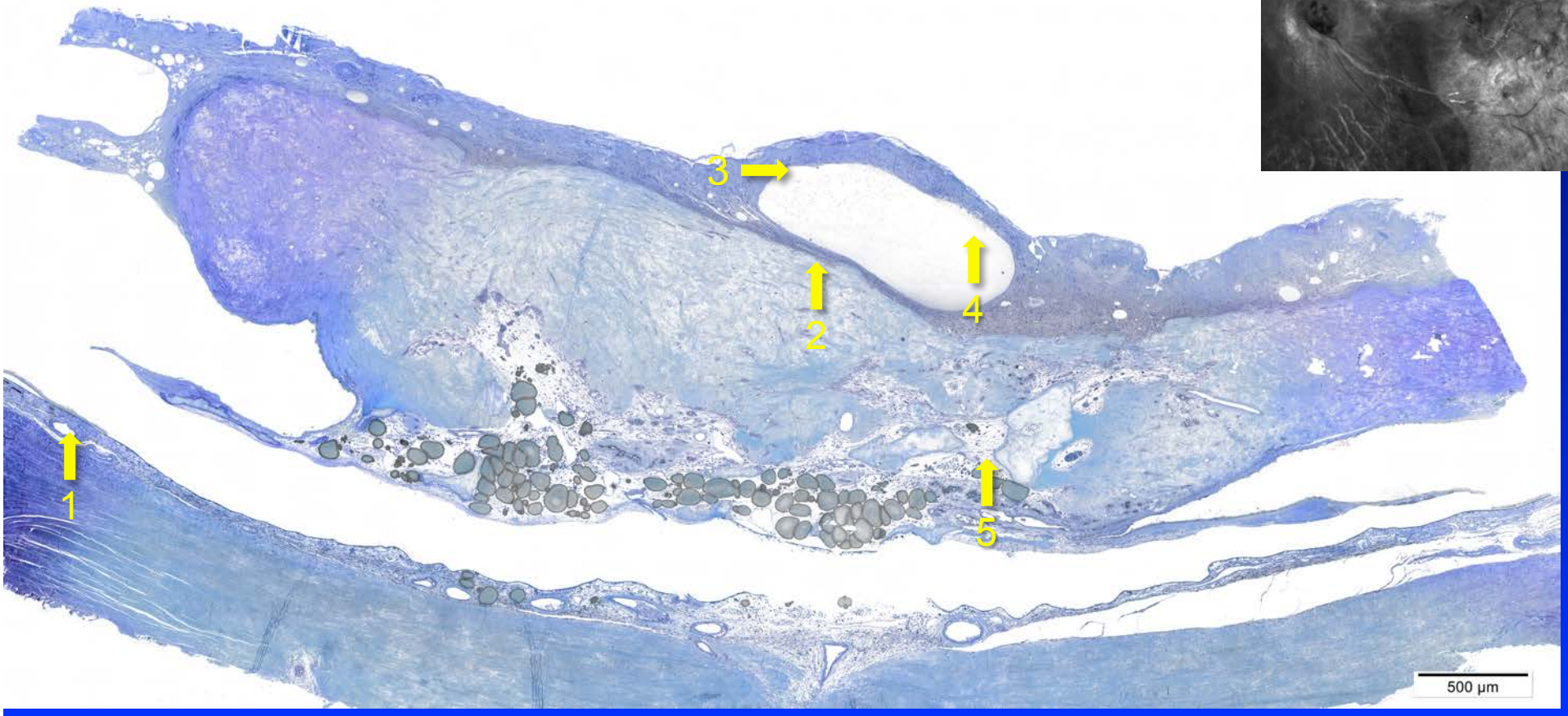
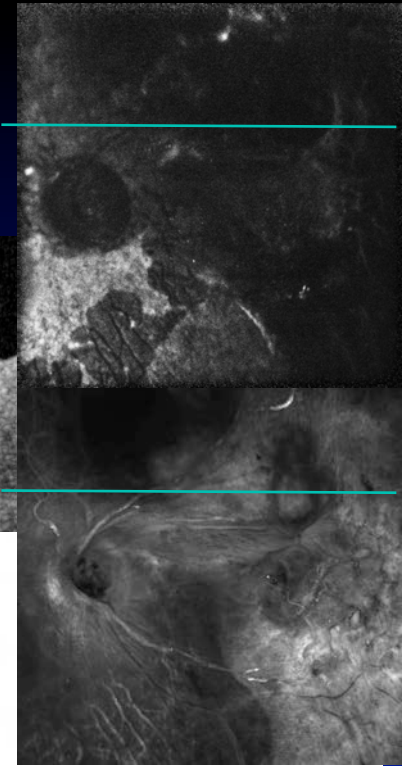
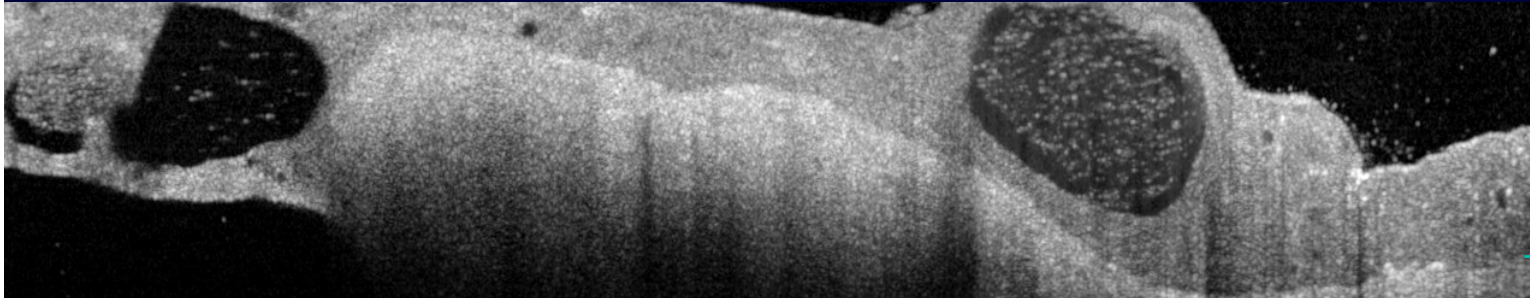
4 tubulations, ELM-only and asymmetric



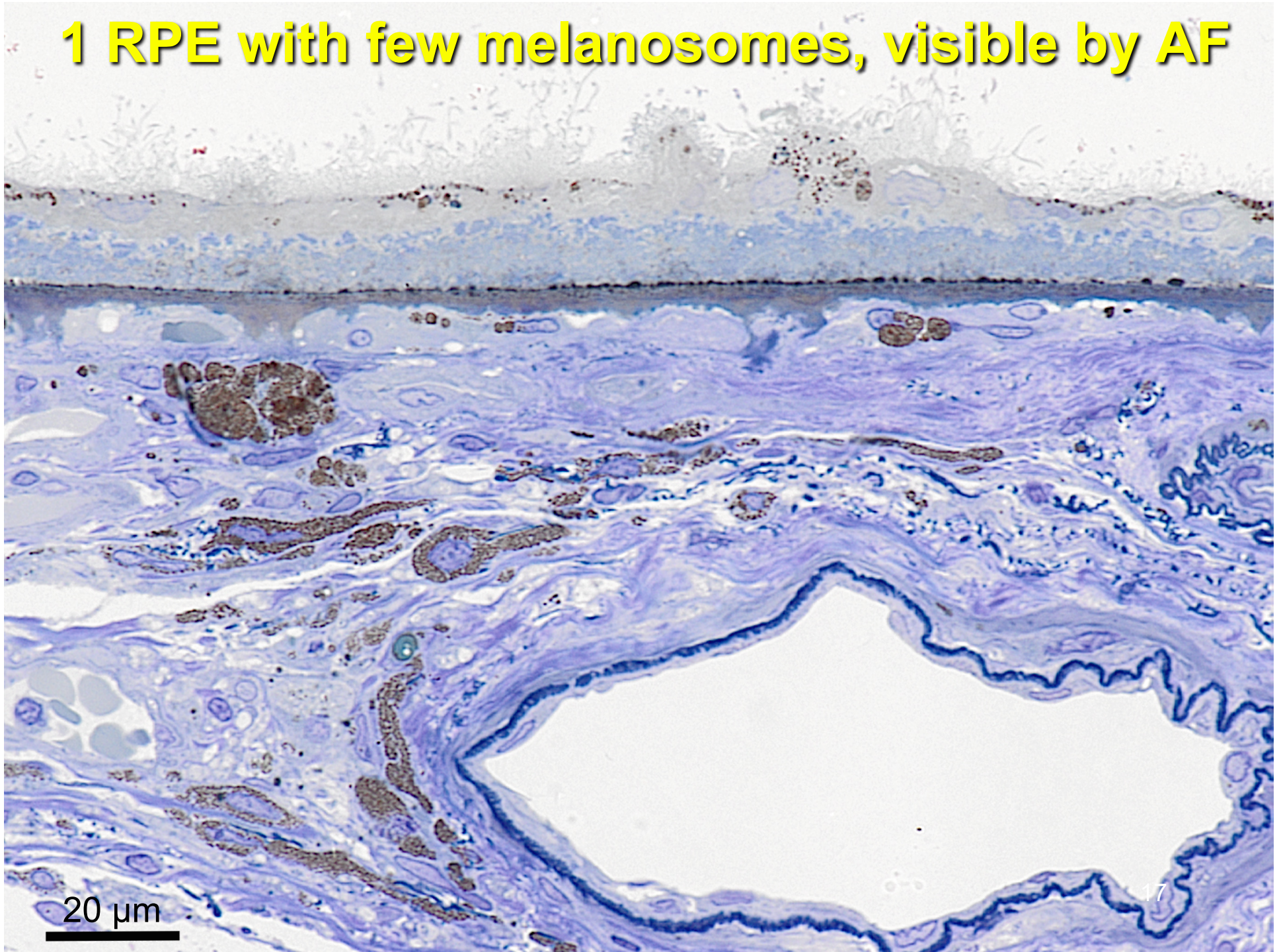
5 gravity-well tubulations (no photoreceptors)



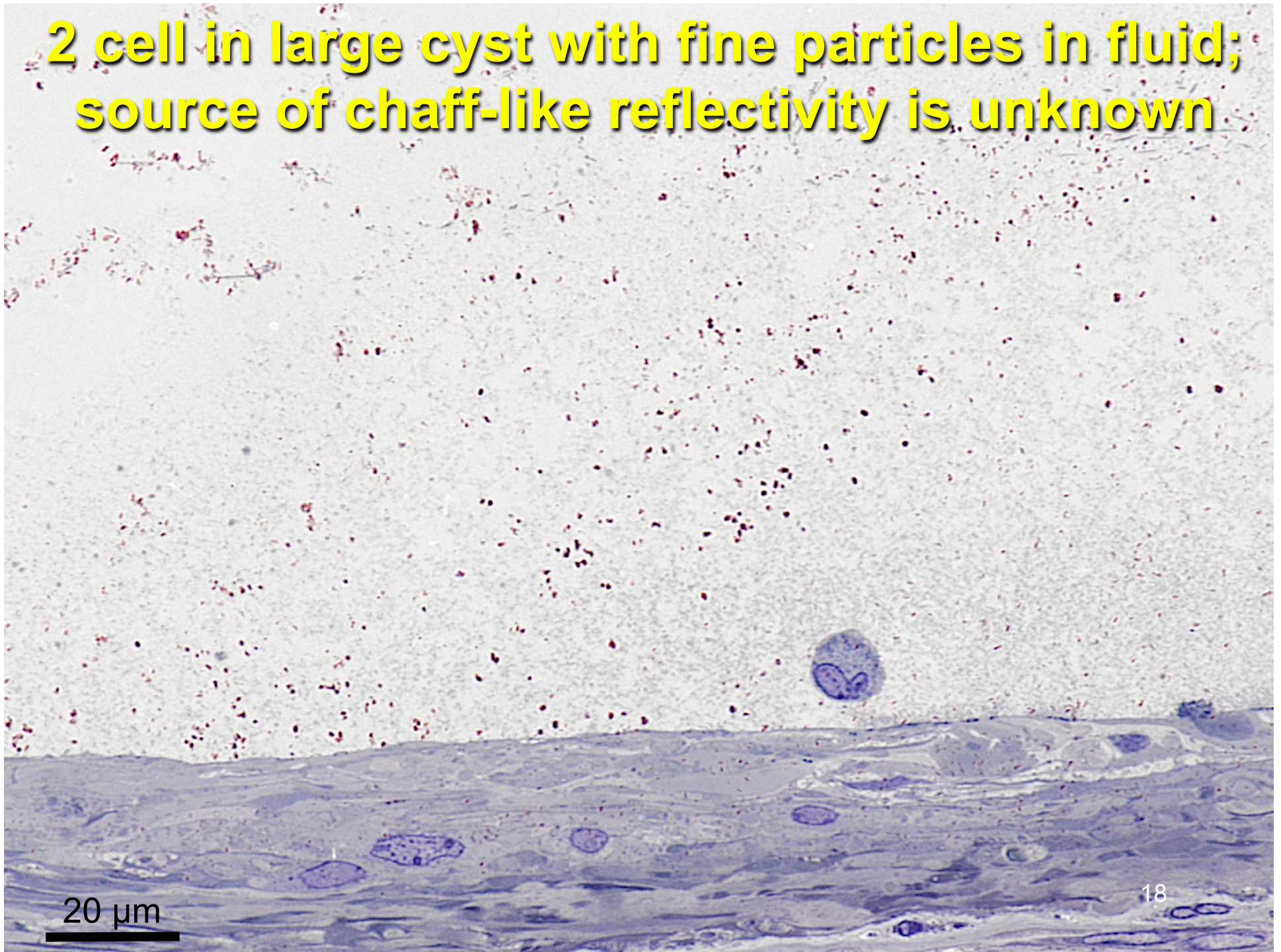
Perifovea



1 RPE with few melanosomes, visible by AF



**2 cell in large cyst with fine particles in fluid;
source of chaff-like reflectivity is unknown**



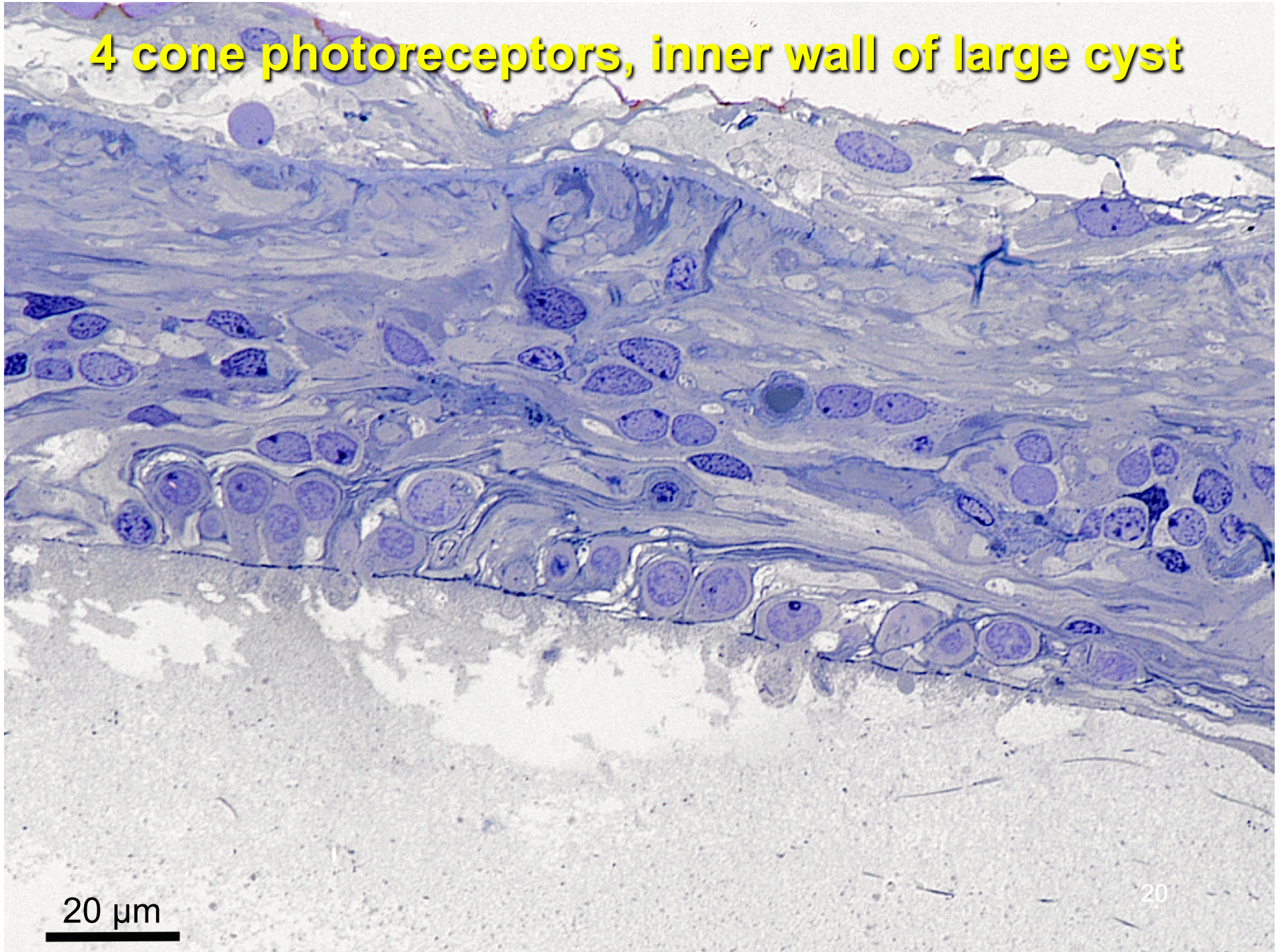
20 μm

3 cell at nasal side of very large cyst



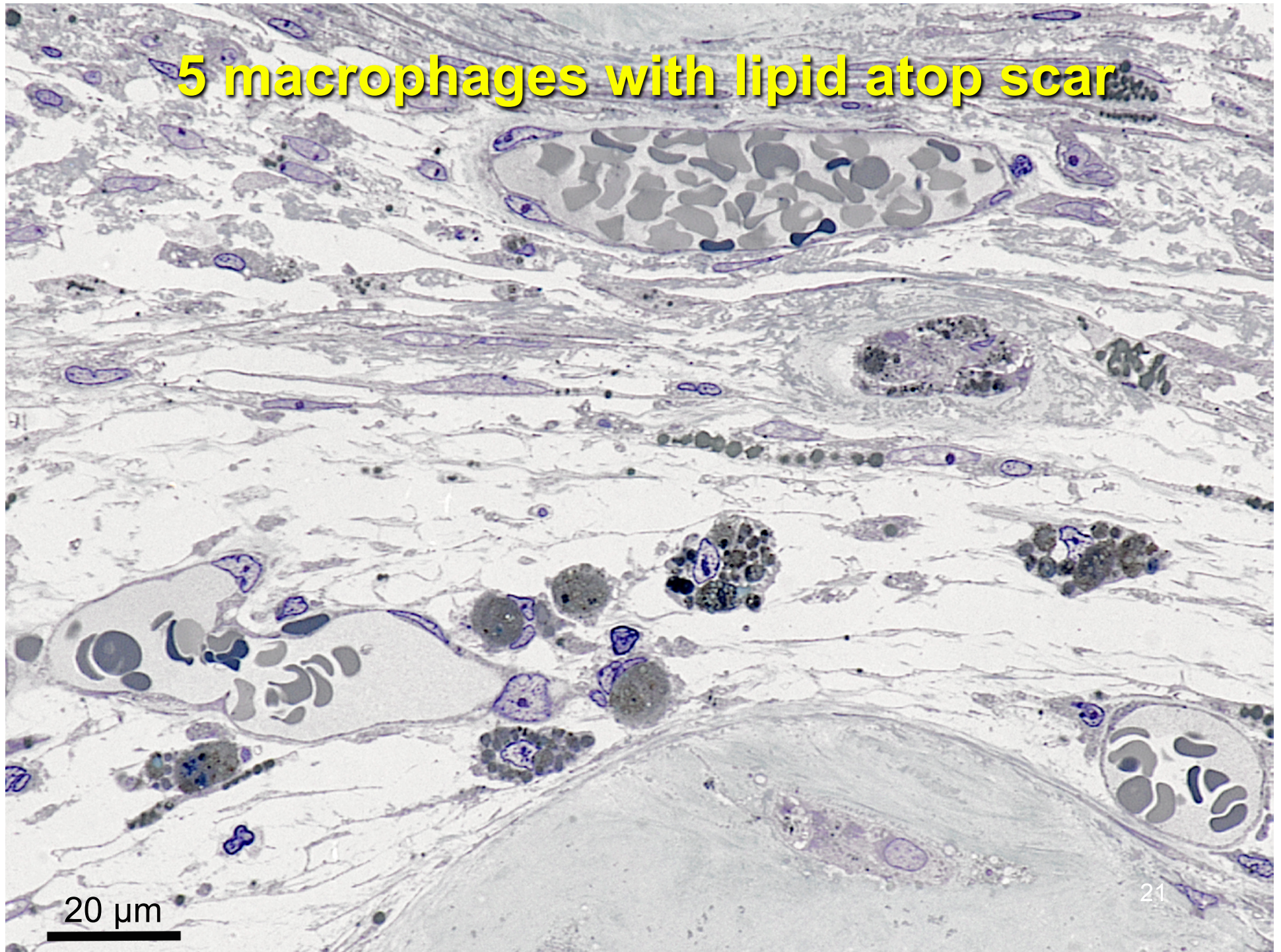
20 μ m

4 cone photoreceptors, inner wall of large cyst

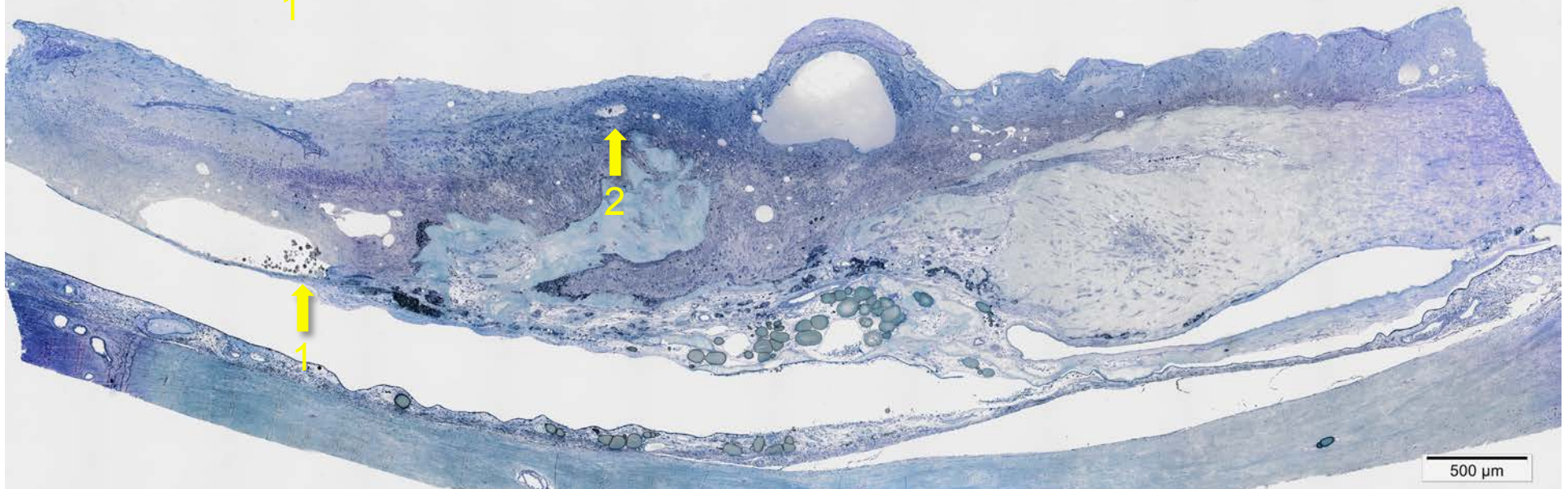
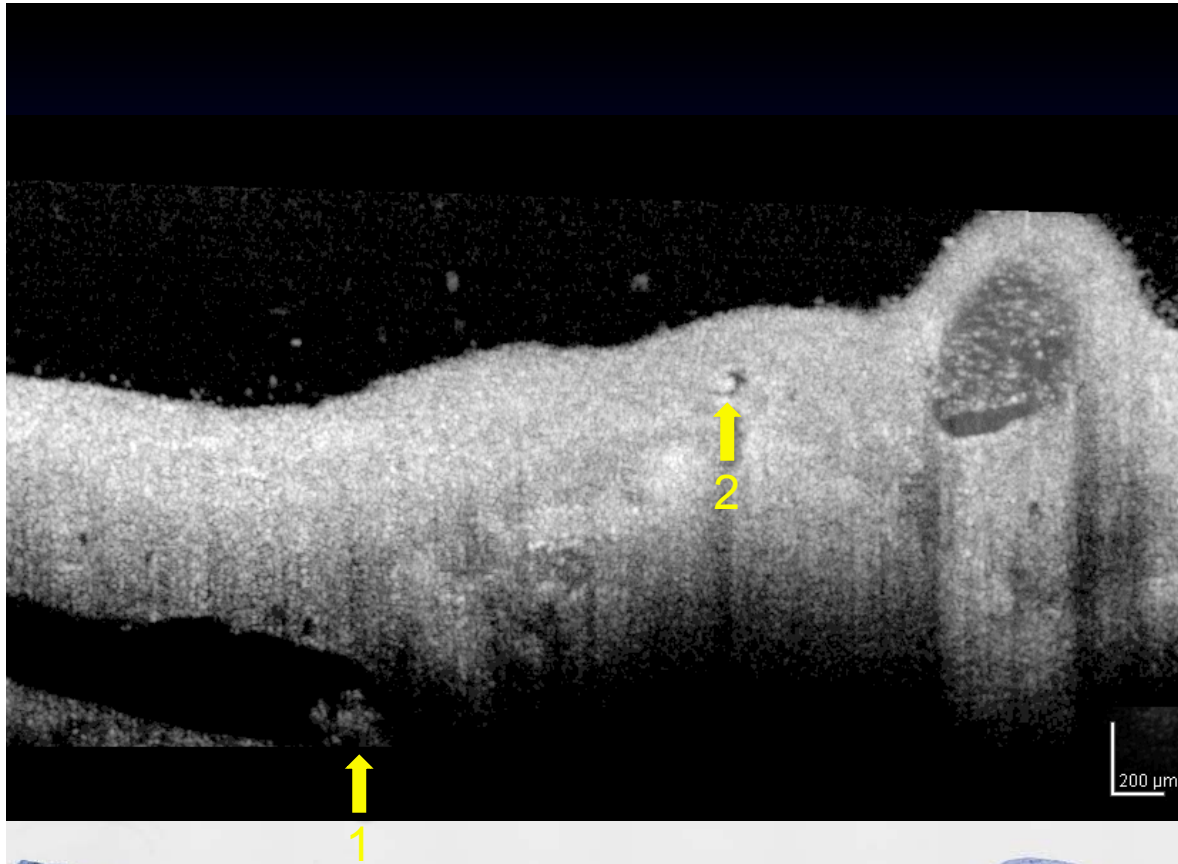


20 μ m

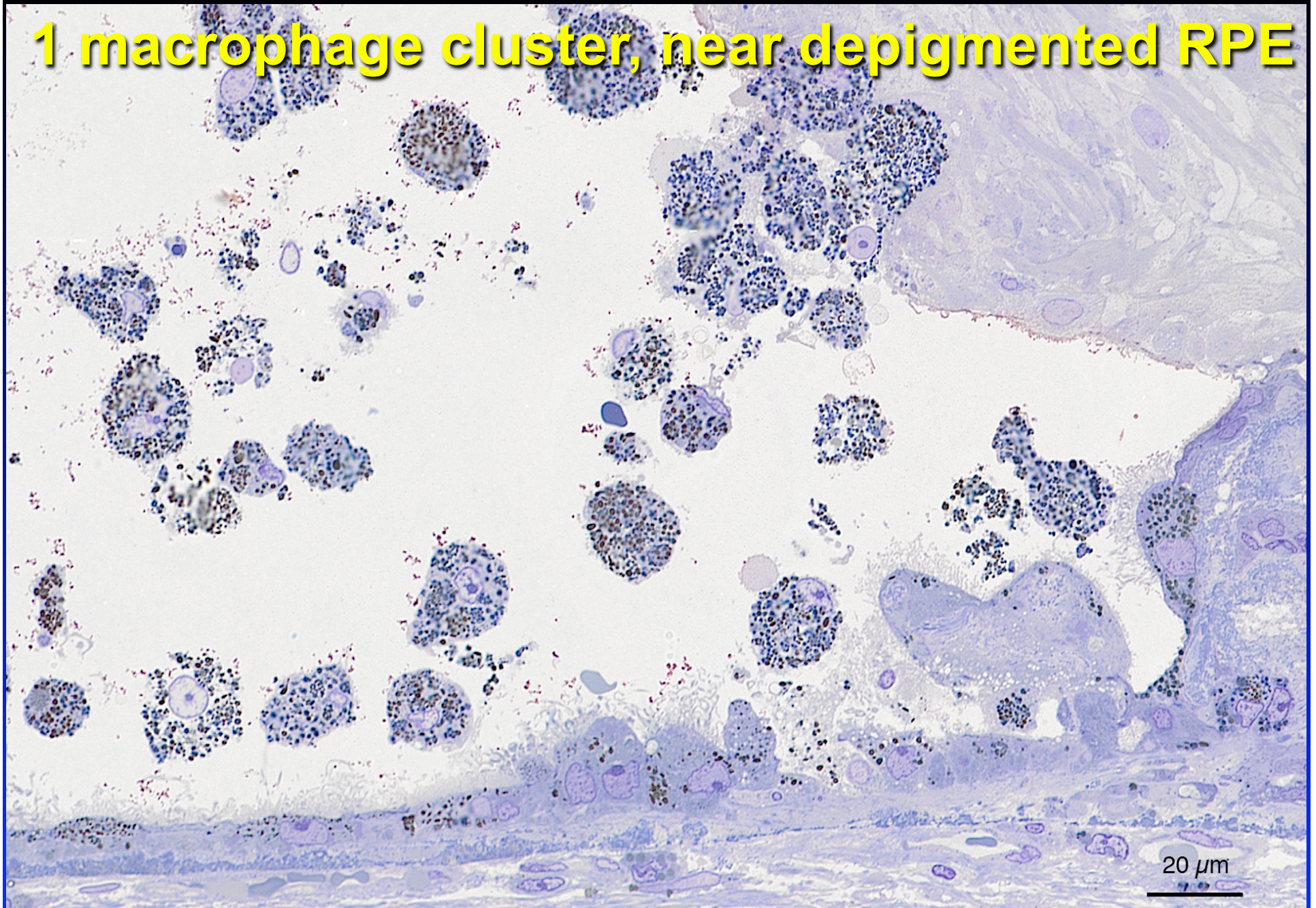
5 macrophages with lipid atop scar



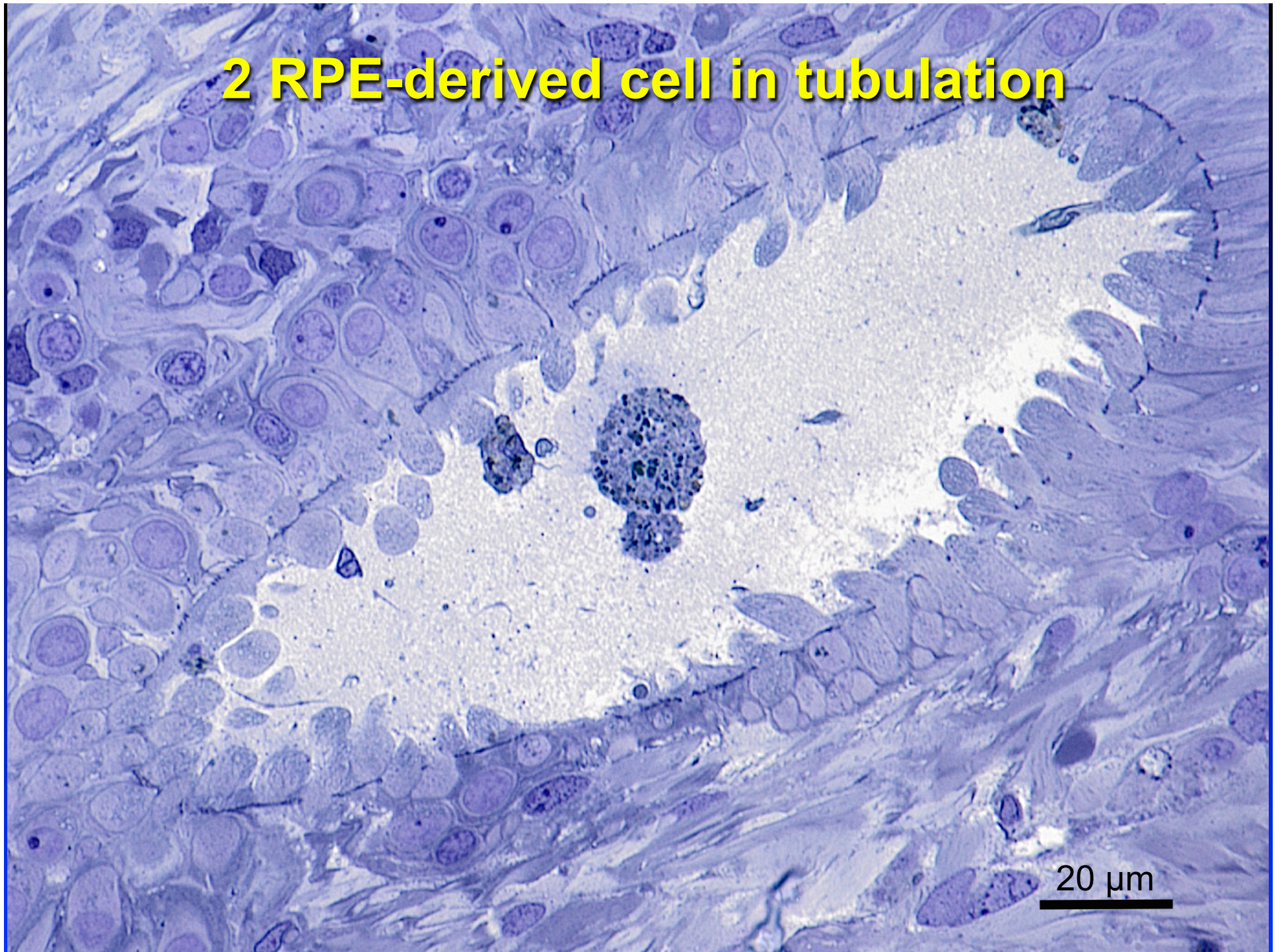
Direct correlation of cells within cyst and tubulation



1 macrophage cluster, near depigmented RPE

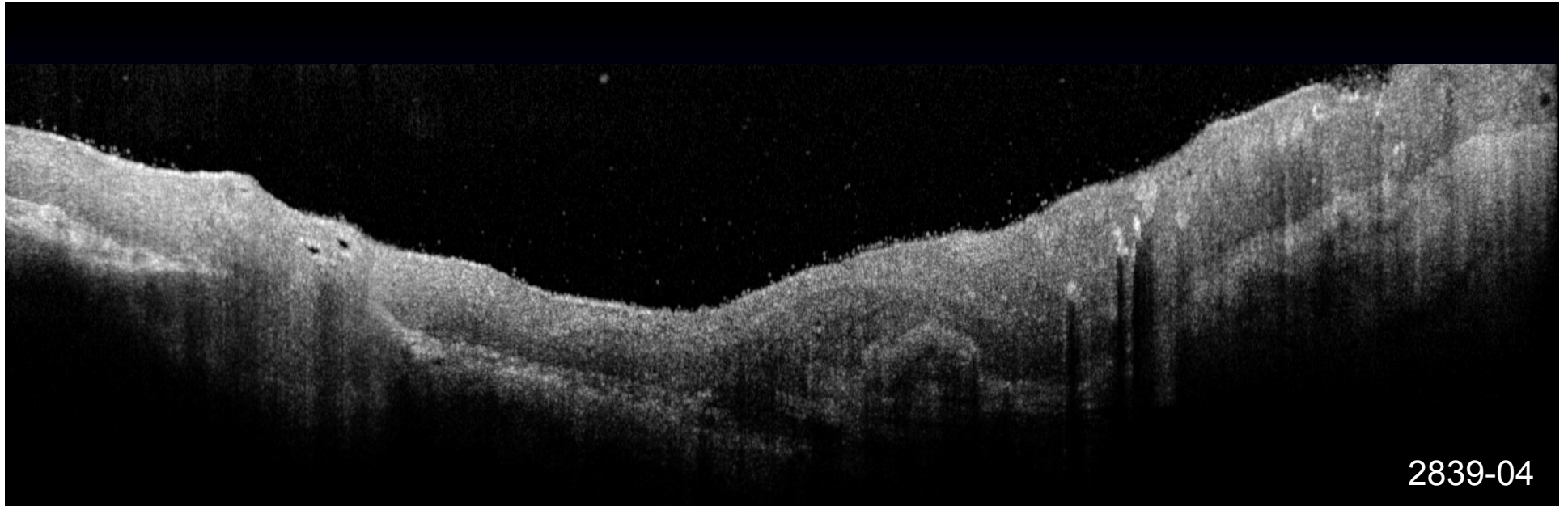


2 RPE-derived cell in tubulation

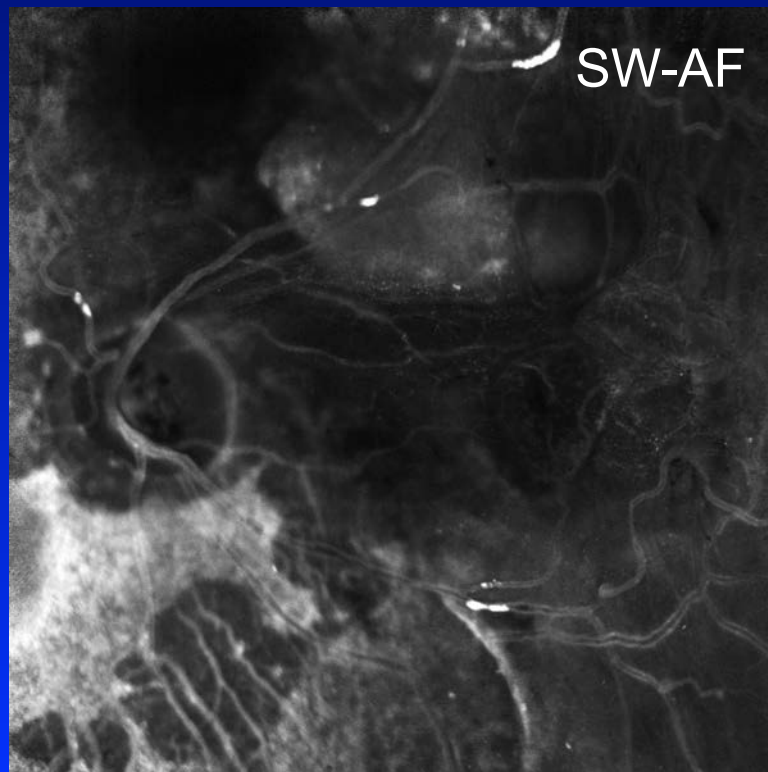


More to come

Larger intra-retinal hyper-reflective spots
SW, LW autofluorescence inferior to ONH



2839-04



SW-AF

Project MACULA Case Report

Christine A. Curcio, PhD

curcio@uab.edu

projectmacula.cis.uab.edu

