

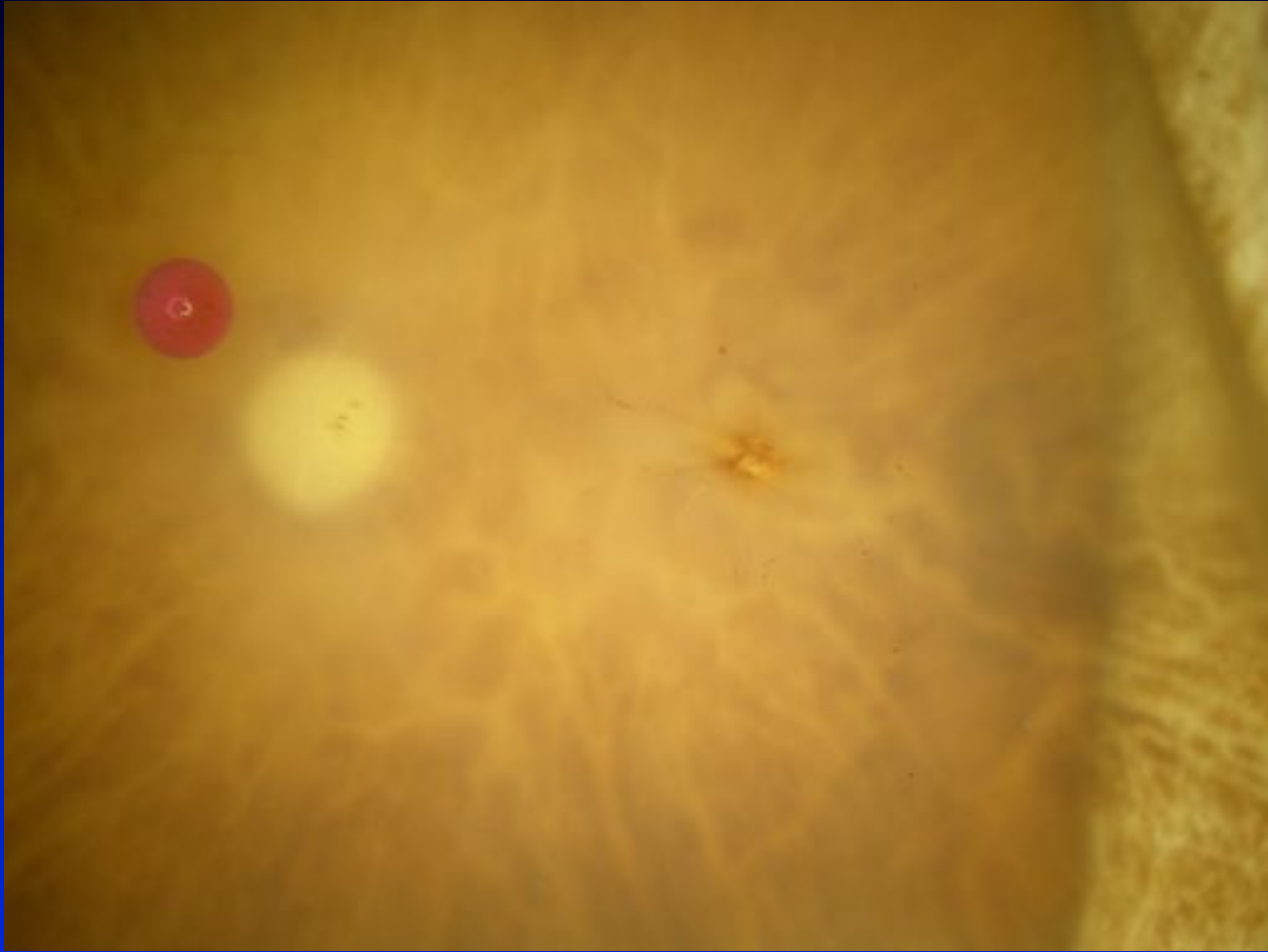
Project MACULA Case Report

2007003R

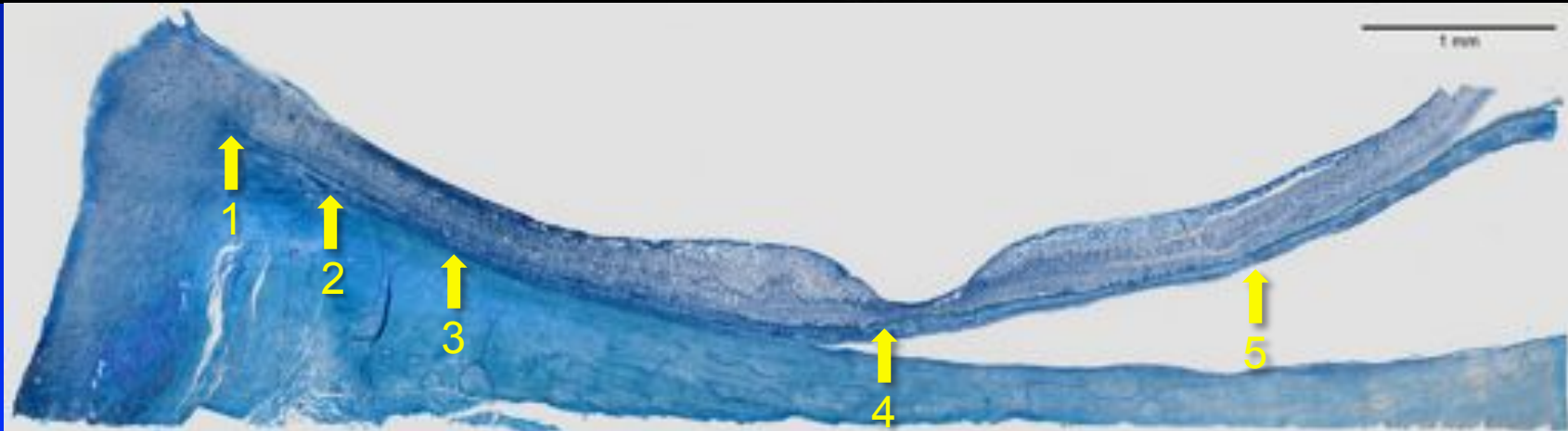
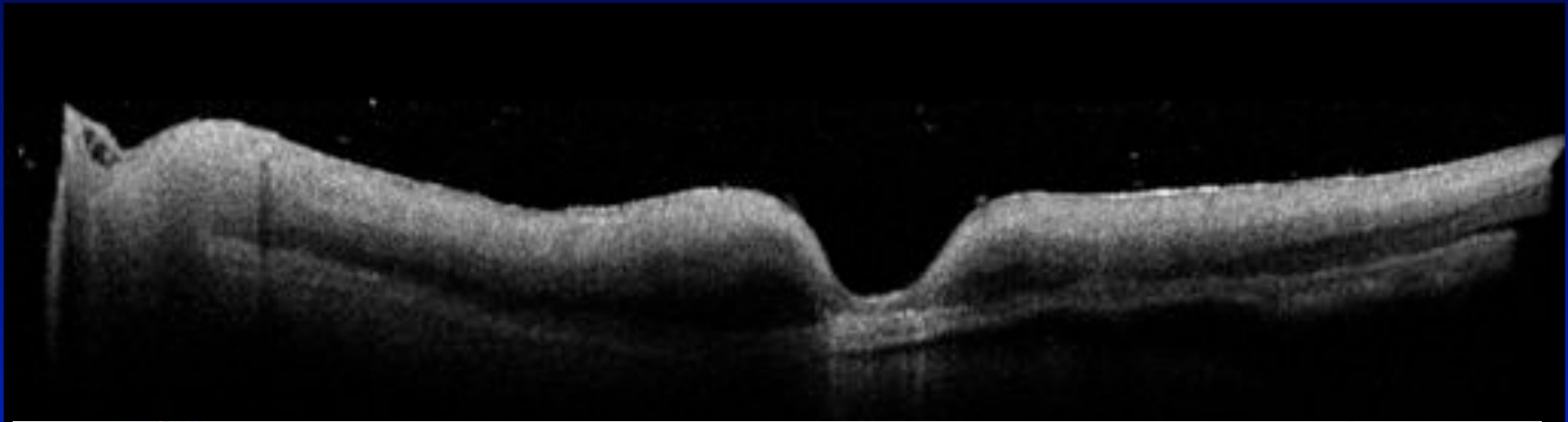
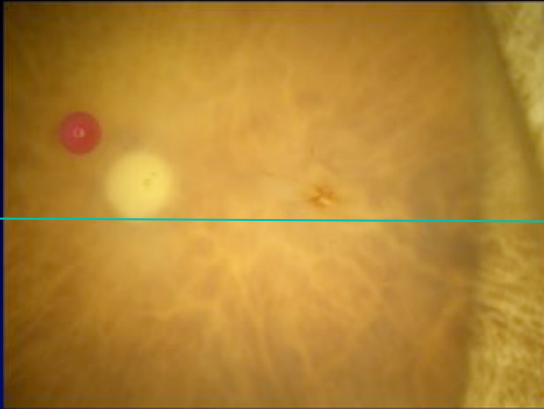
94, Caucasian female

Neovascular AMD

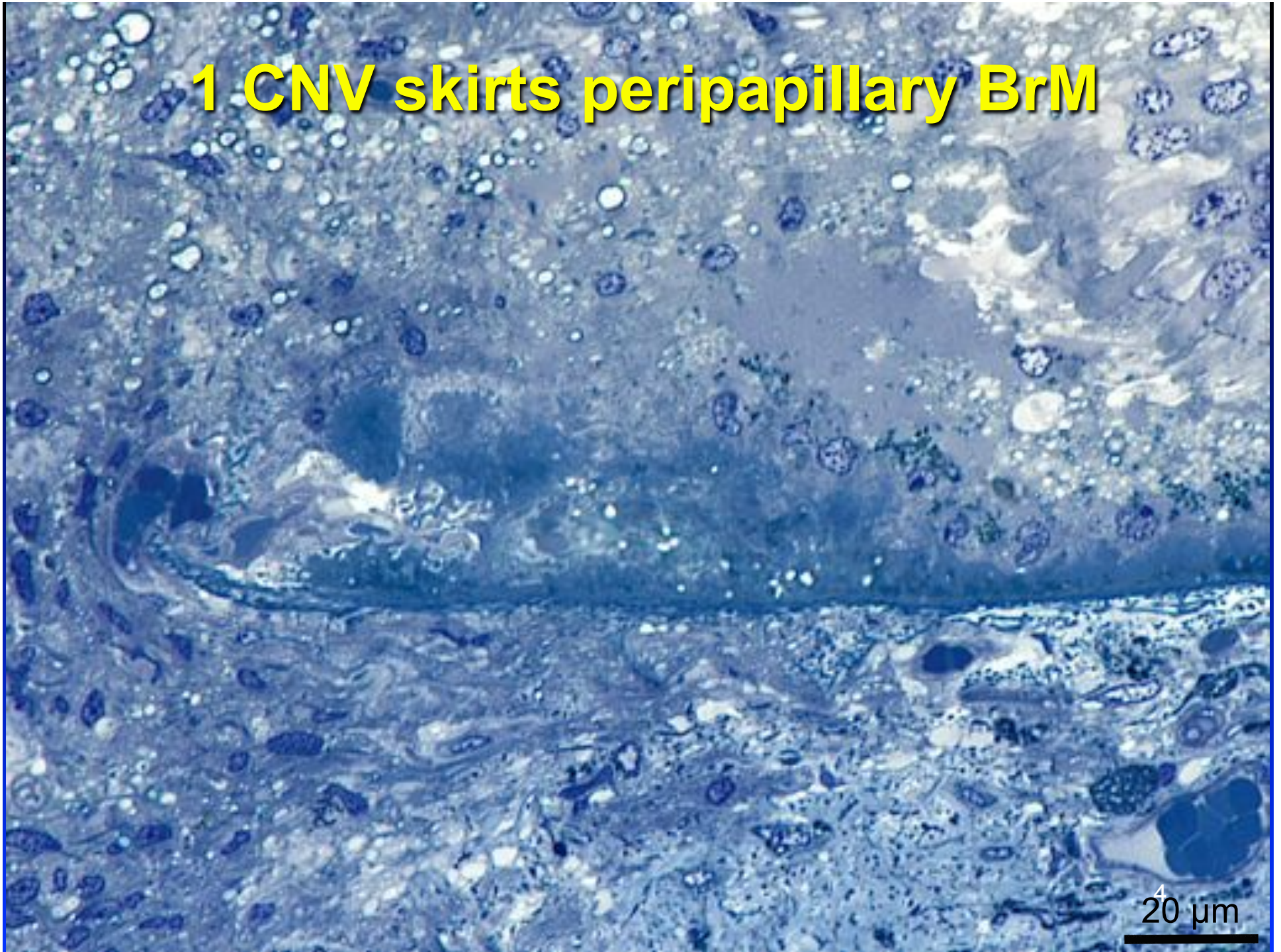
Shown as L



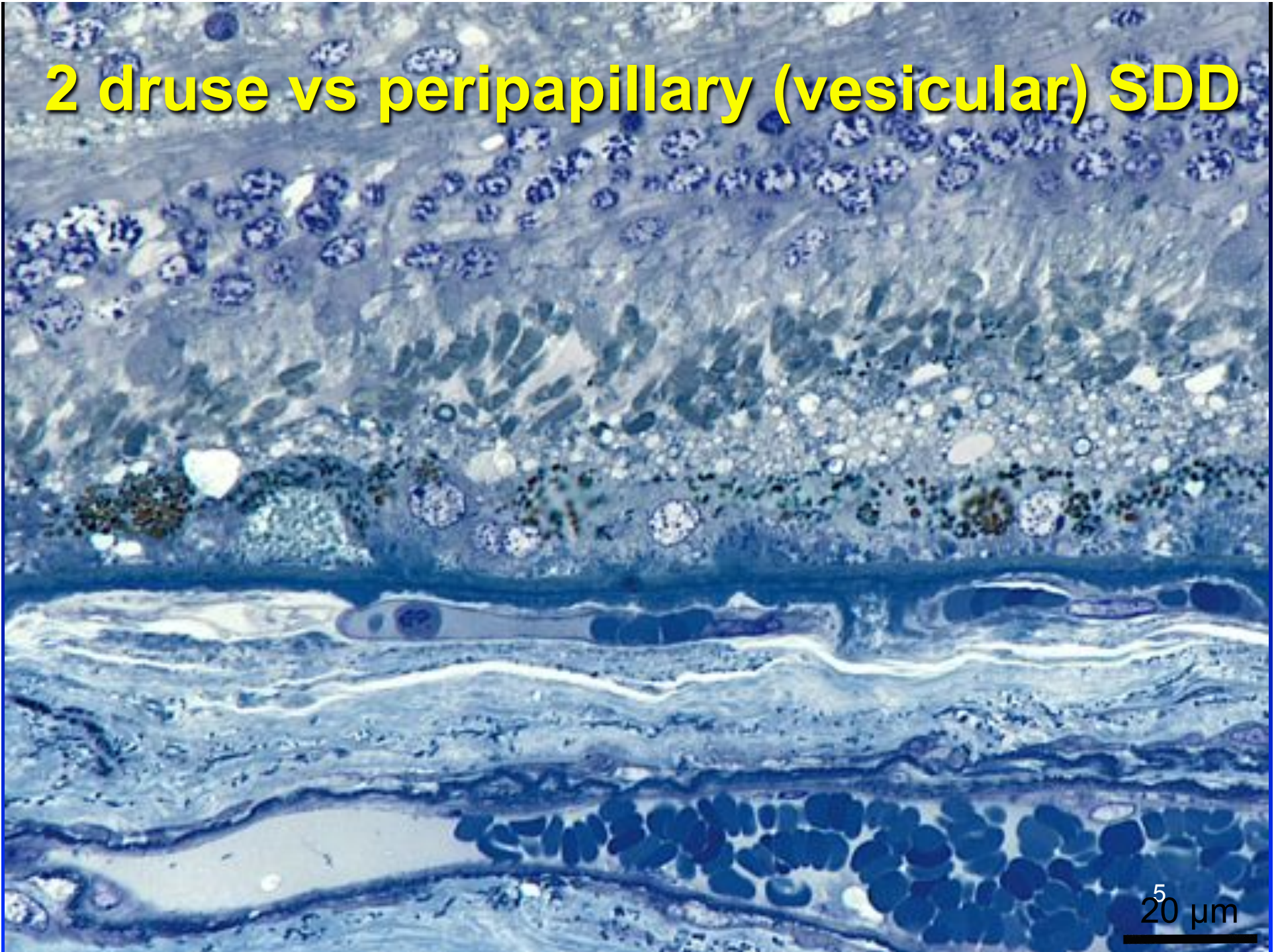
Foveal sections



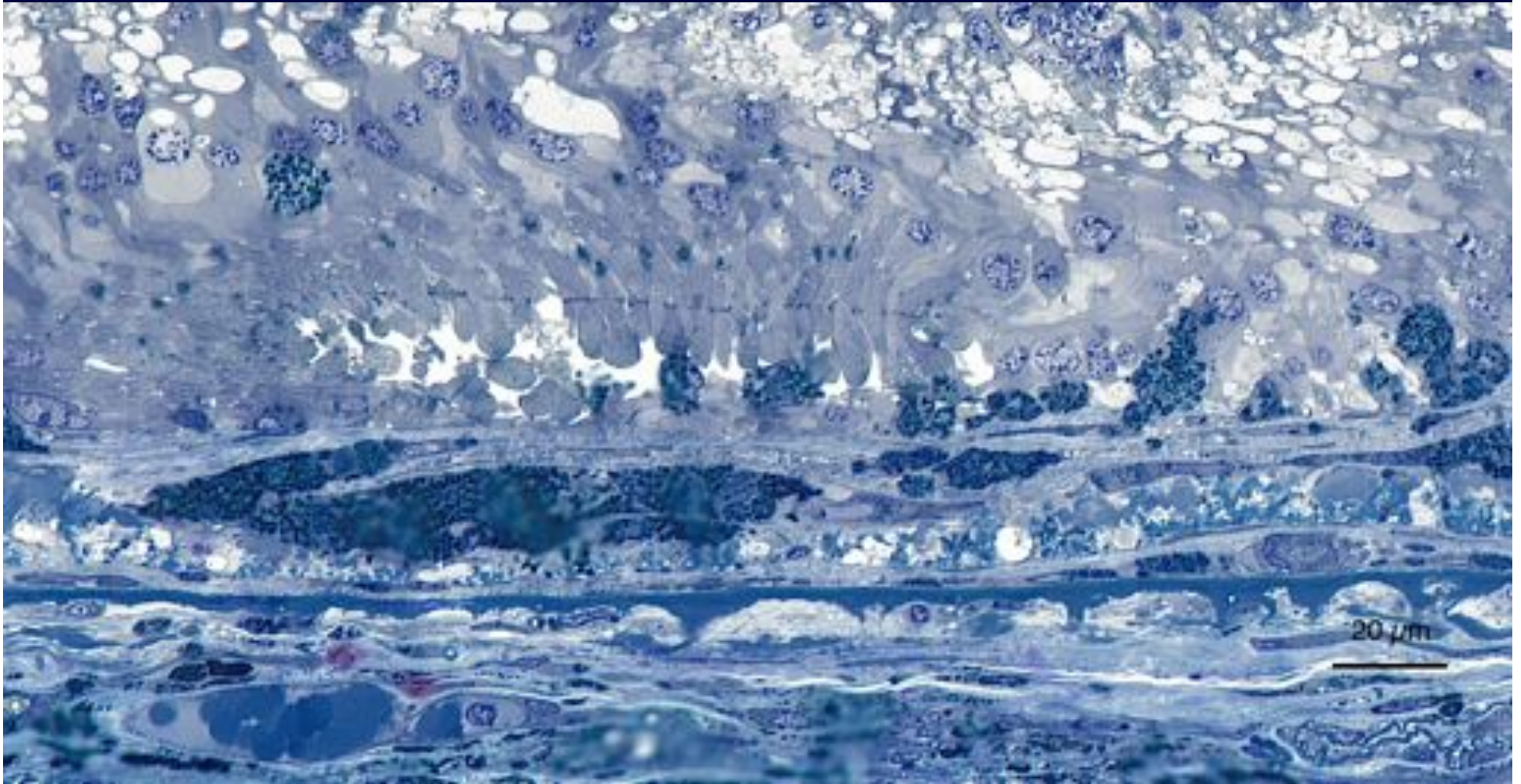
1 CNV skirts peripapillary BrM



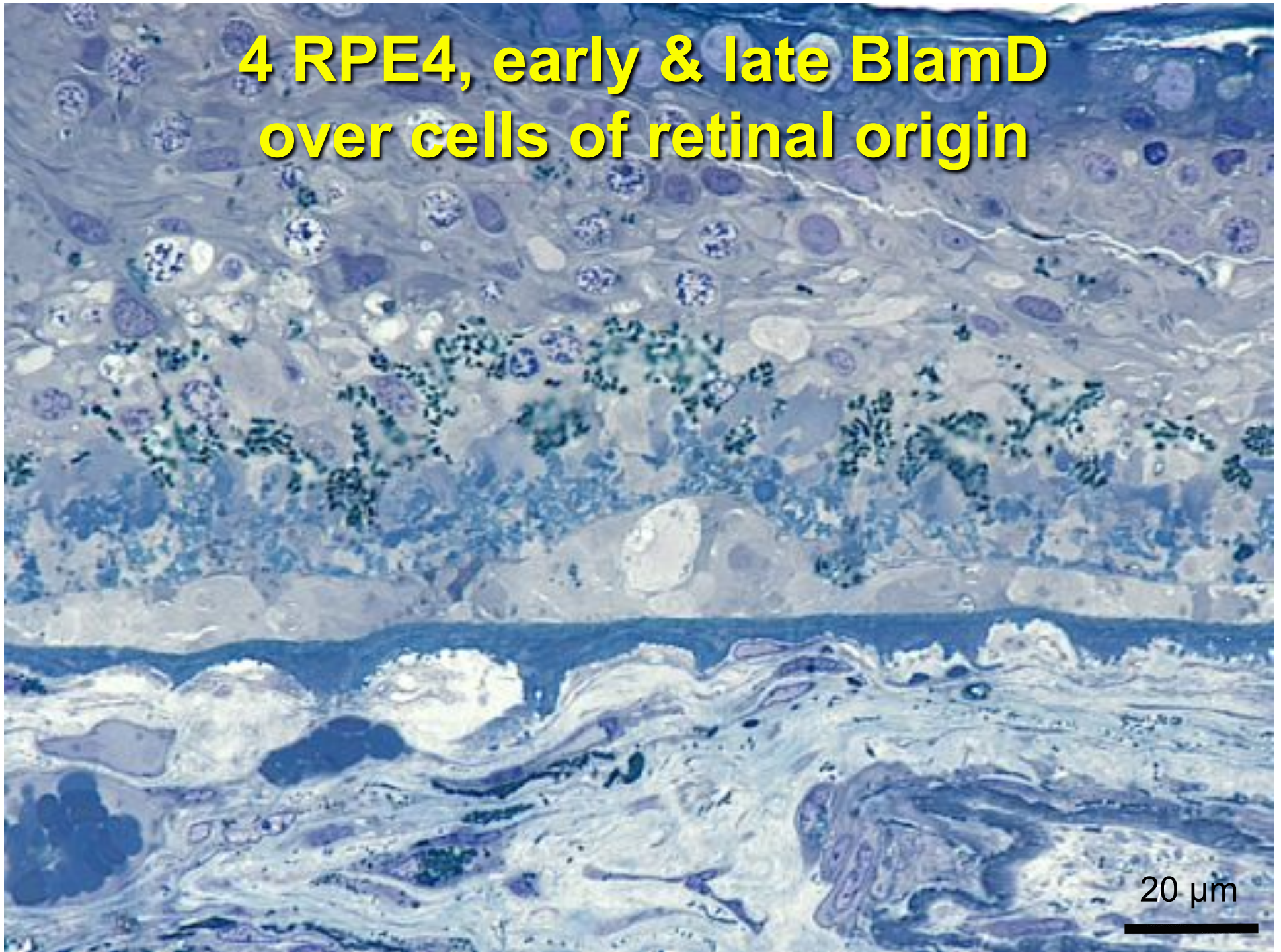
2 druse vs peripapillary (vesicular) SDD



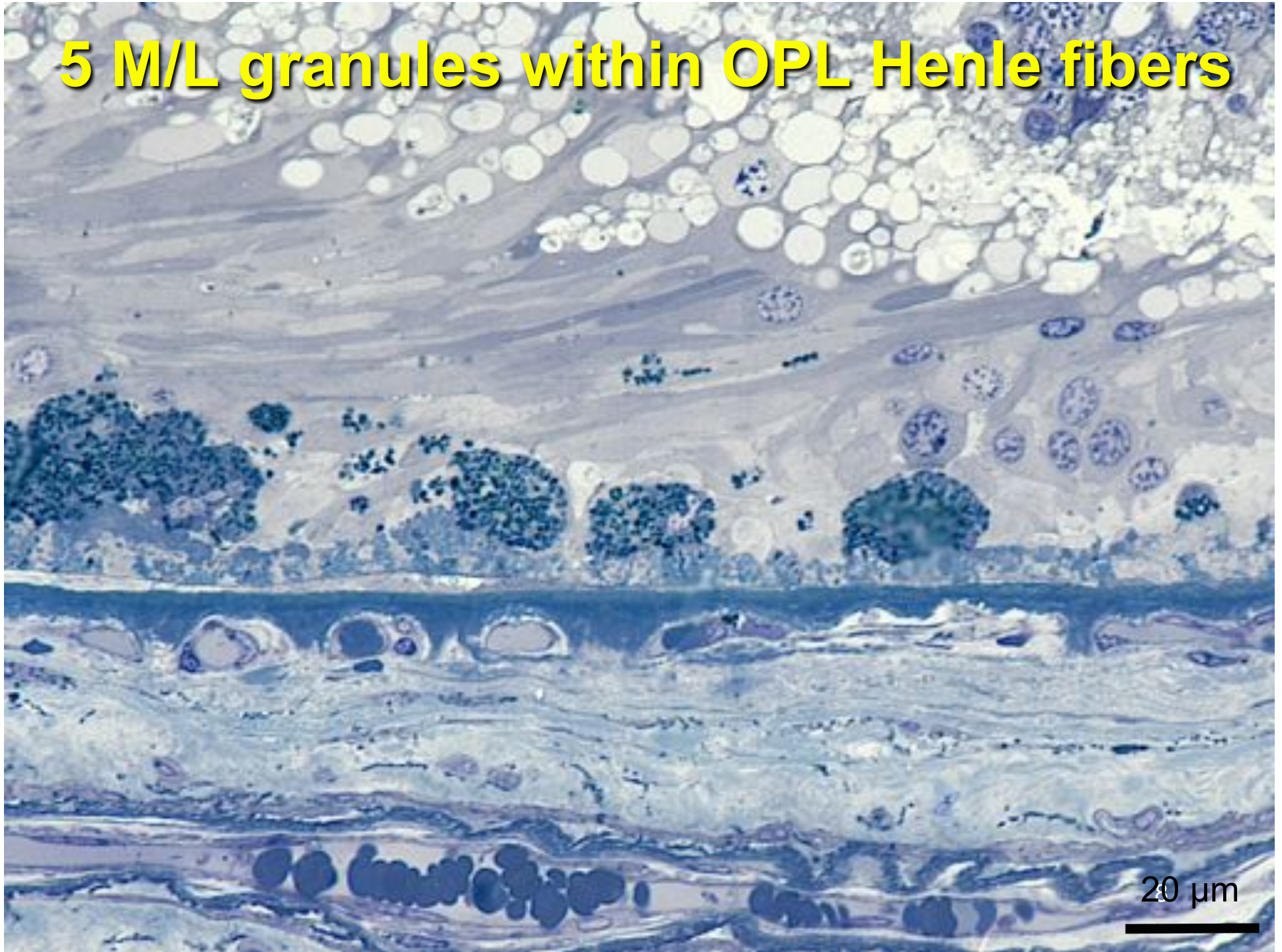
**3 island not an ORT; RPE 6;
retracted cone nuclei**



**4 RPE4, early & late BlamD
over cells of retinal origin**



5 M/L granules within OPL Henle fibers

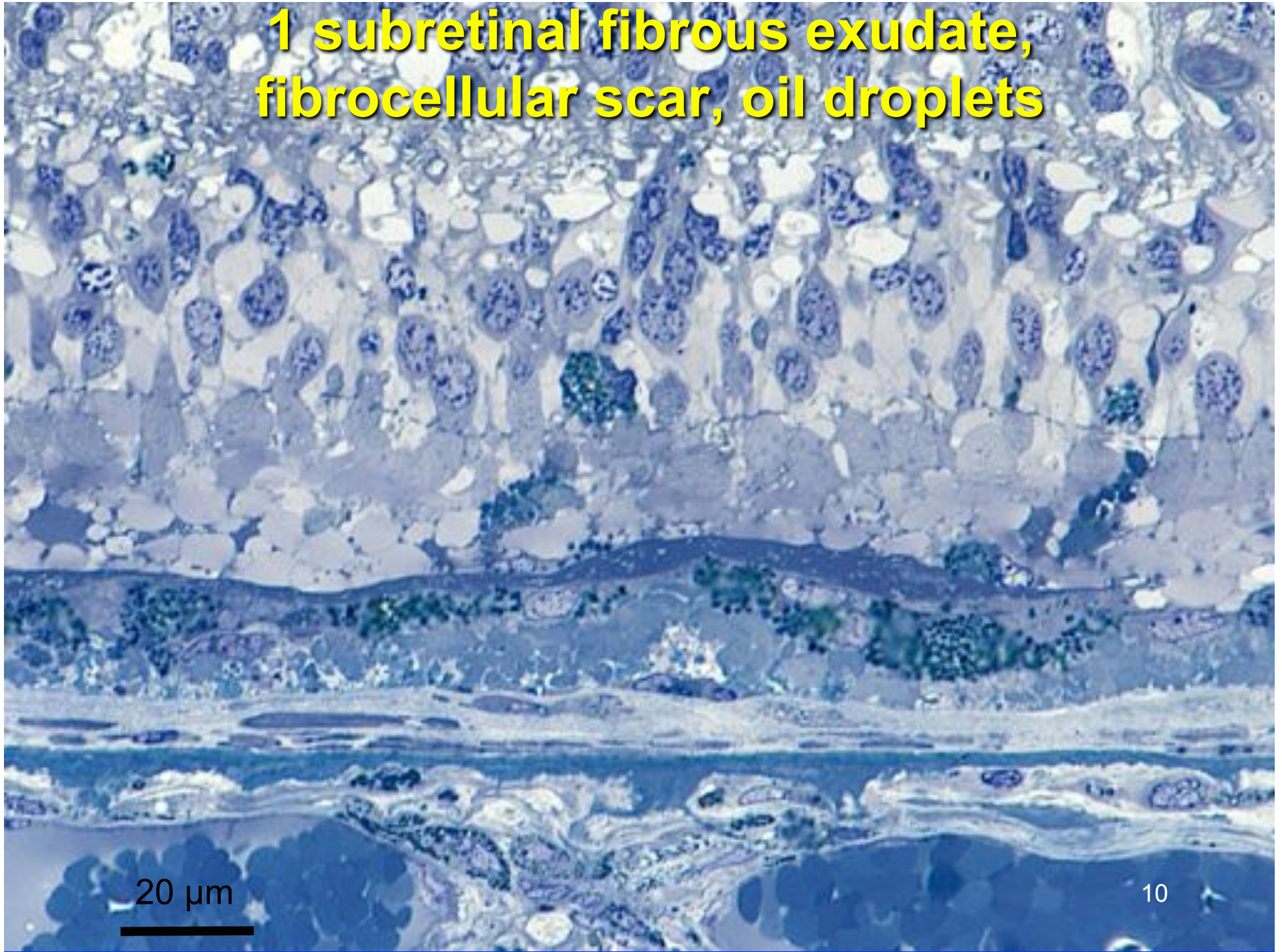




Perifoveal sections

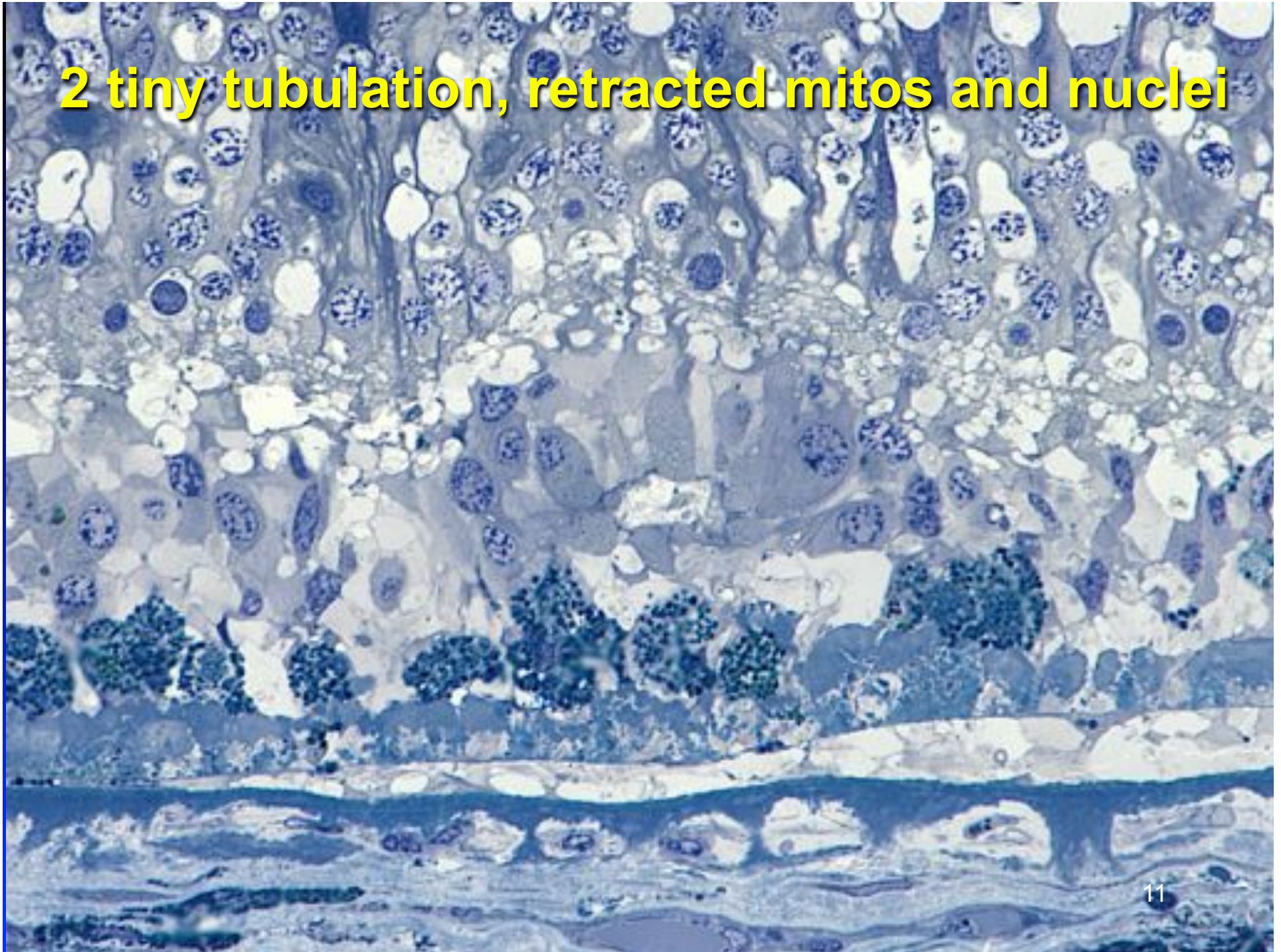


**1 subretinal fibrous exudate,
fibrocellular scar, oil droplets**

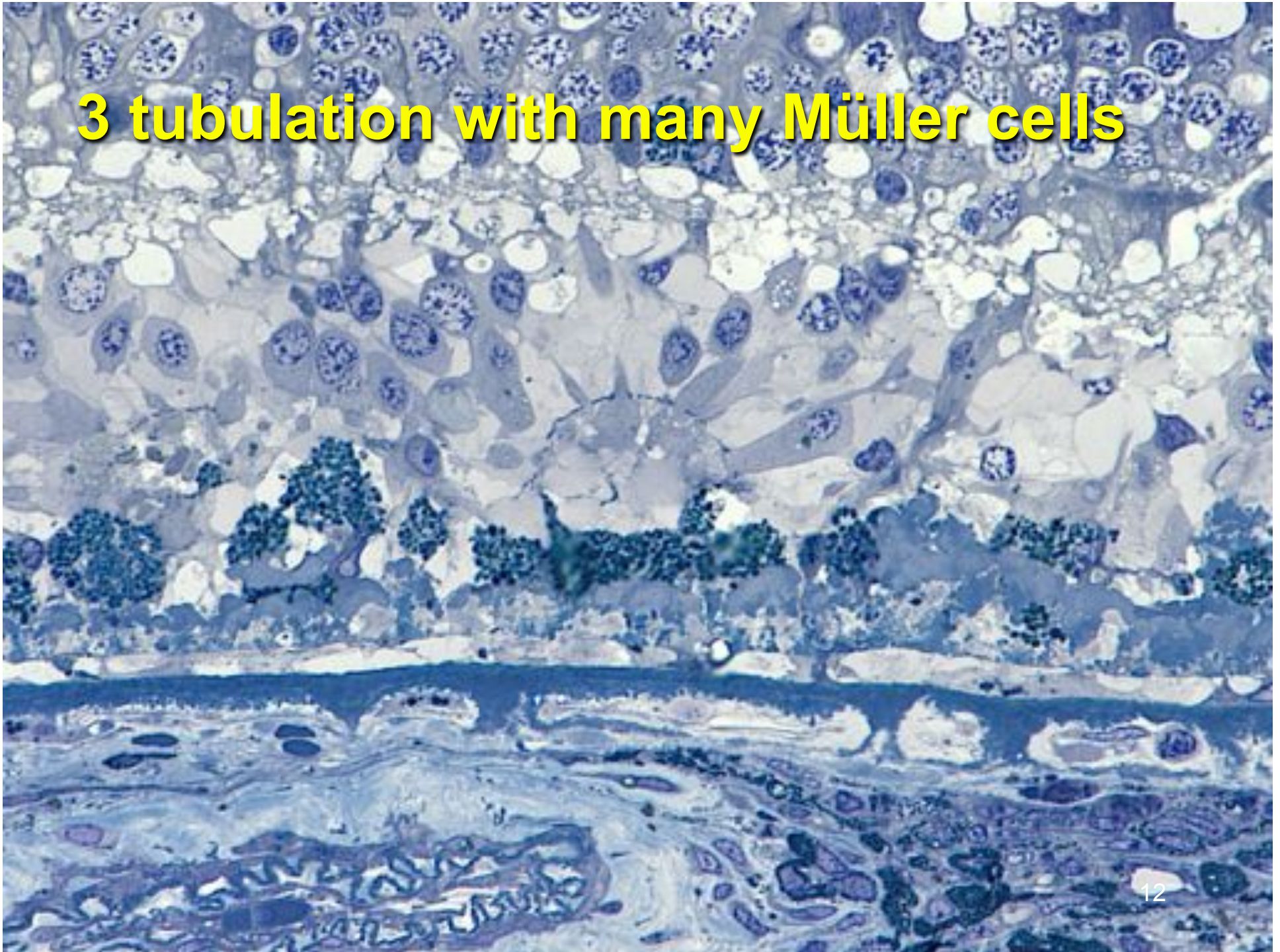


20 μ m

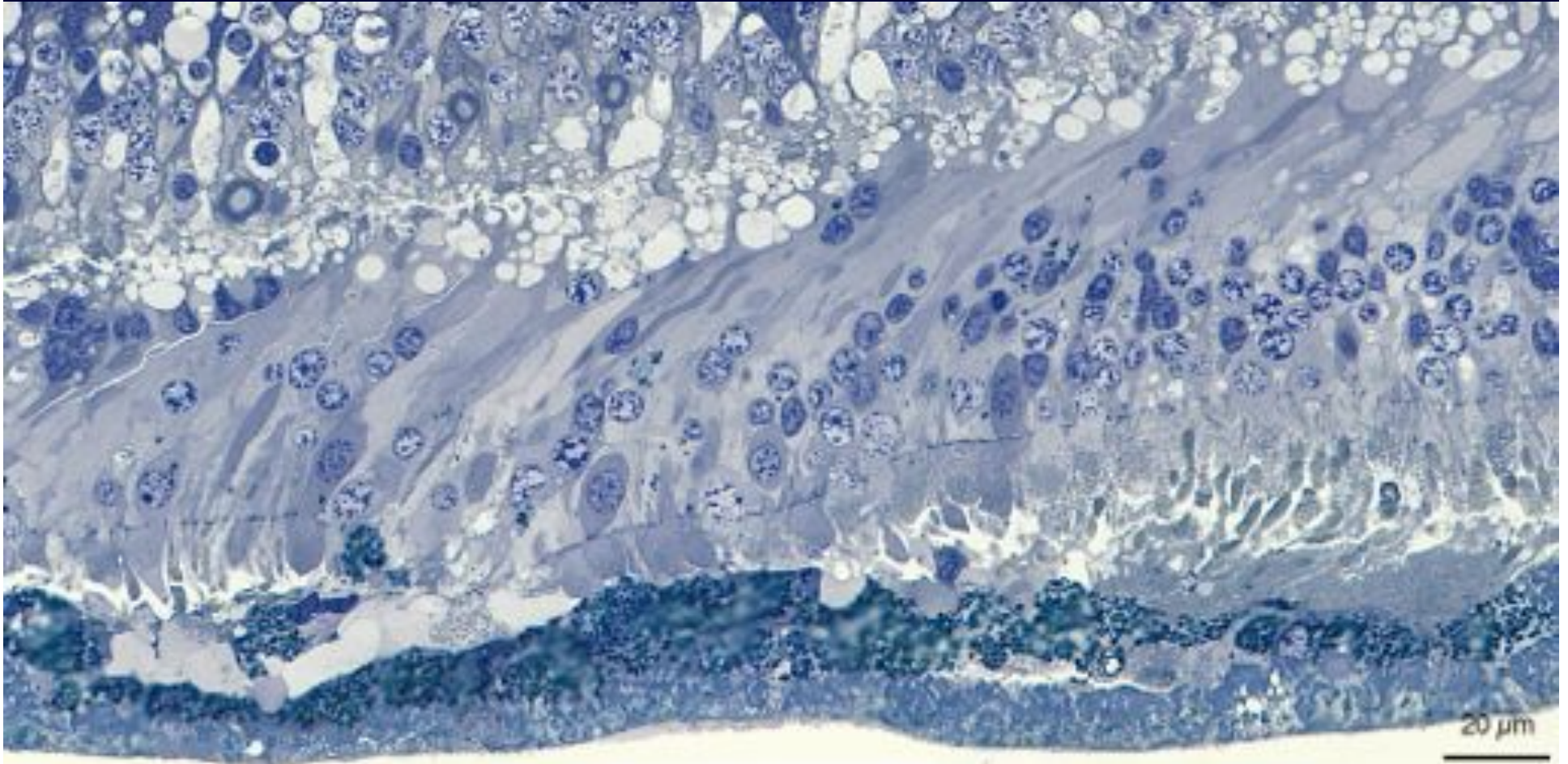
2 tiny tubulation, retracted mitos and nuclei



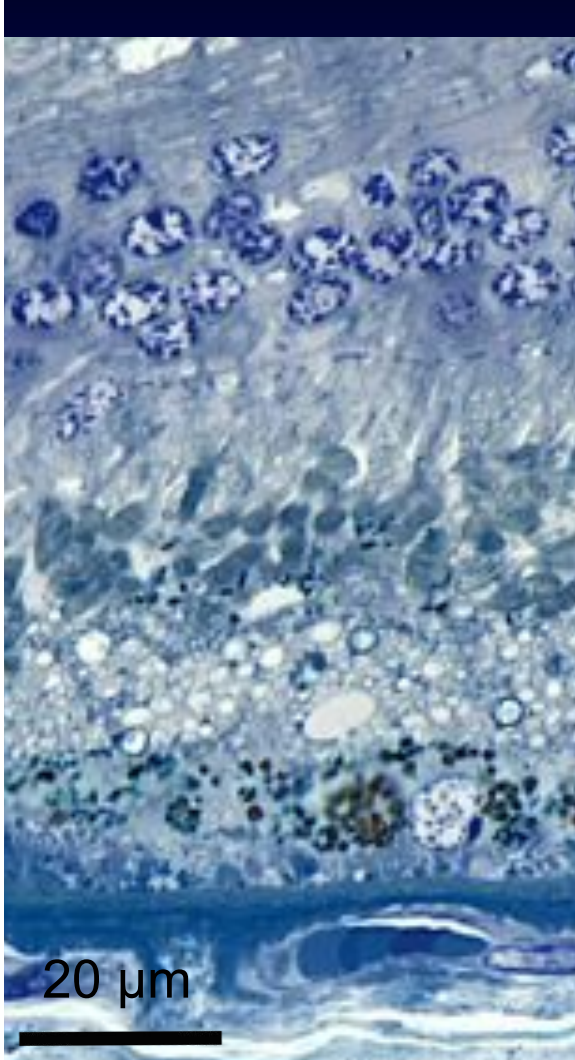
3 tubulation with many Müller cells



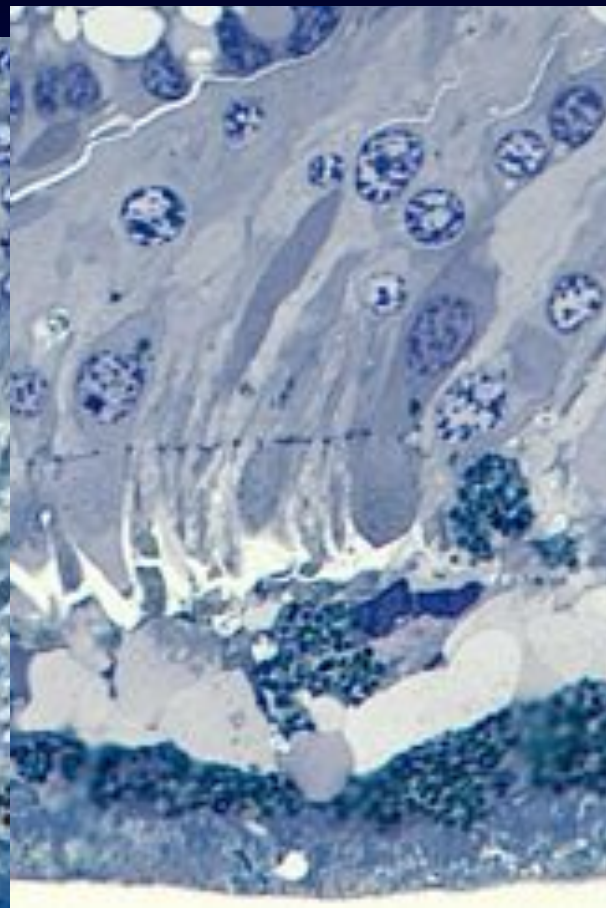
4 SDD transitions



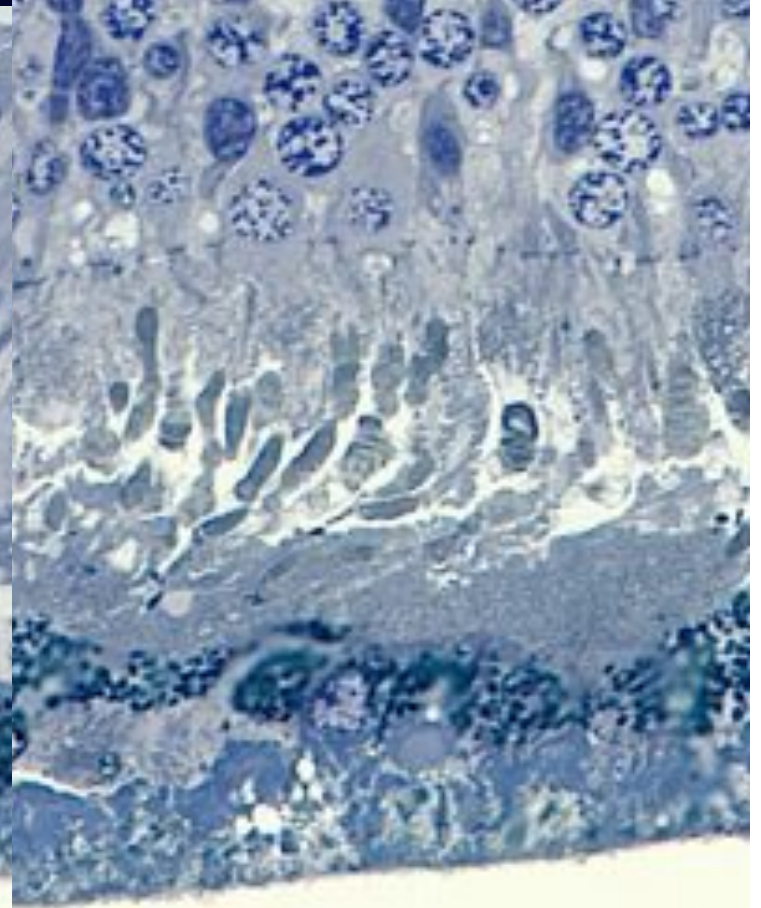
Three SDD types



Parapapillary



???????



Conventional

Project MACULA Case Report

Christine A. Curcio, PhD

