

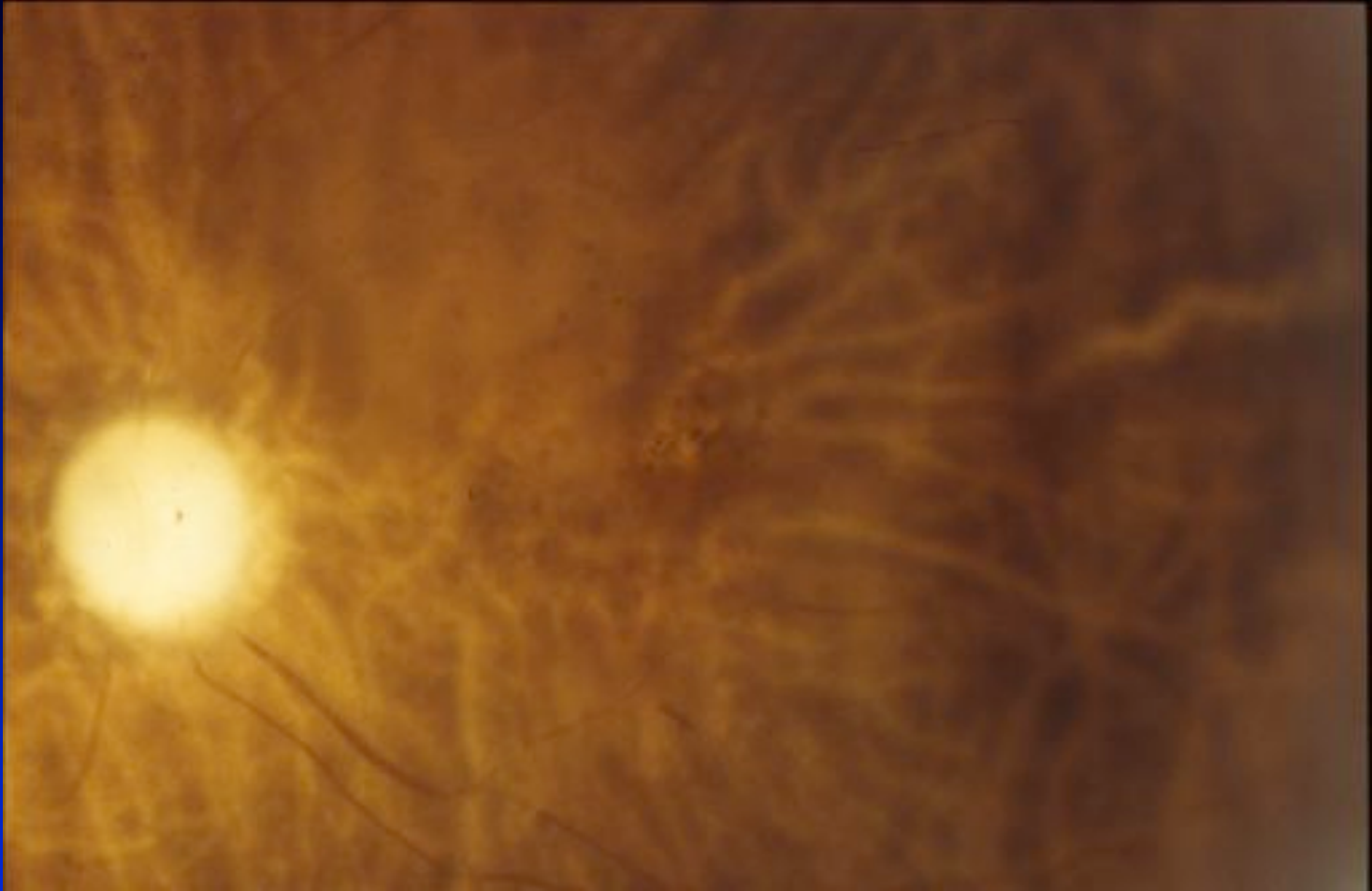
# Project MACULA Case Report

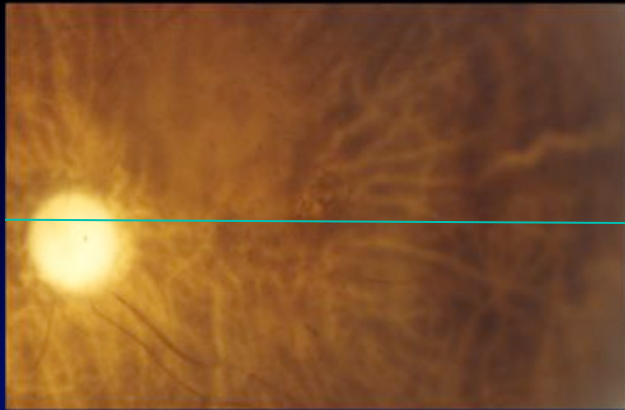
2002088R

85, Caucasian female

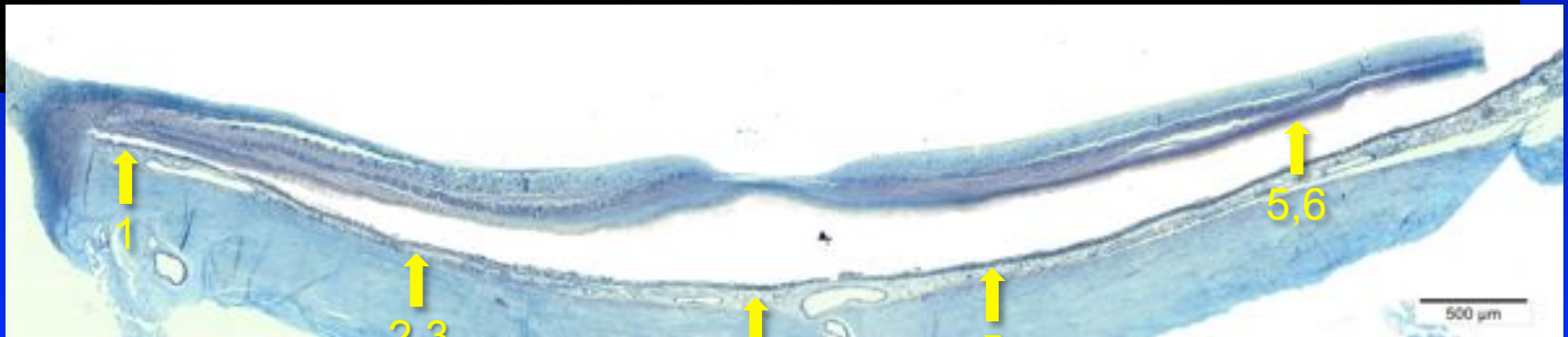
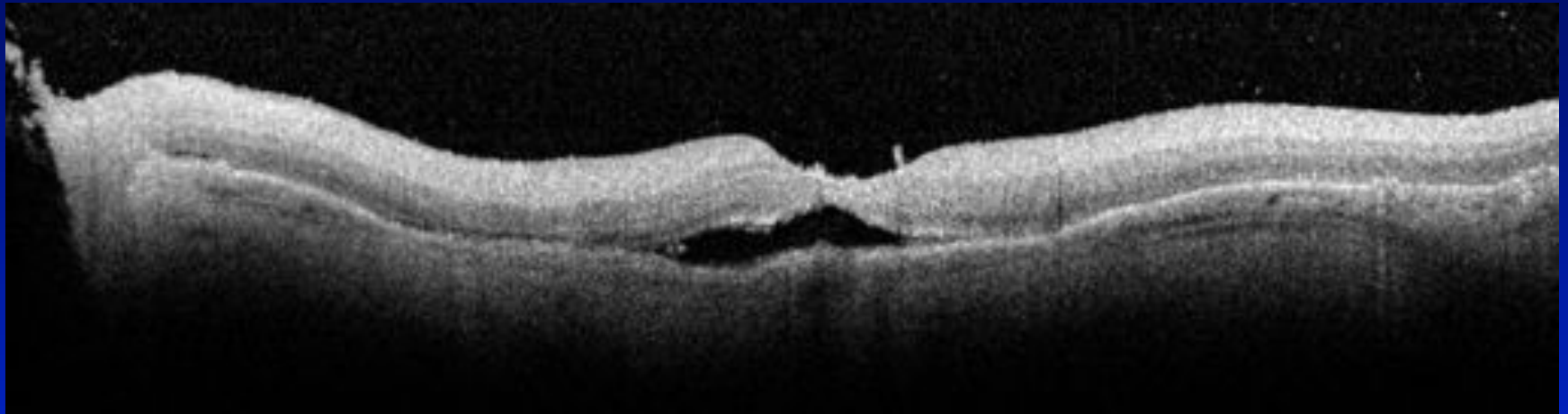
Neovascular AMD

Shown as L

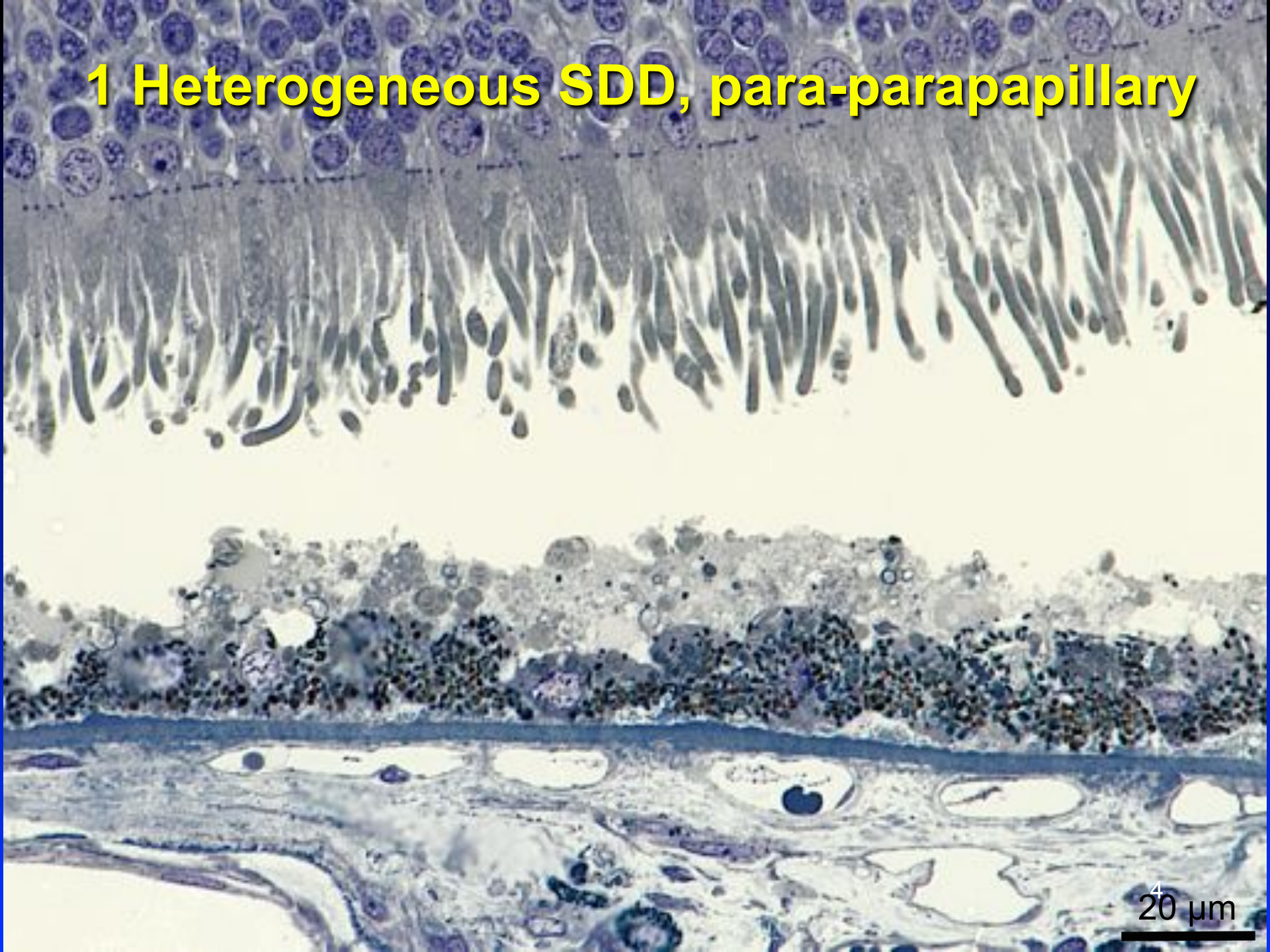




# Foveal sections

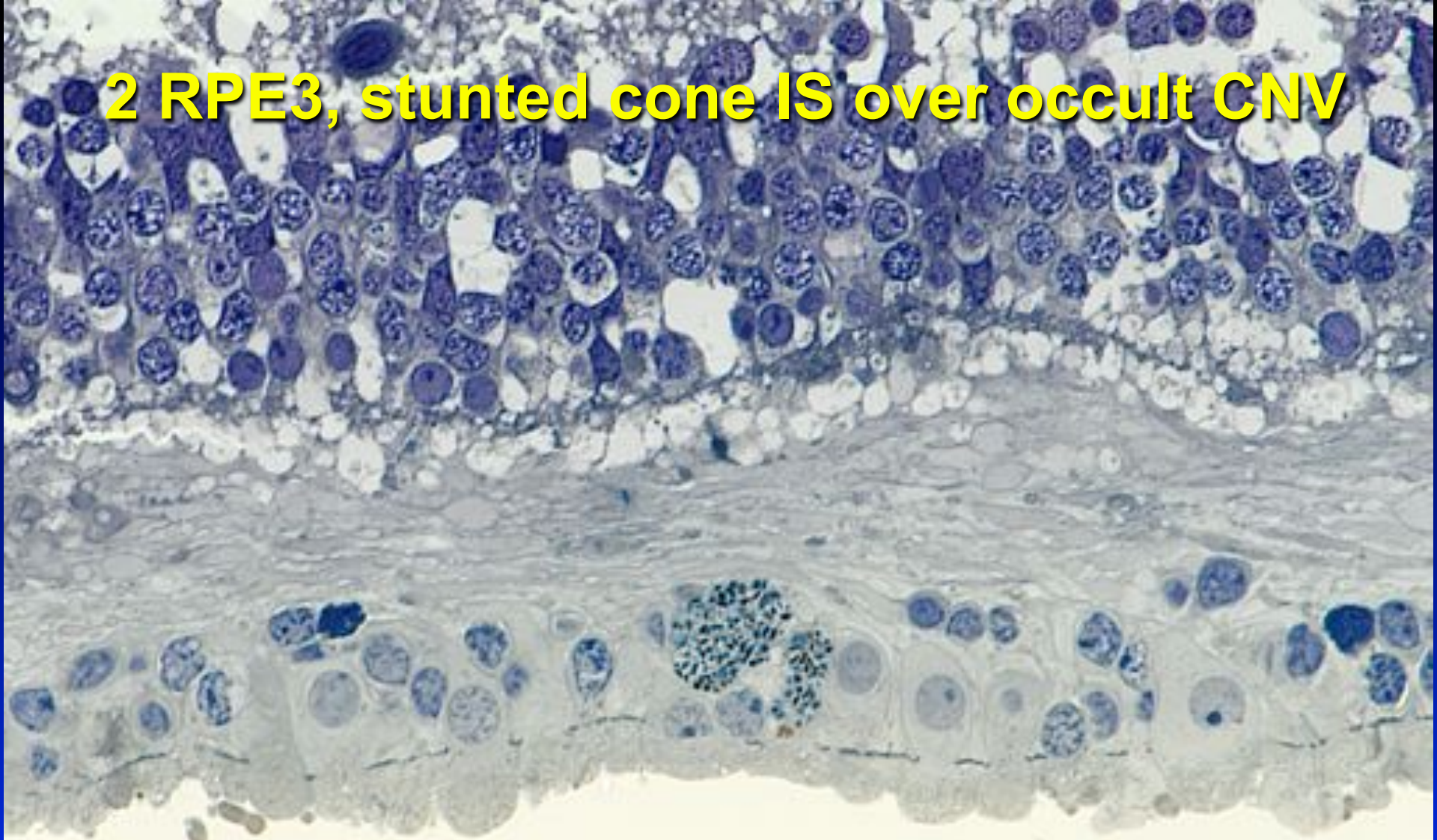


# 1 Heterogeneous SDD, para-parapapillary



20  $\mu$ m

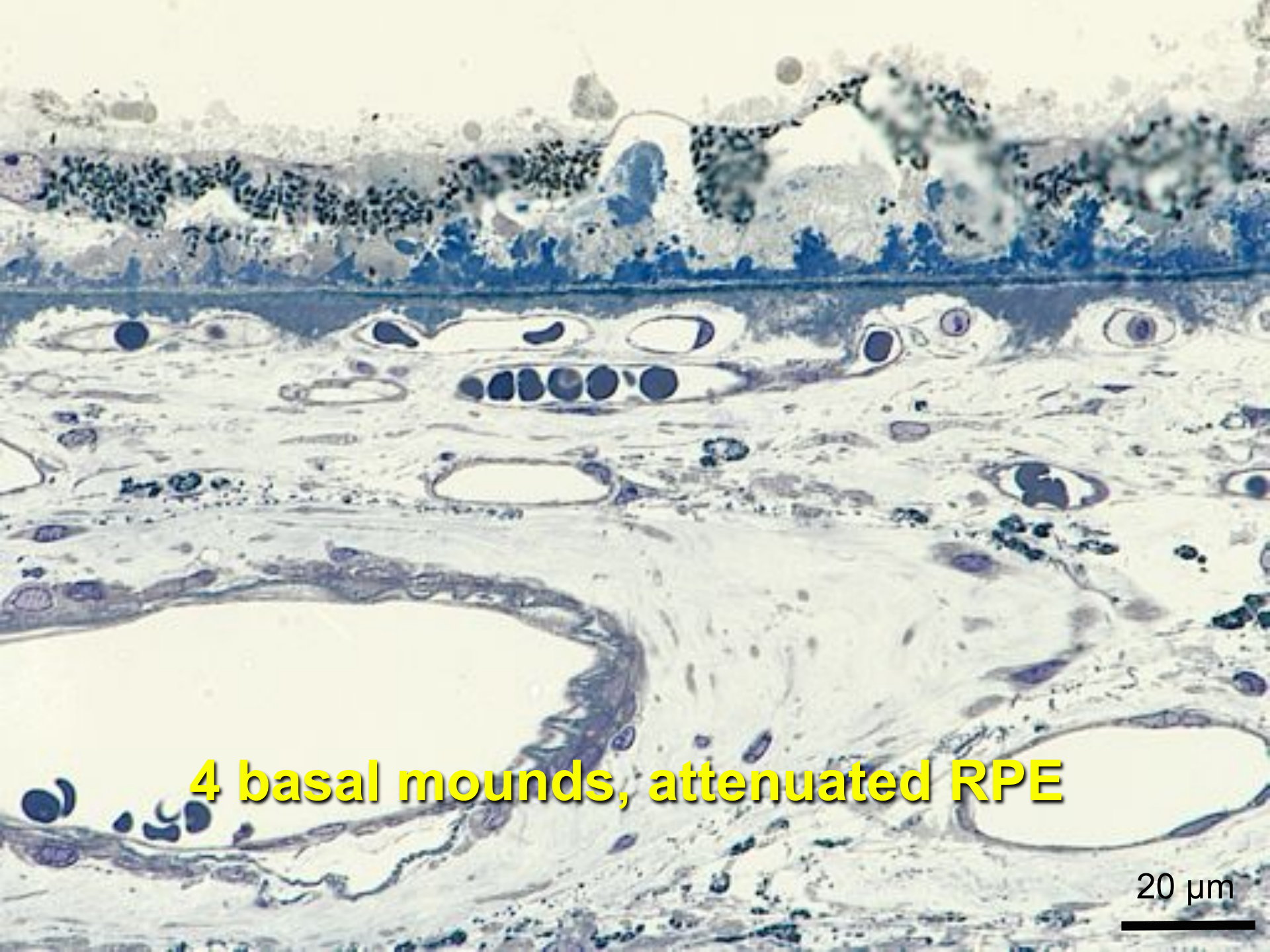
**2 RPE3, stunted cone IS over occult CNV**



20  $\mu$ m

# 3 occult sub-RPE neovascularization



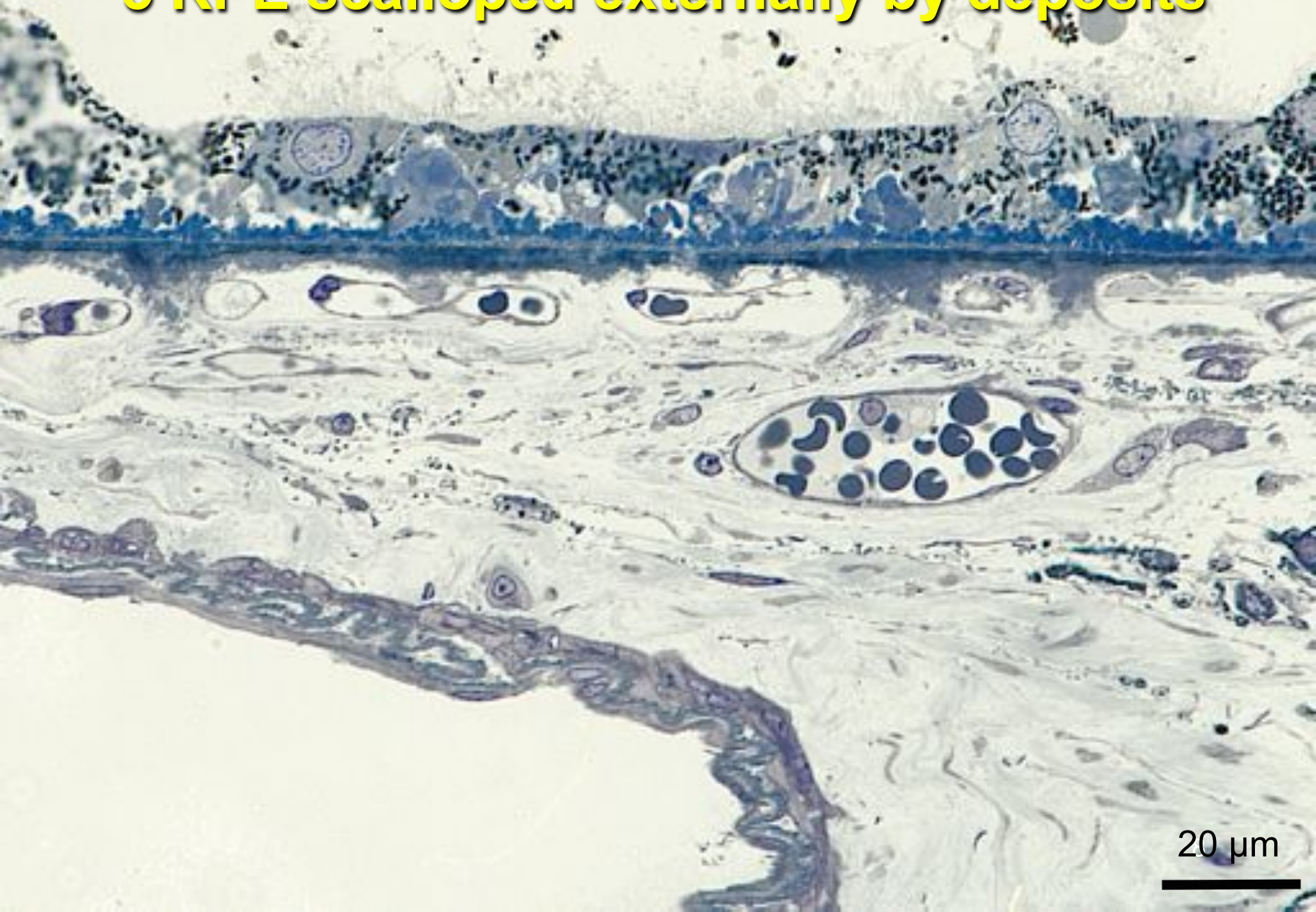


**4 basal mounds, attenuated RPE**

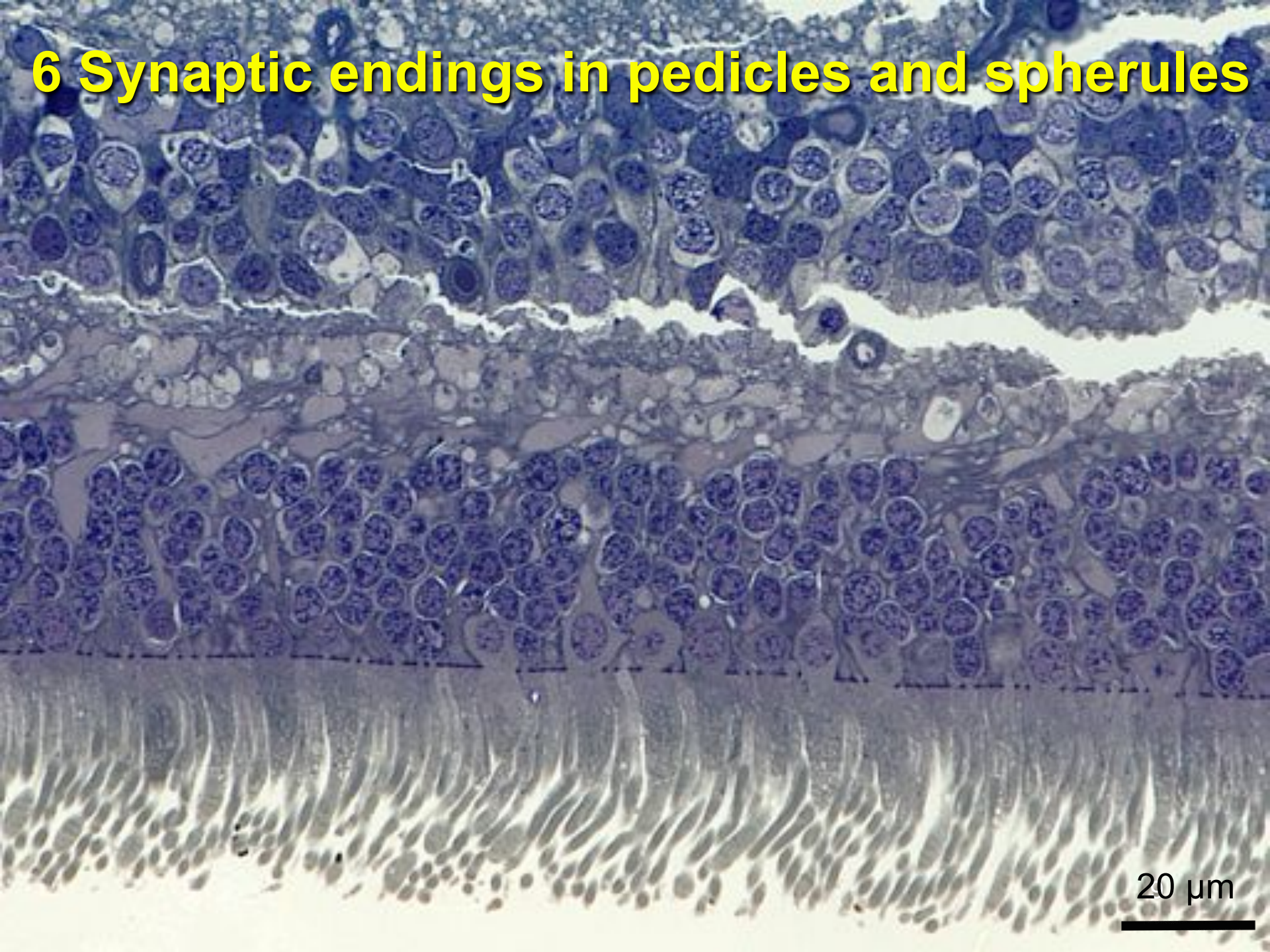
20  $\mu$ m



# 5 RPE scalloped externally by deposits

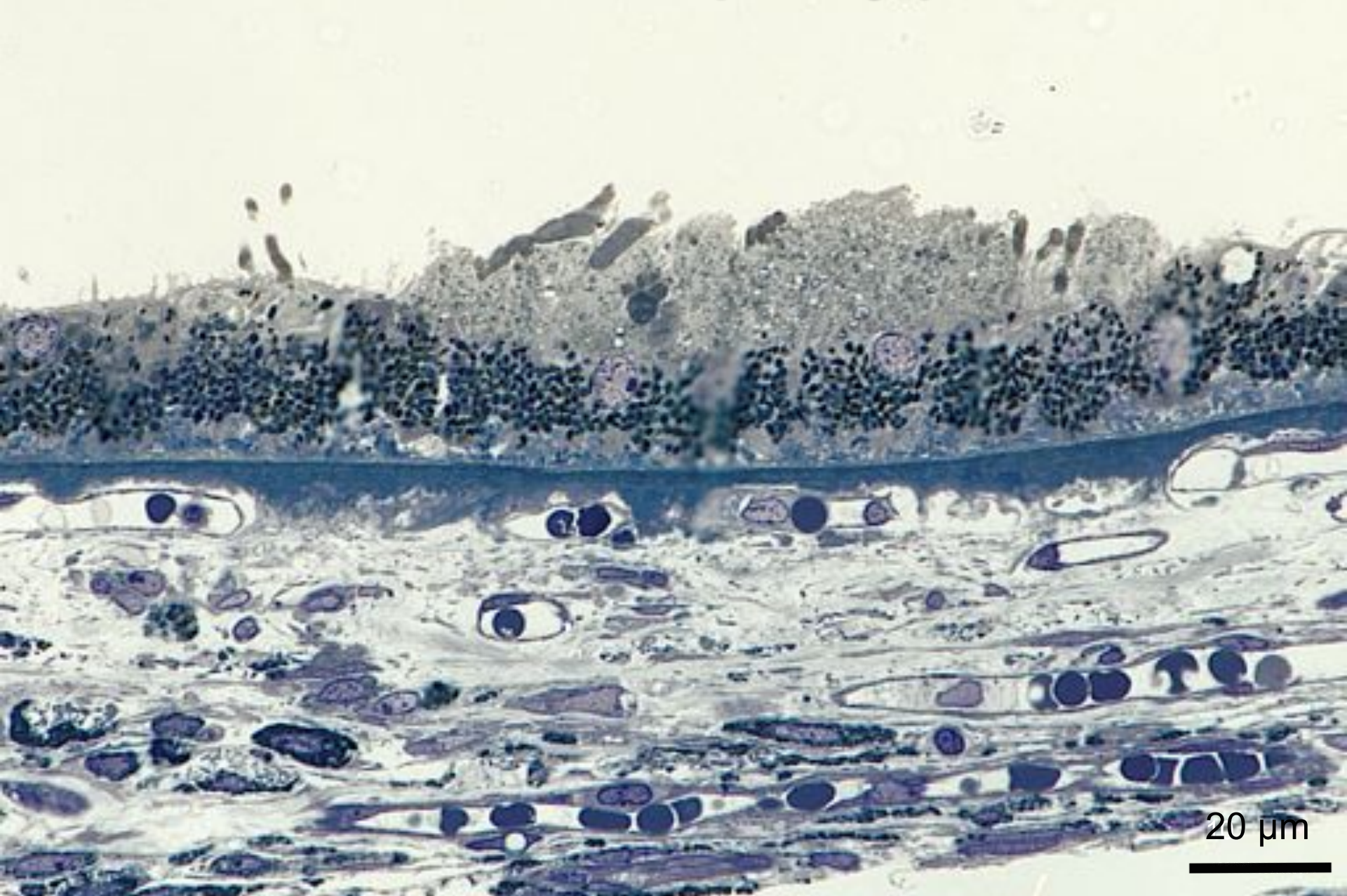


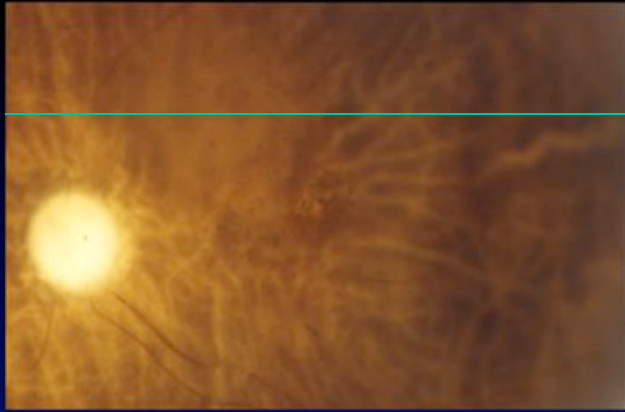
# 6 Synaptic endings in pedicles and spherules



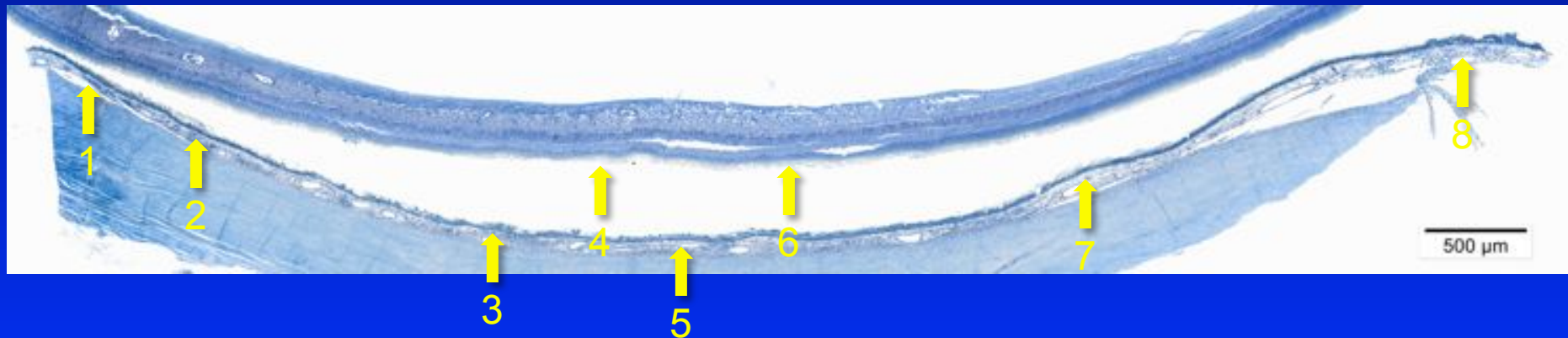
20  $\mu\text{m}$

# 7 SDD over RPE with apically placed nuclei





# Perifoveal sections

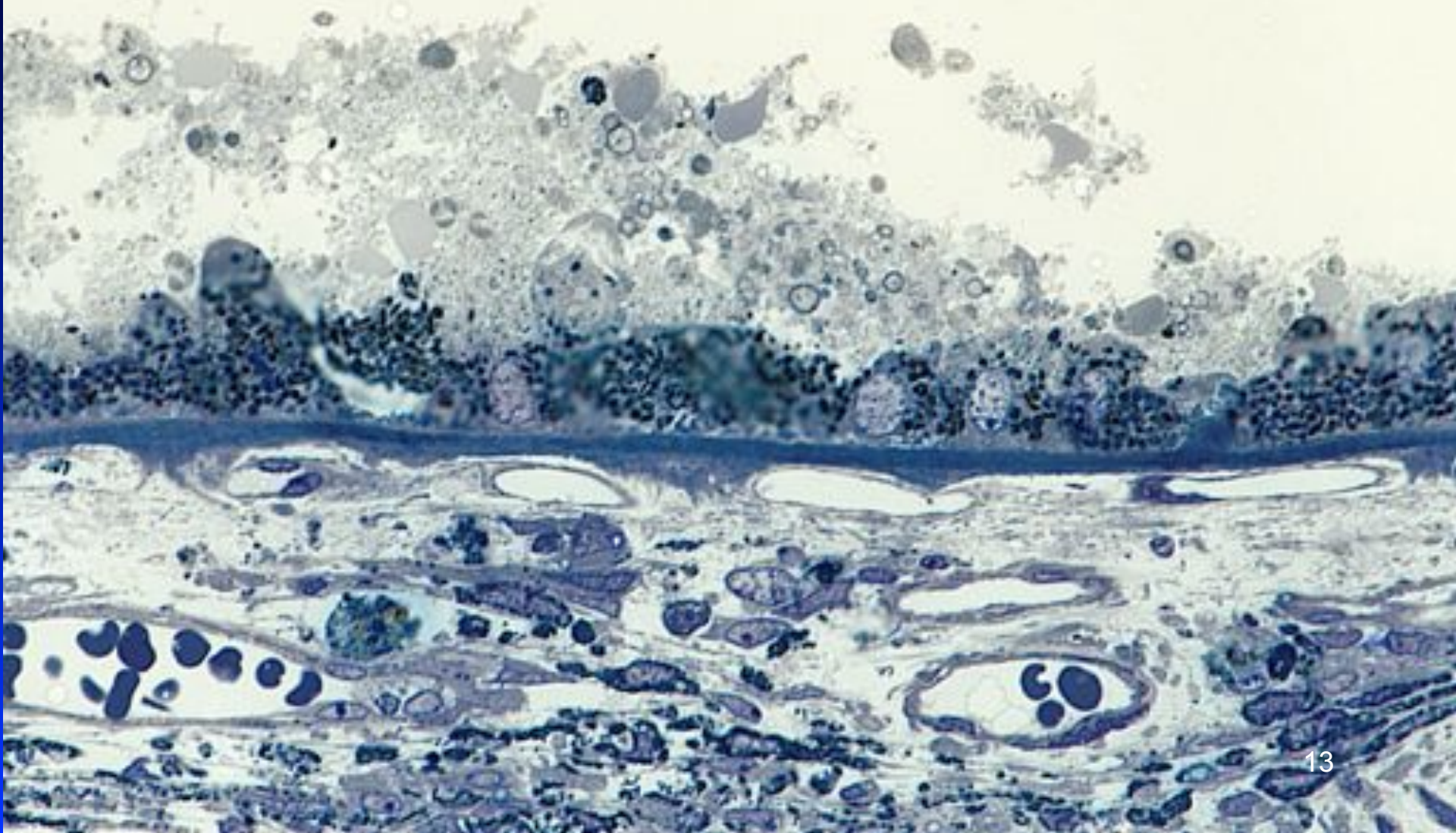


# 1 Shed cone IS near SDD, para-papillary

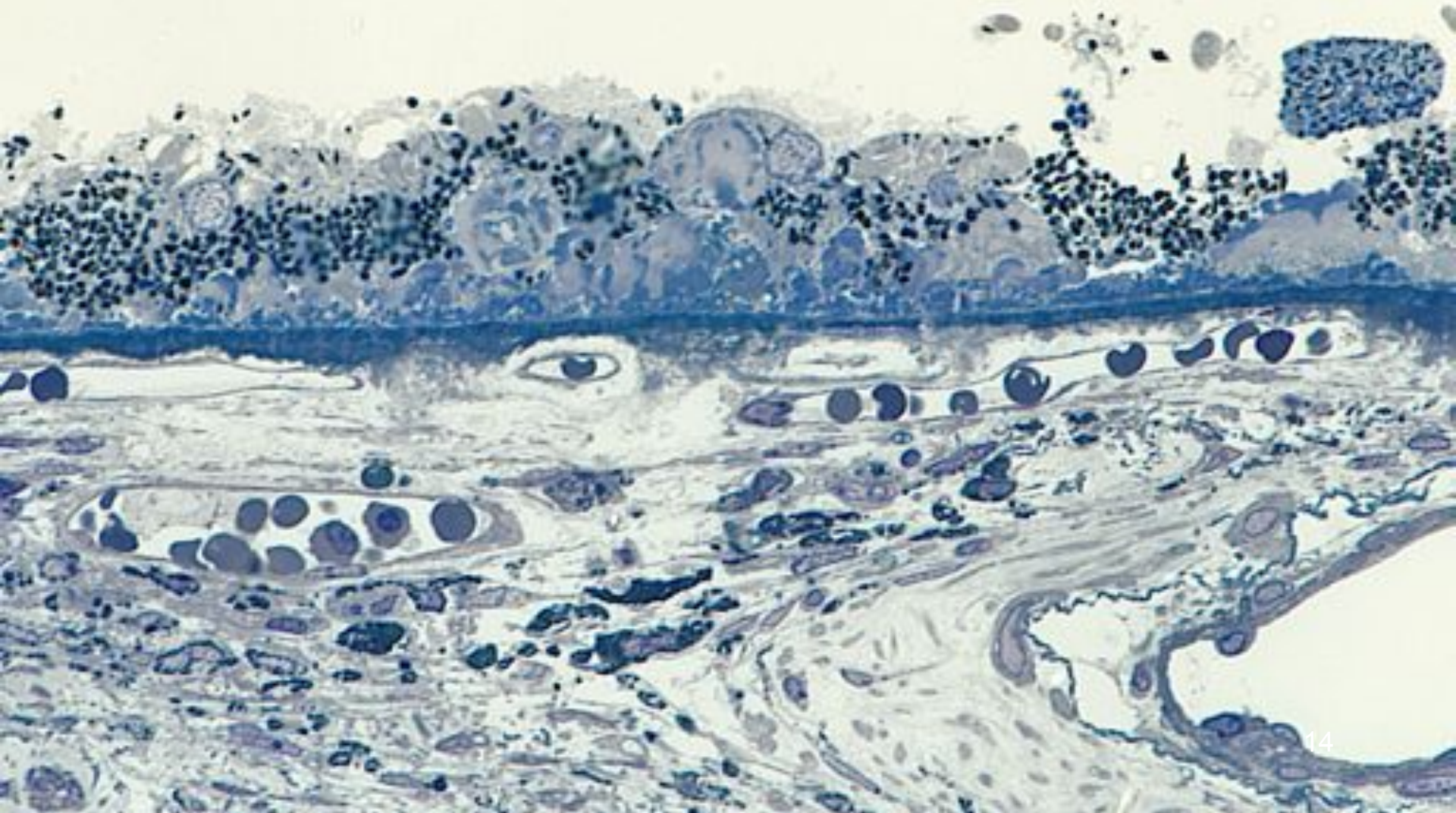


20  $\mu\text{m}$

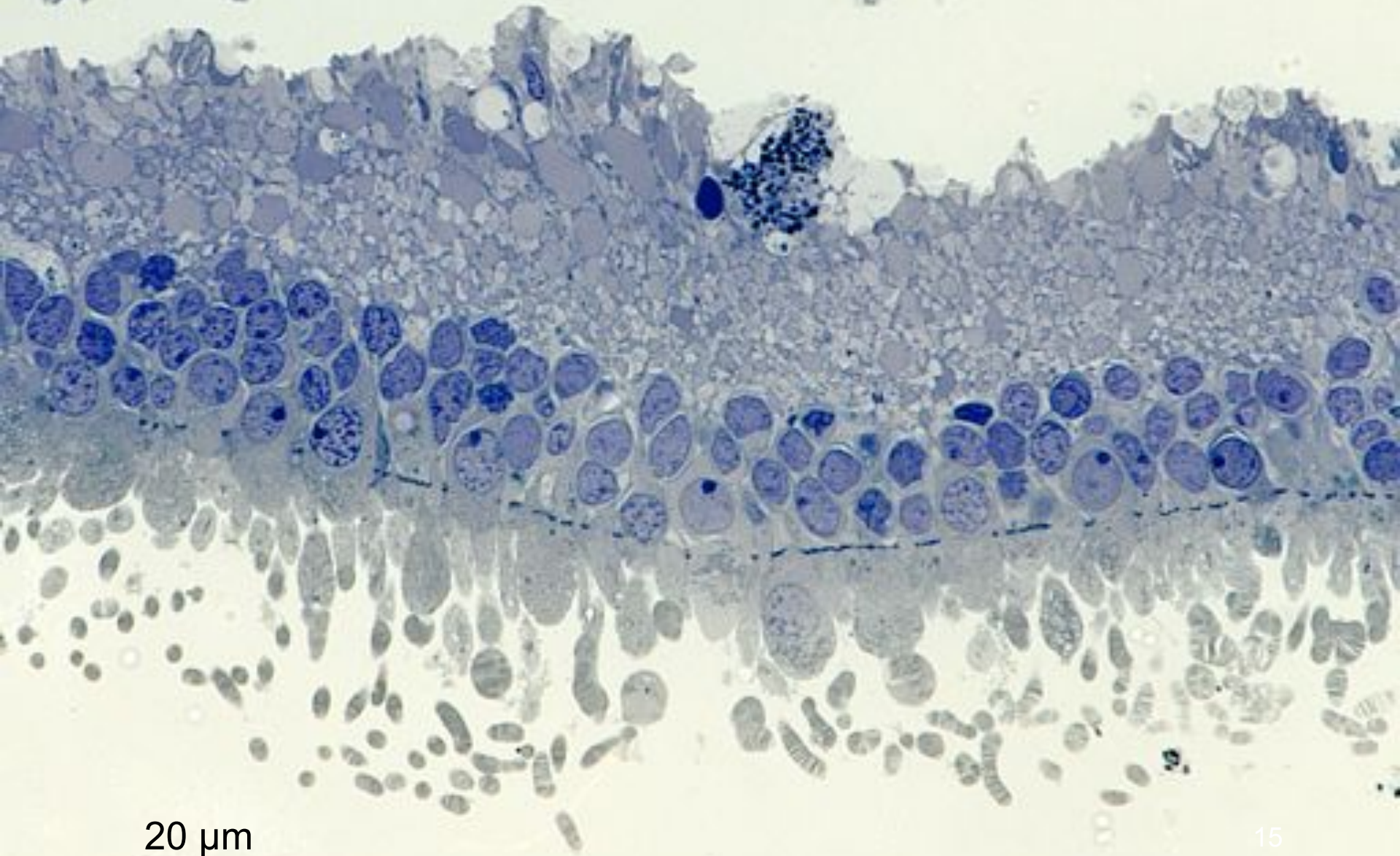
# 2 SDD - granular contents, amyloid-like rings



# 3 sculpted basal mounds

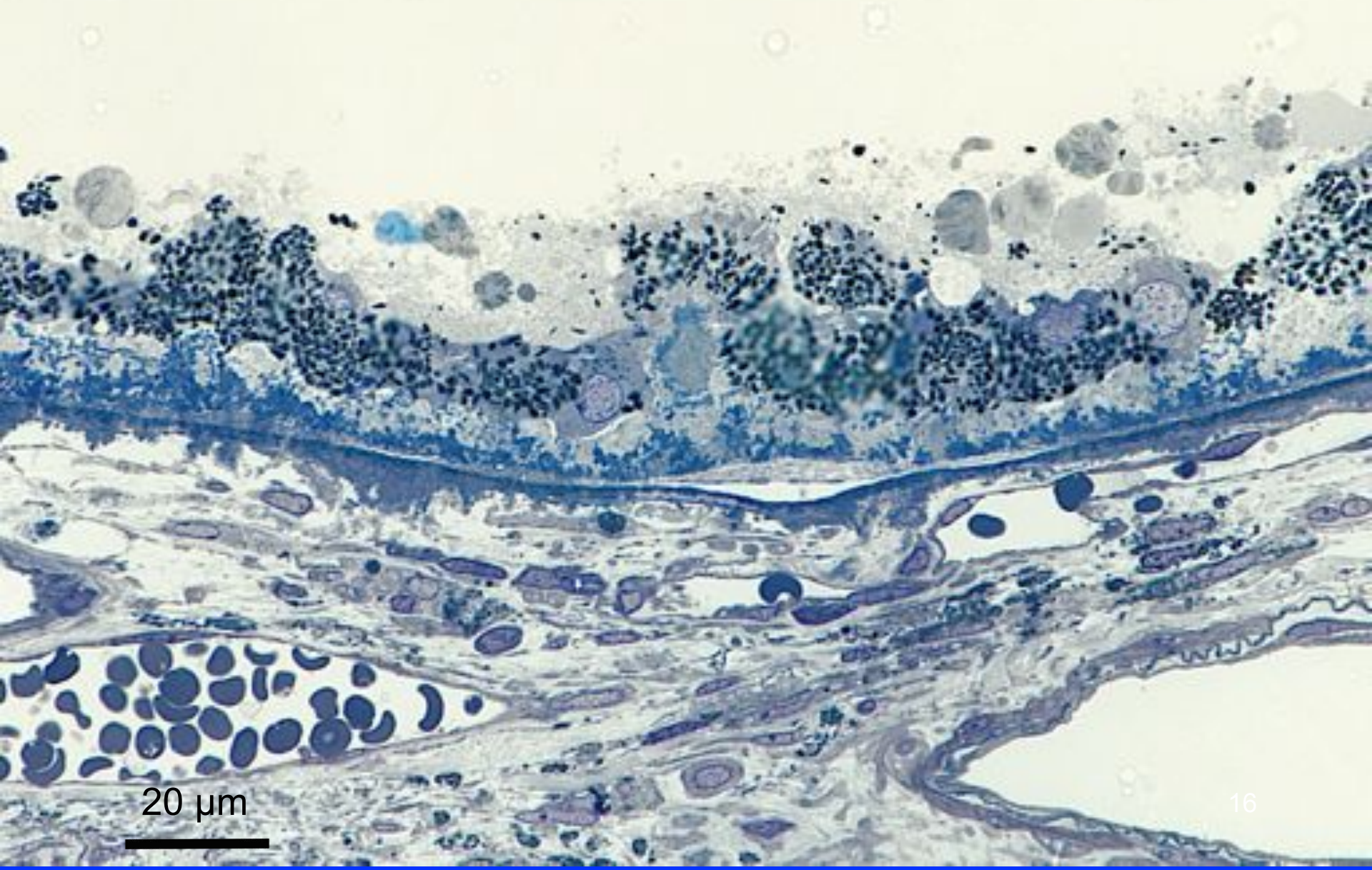


# 4 RPE3 in HFL, cones with dispersed mito



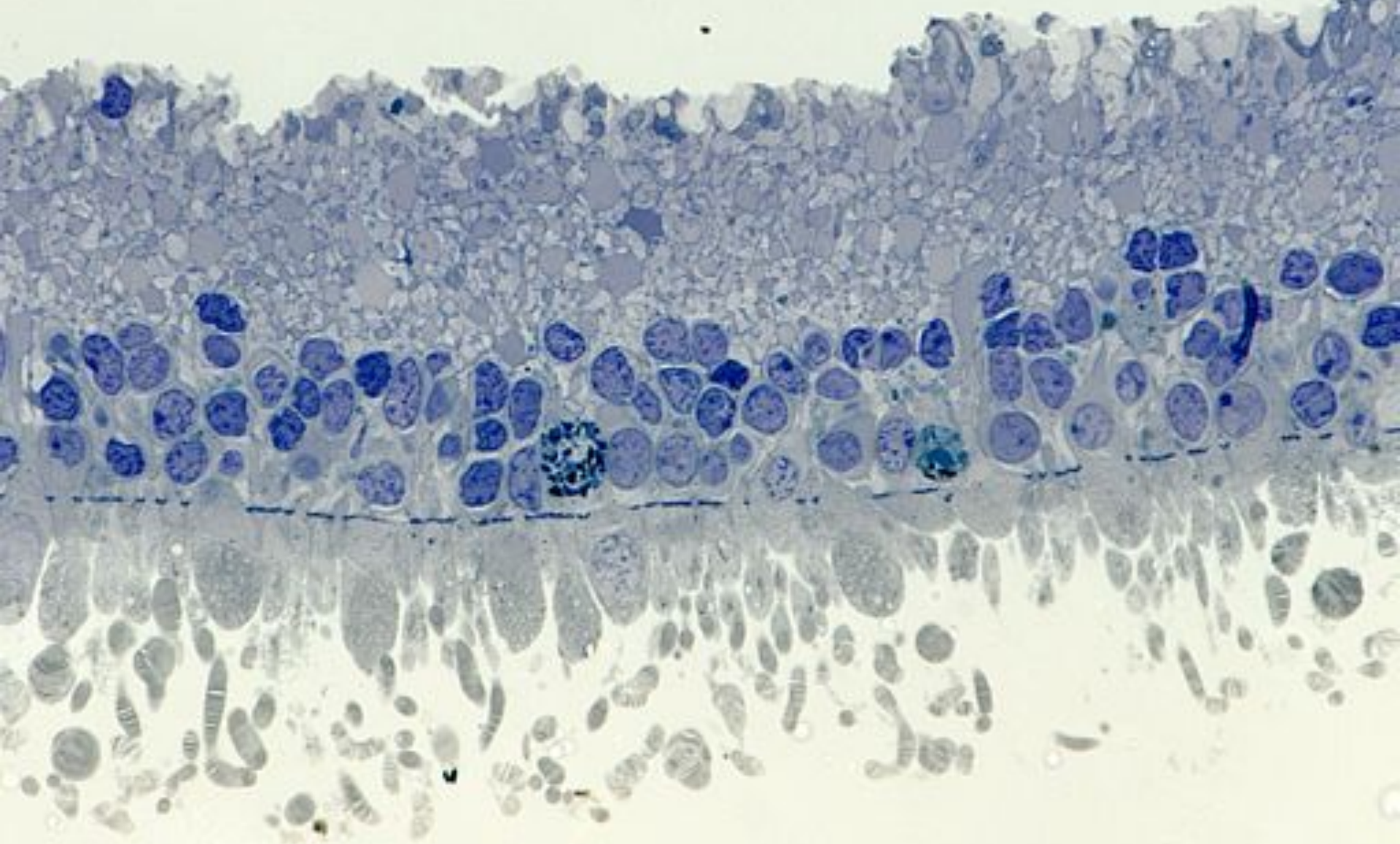
20  $\mu$ m

# 5 8-layers of pathology, fibrovascular scar



20  $\mu\text{m}$

# 6 nucleated RPE in ONL



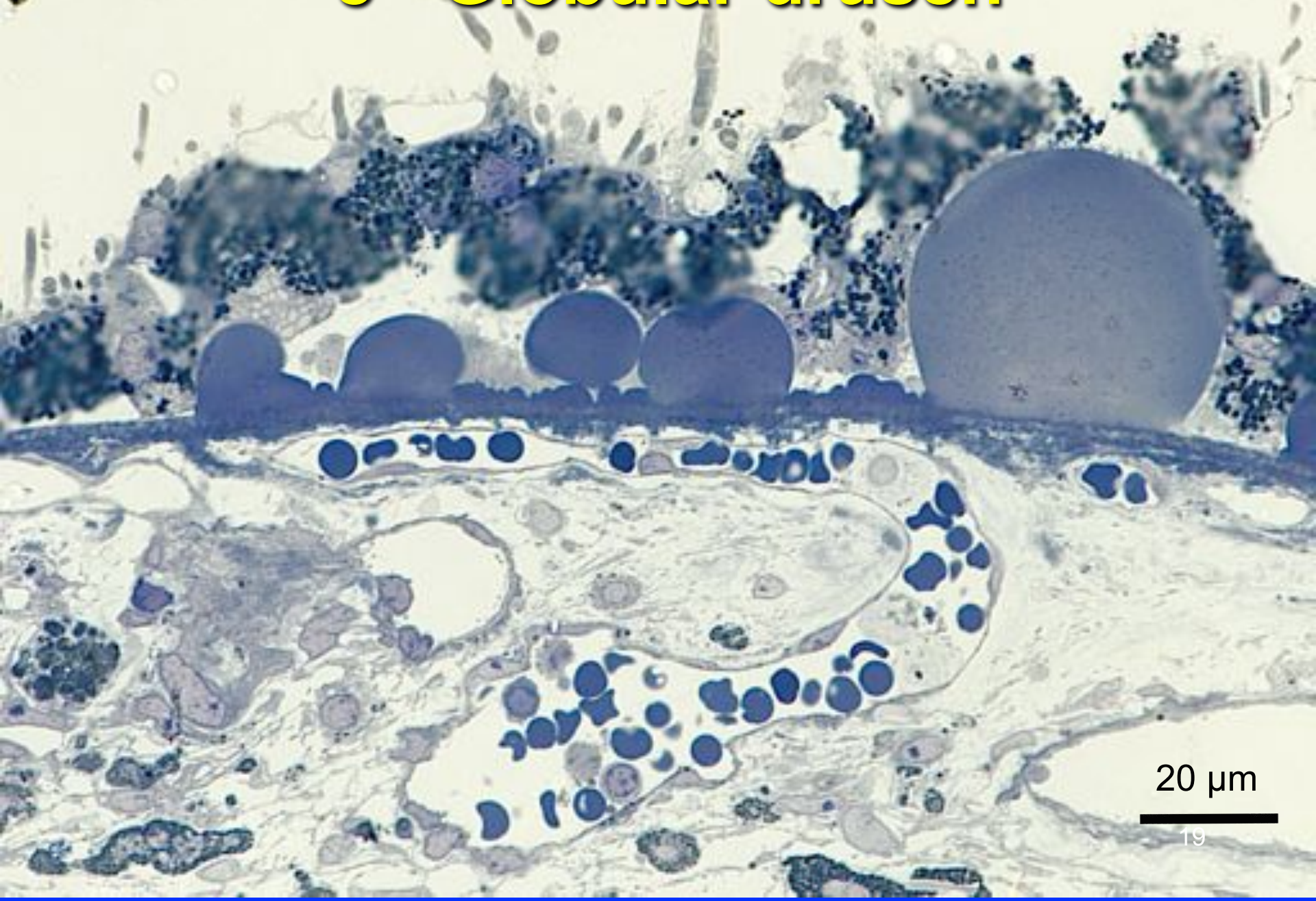
20  $\mu$ m

# 7 tall SDD, OS with disks



20  $\mu$ m

# 8 - Globular drusen



20  $\mu$ m

# Project MACULA Case Report

Christine A. Curcio, PhD

