

Project MACULA

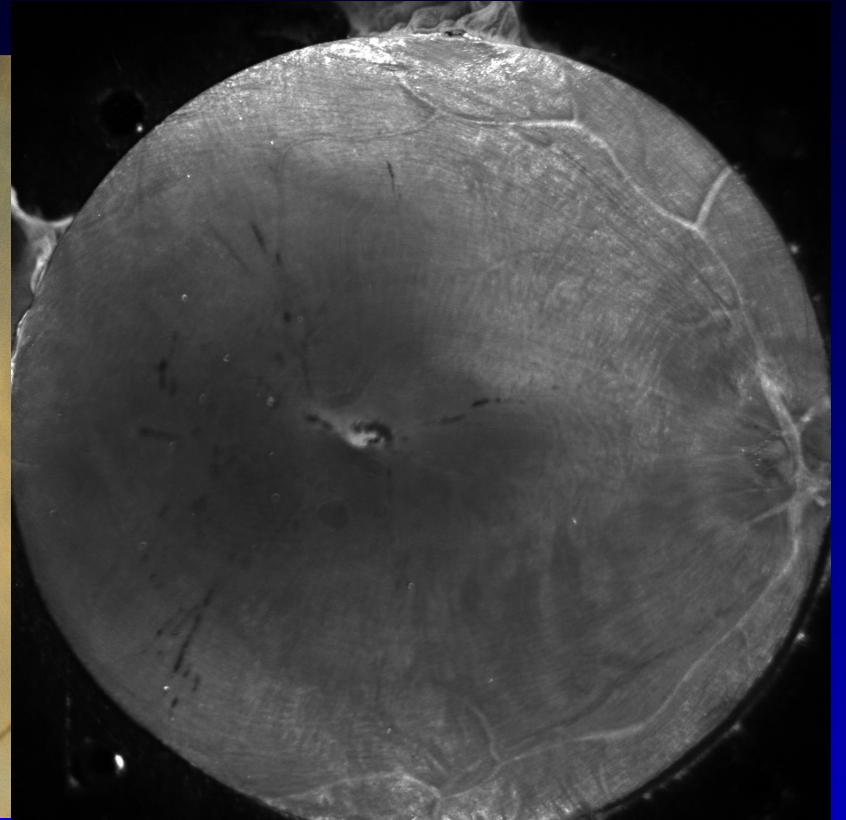
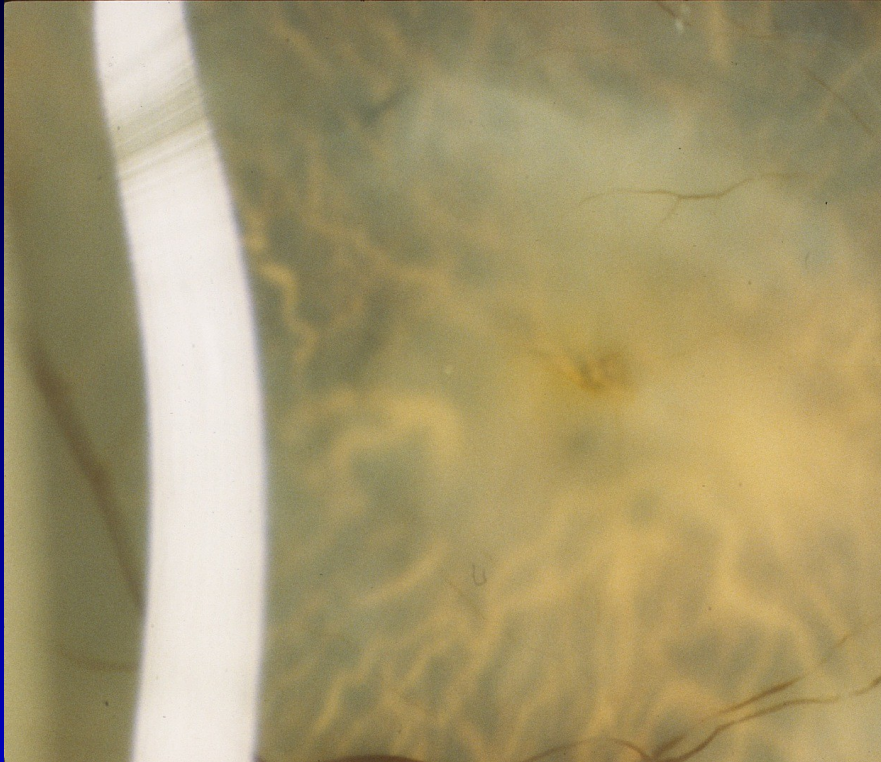
Case Report

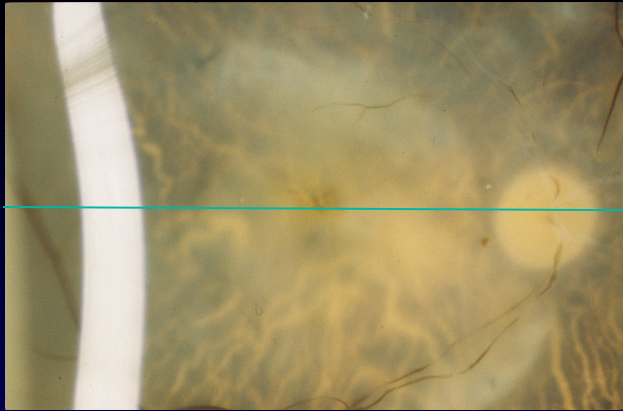
0099029R

85, Caucasian female

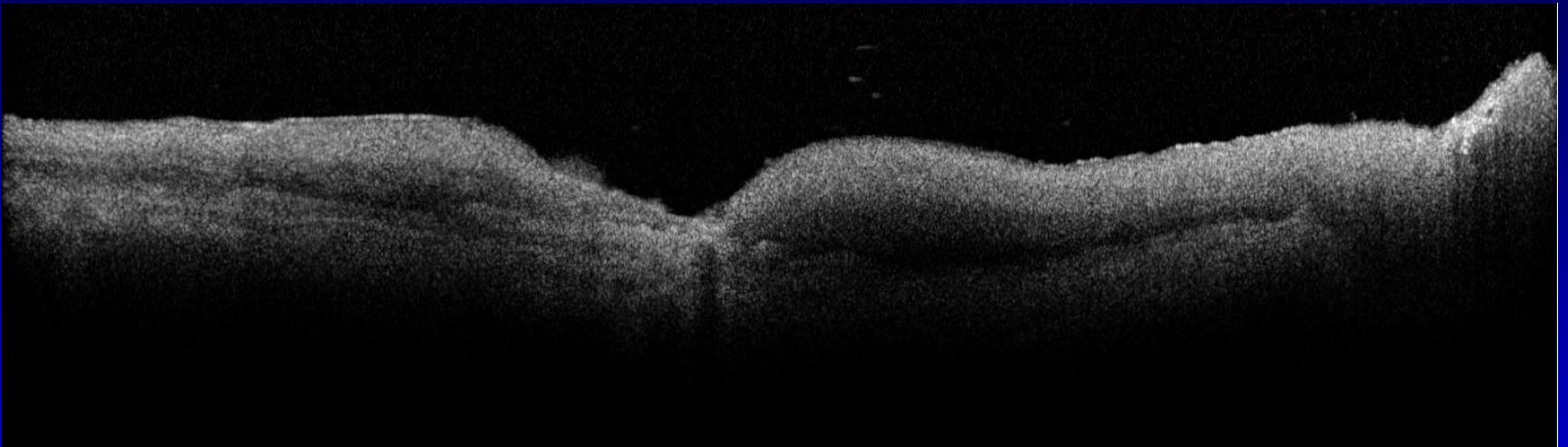
Neovascular AMD

Shown as L





Foveal sections



↑
1

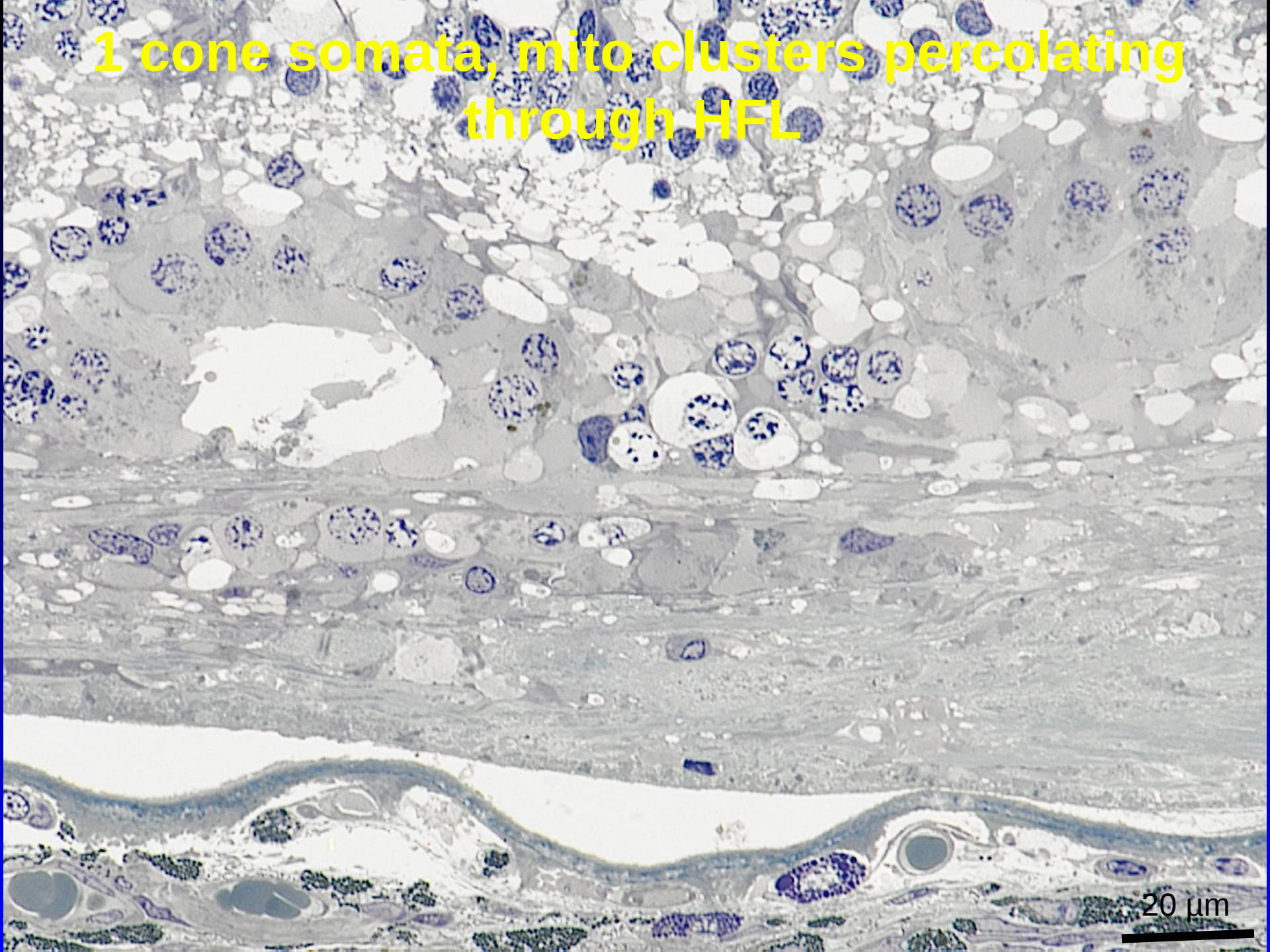
↑
2

↑
3

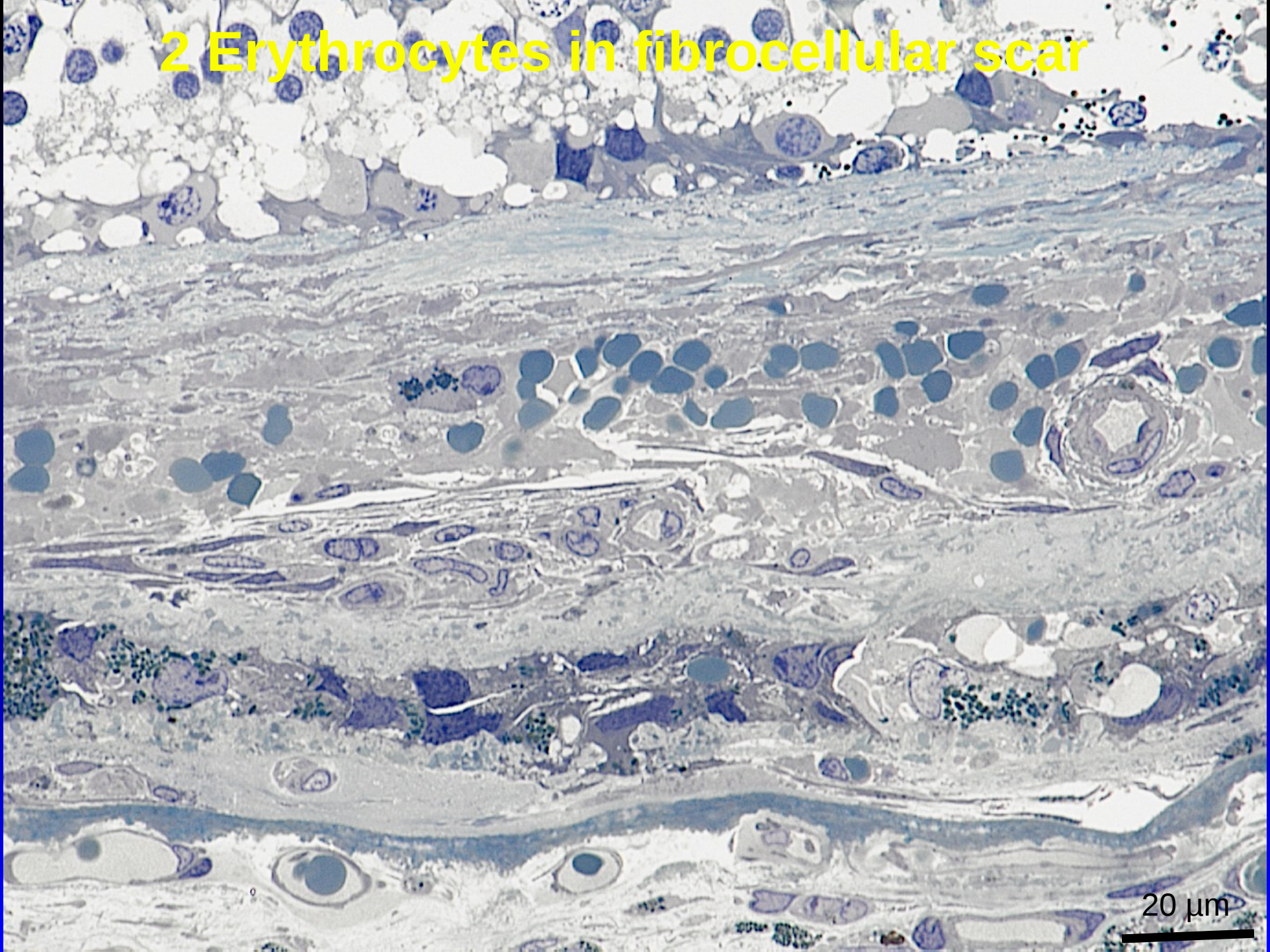
3

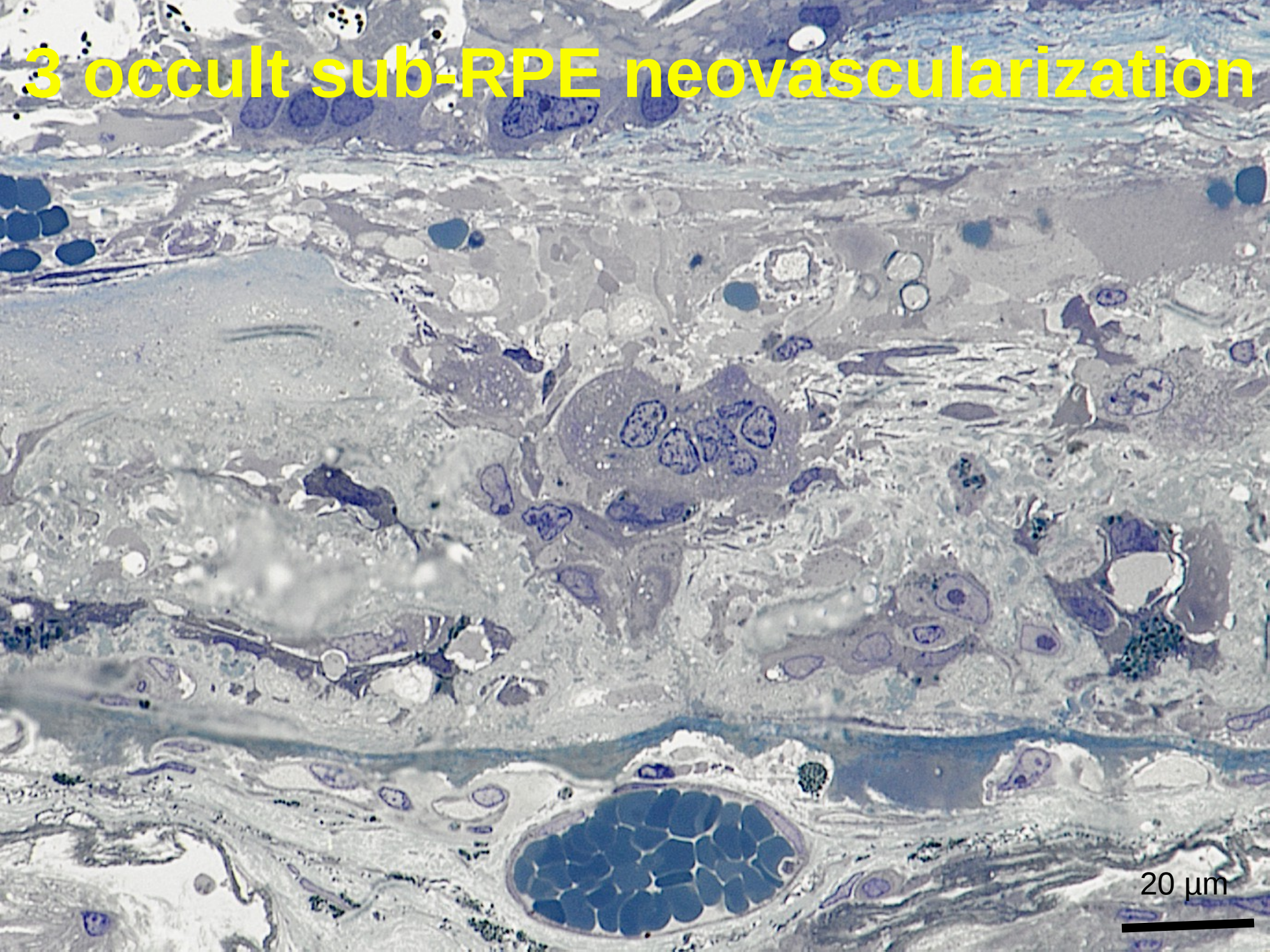
↑ ↑
4 5

1 cone somata, mito clusters percolating through HFL



2 Erythrocytes in fibrocellular scar

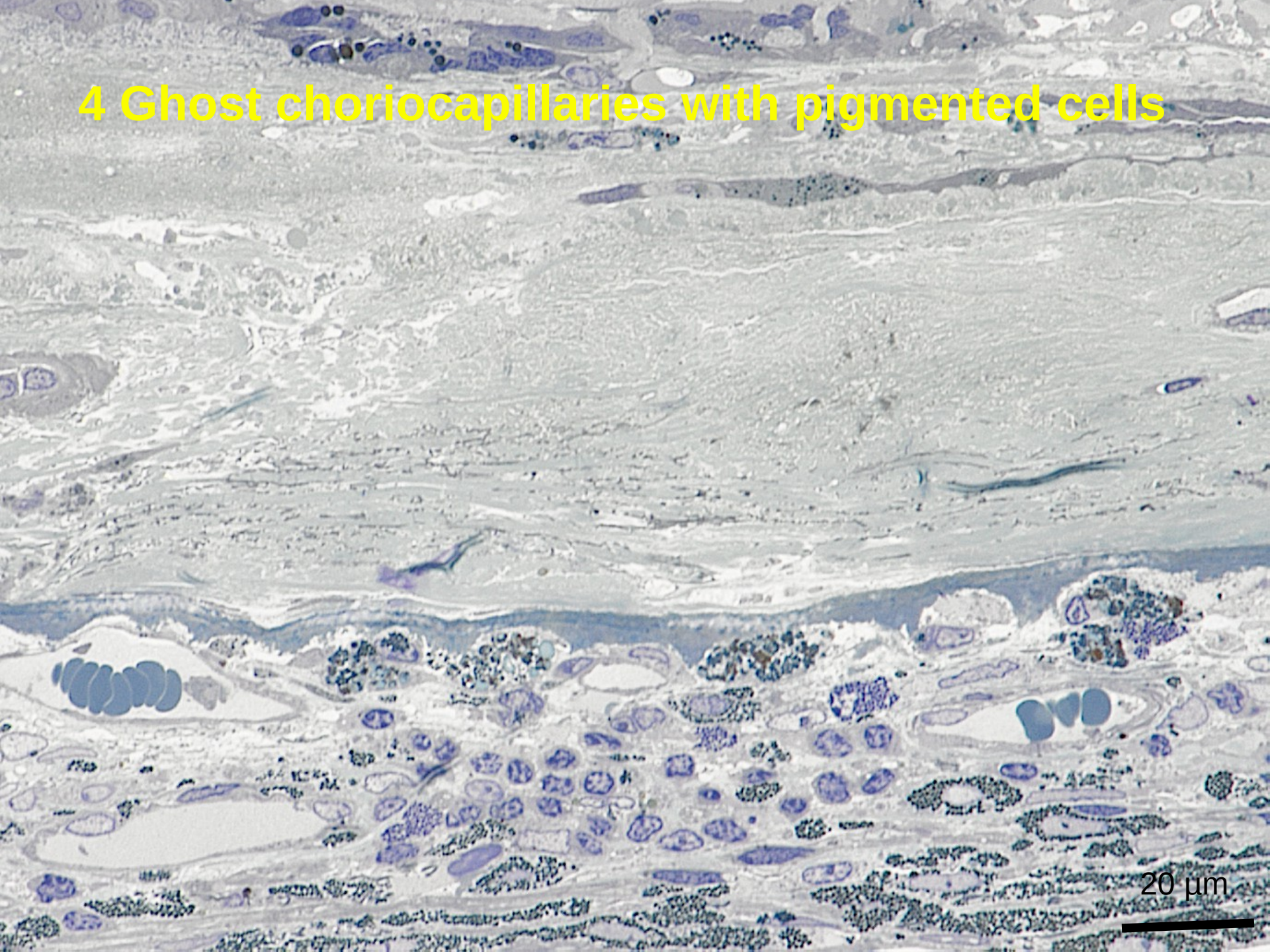




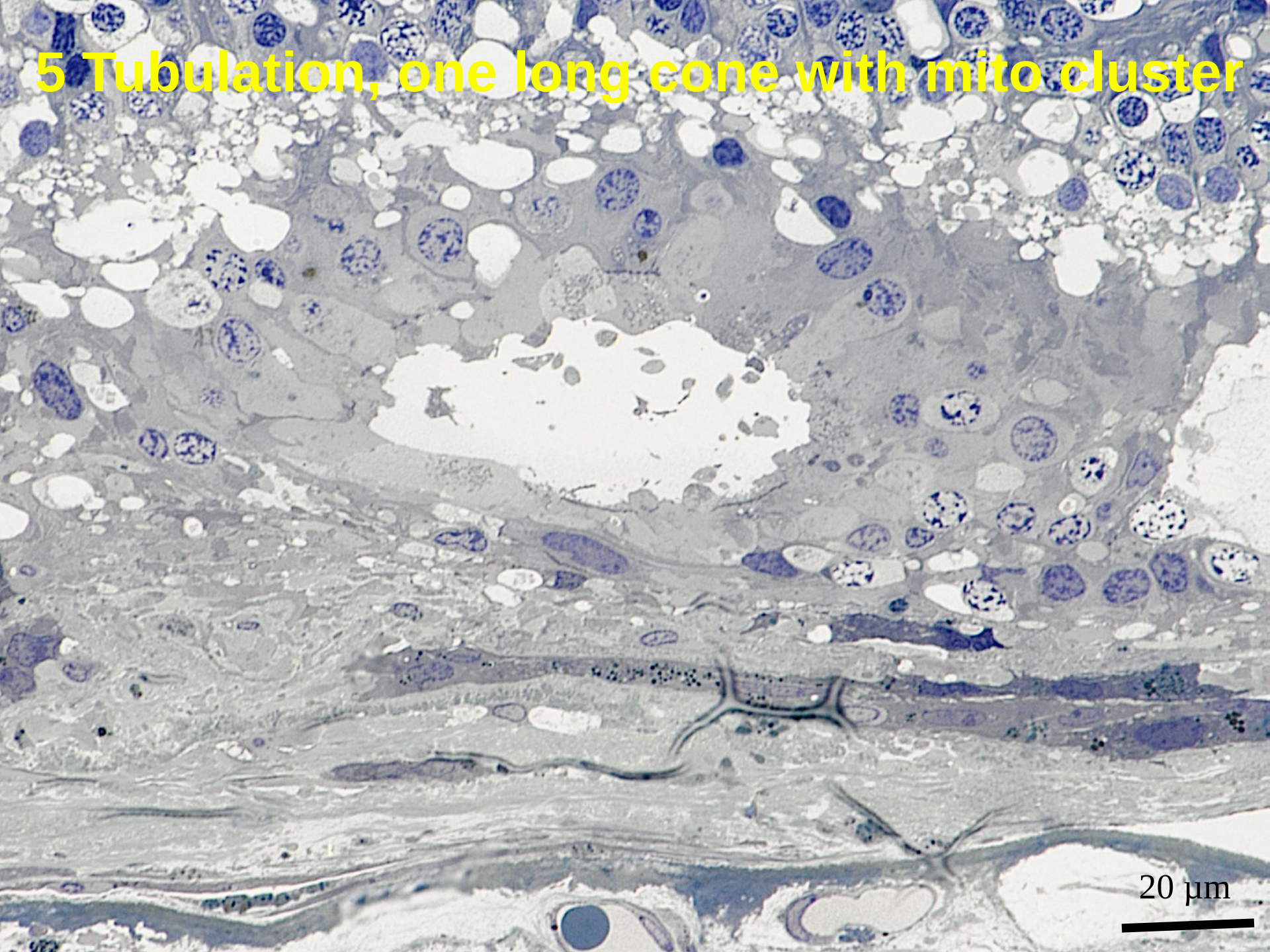
3 occult sub-RPE neovascularization

20 μ m

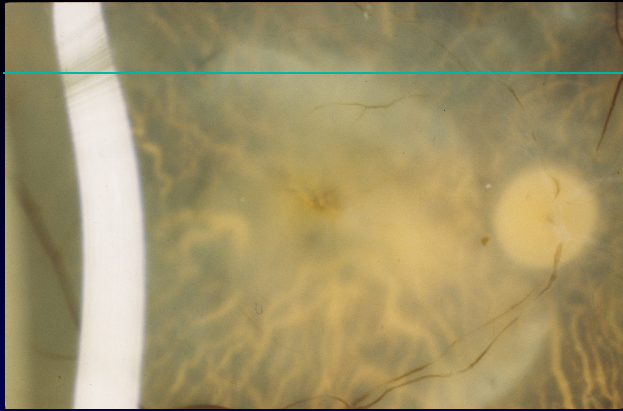
4 Ghost choriocapillaries with pigmented cells



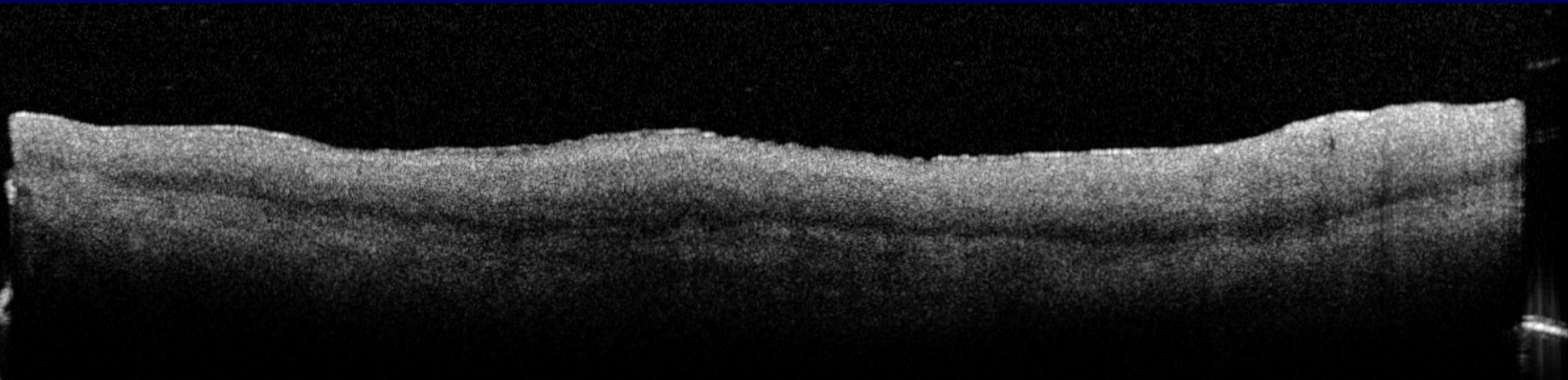
5 Tubulation, one long cone with mito cluster



20 μ m



Perifoveal sections



↑
1

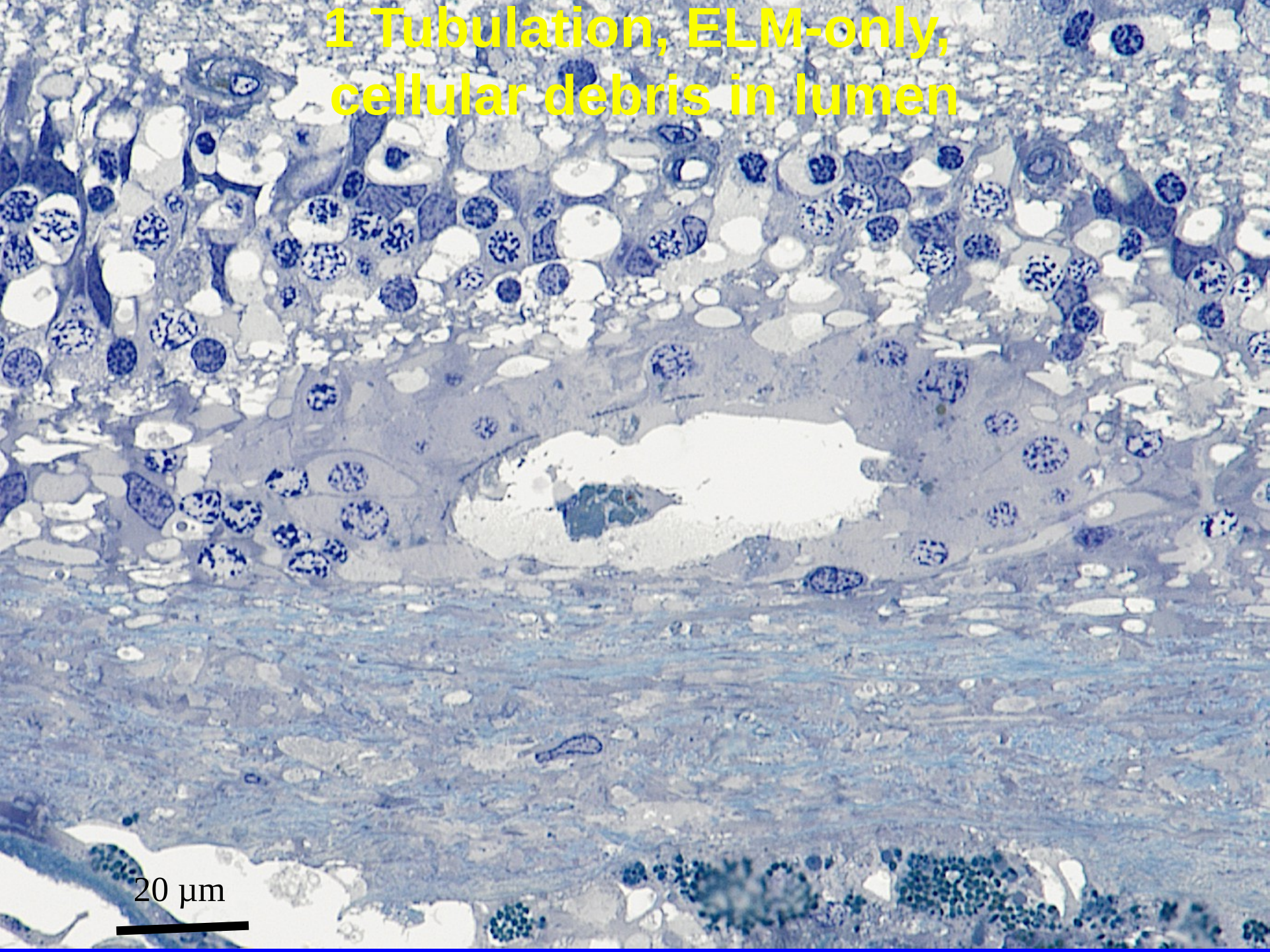
↑
2

↑
3

↑
4

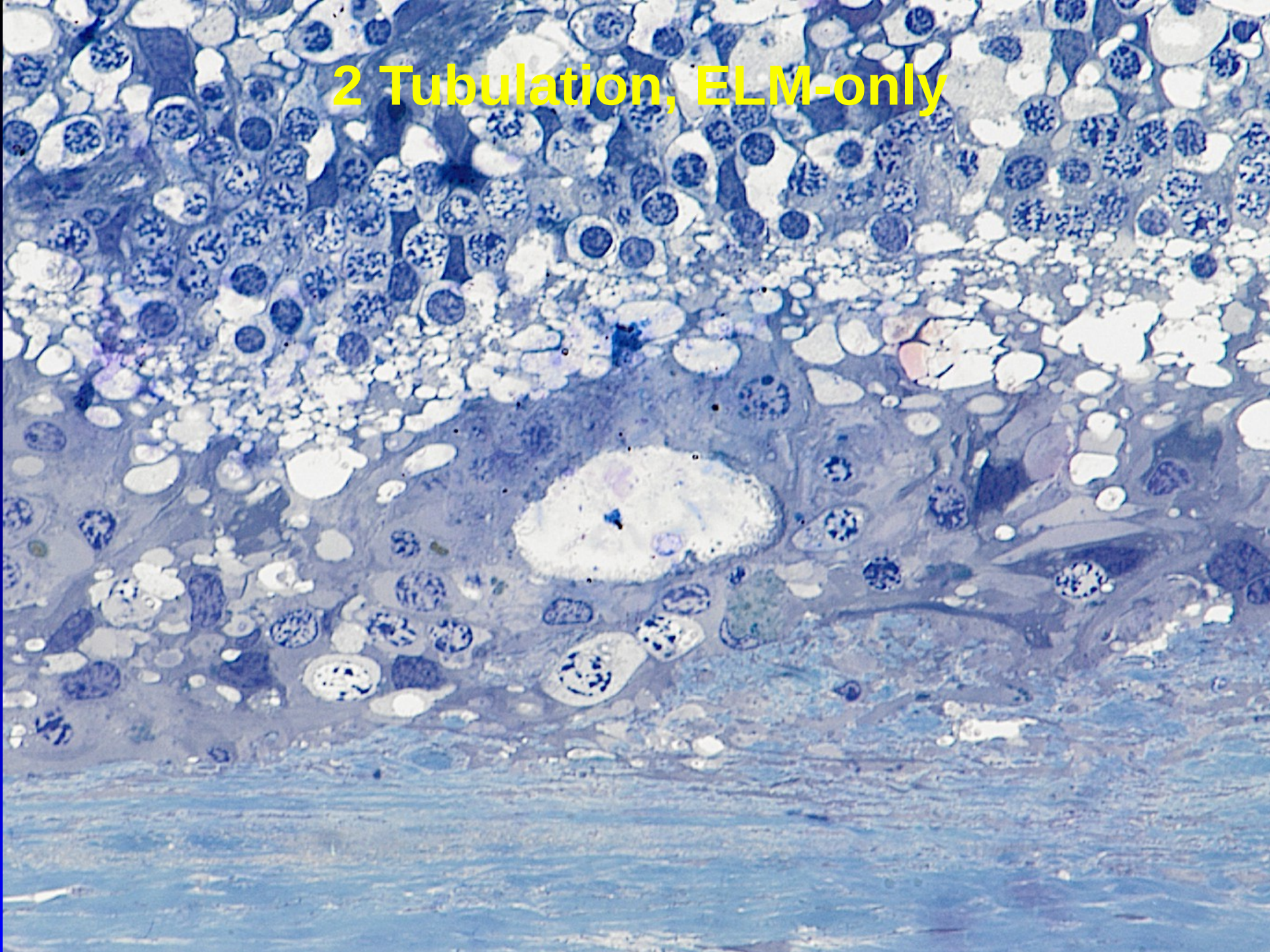
↑
5

1 Tubulation, ELM-only,
cellular debris in lumen



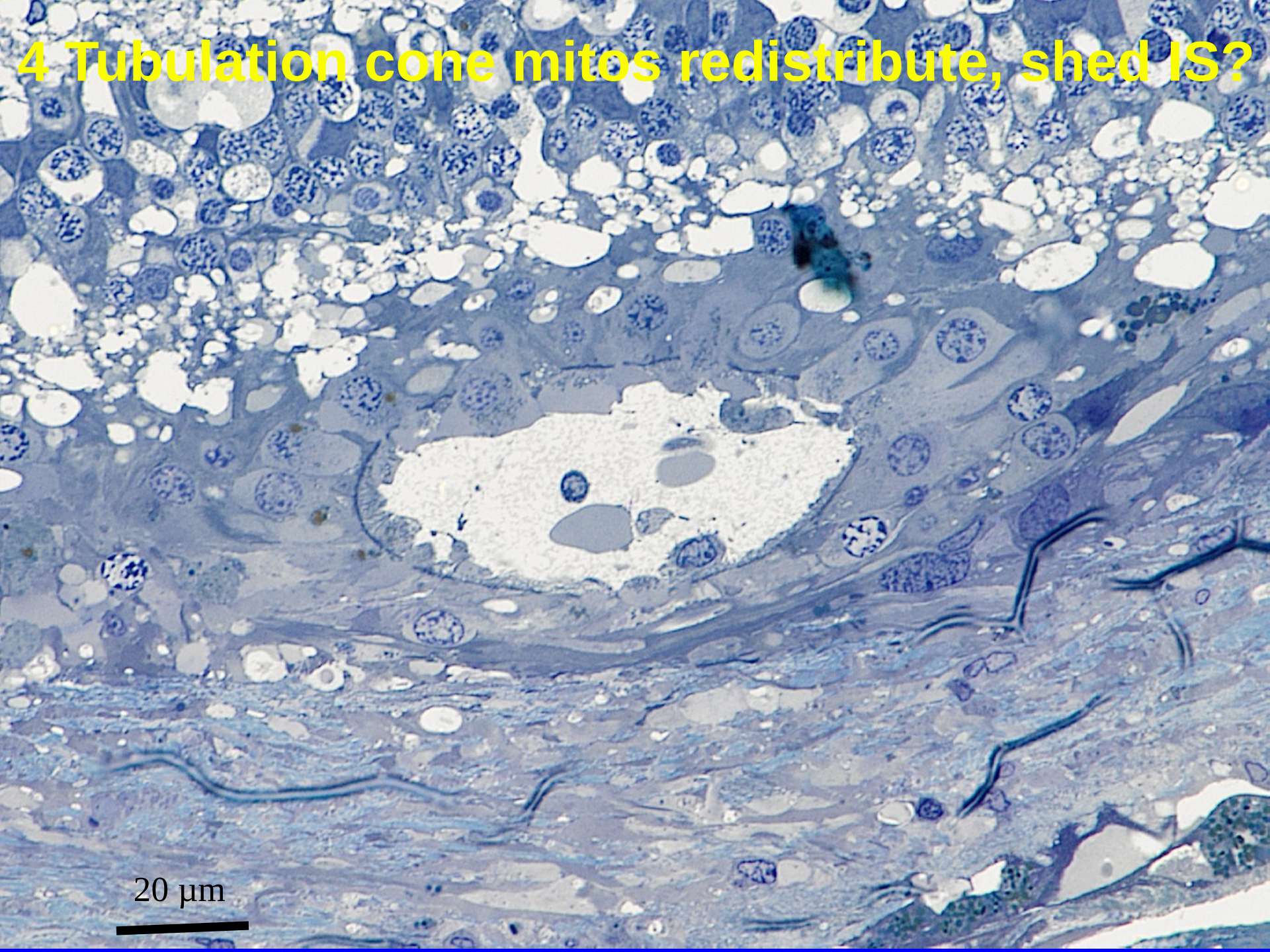
20 μ m

2 Tubulation, ELM-only



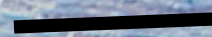
3 Tubulation, ELM-only, tiny



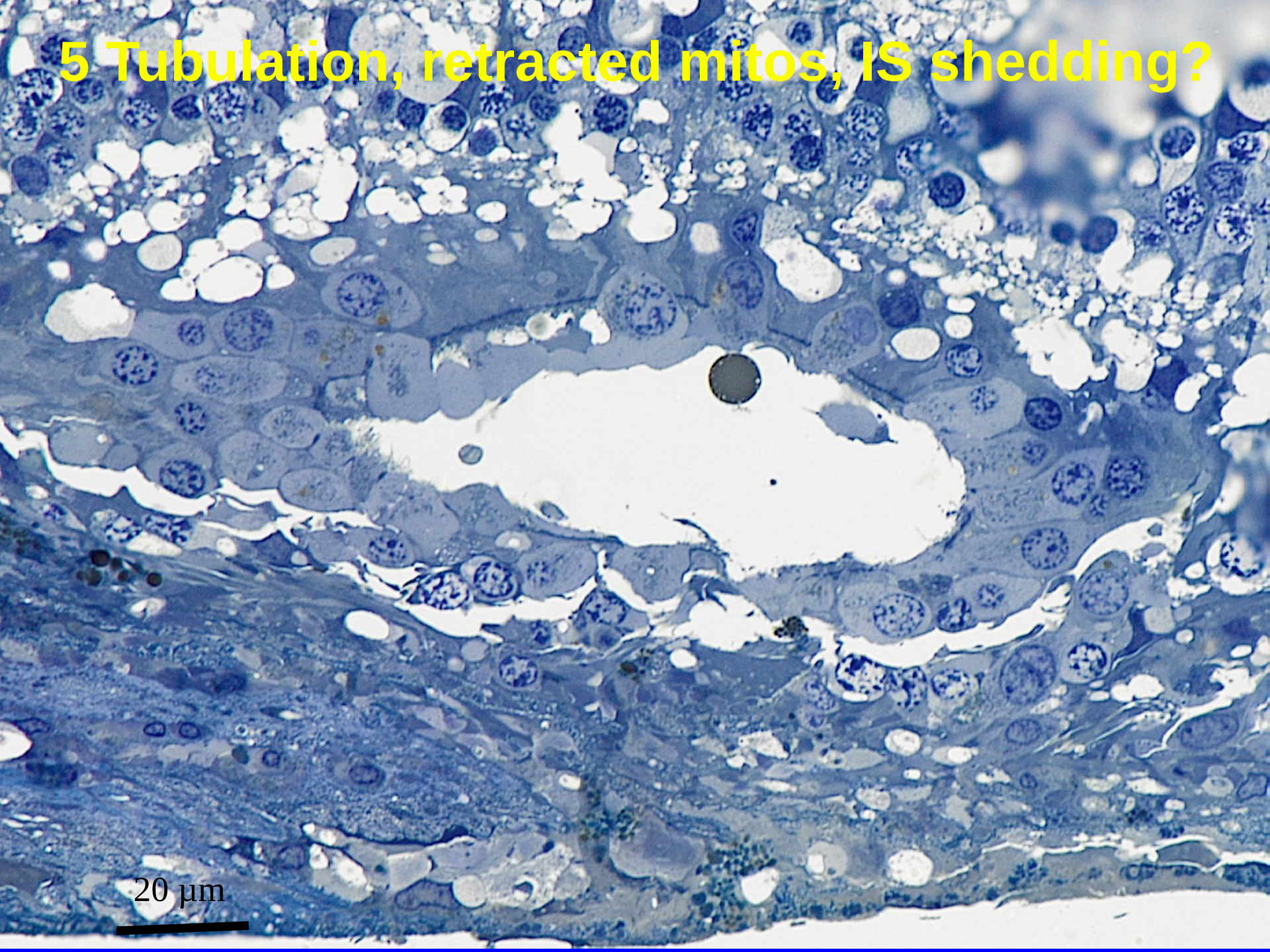


4 Tubulation cone mitos redistribute, shed IS?

20 μ m



5 Tubulation, retracted mitos, IS shedding?



20 μm

Project MACULA Case Report

Christine A. Curcio, PhD

