

Project MACULA

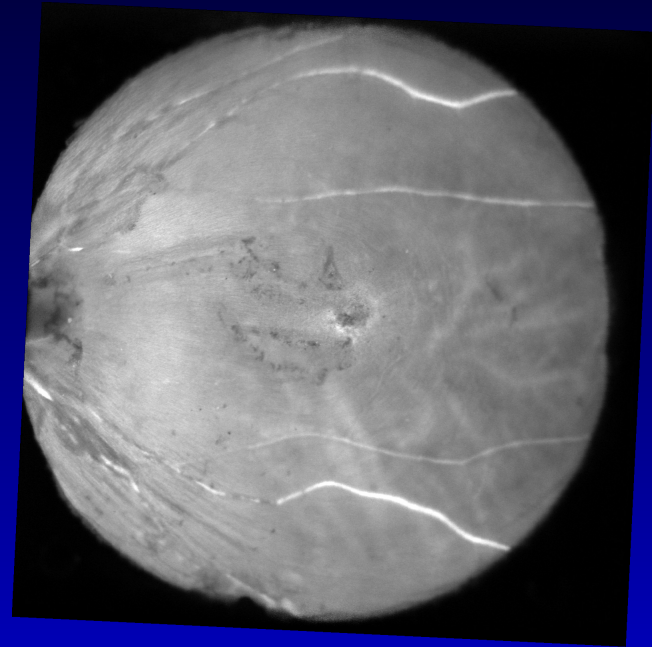
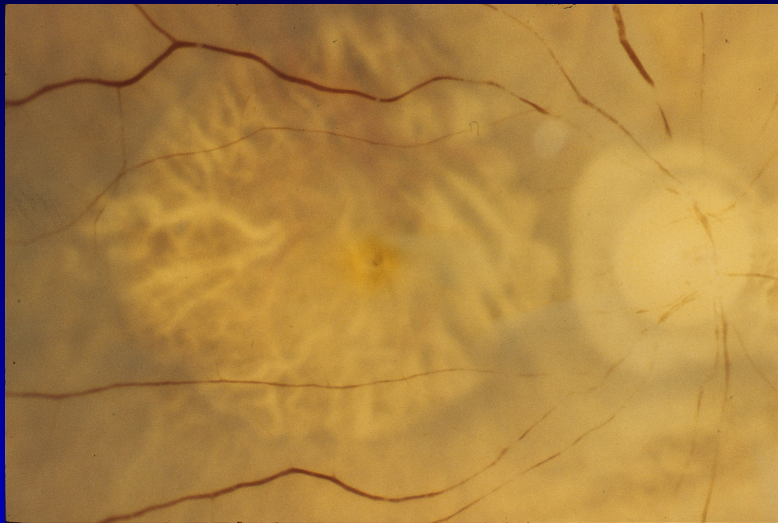
Case Report

0099020R

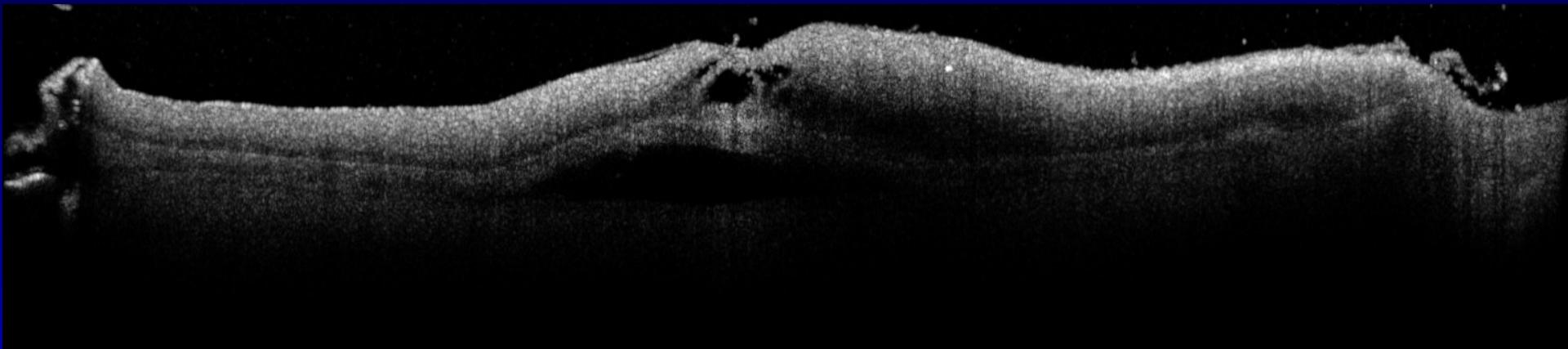
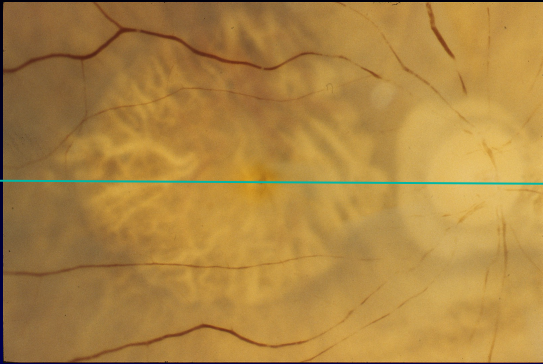
81, Caucasian female

Neovascular AMD

Shown as L



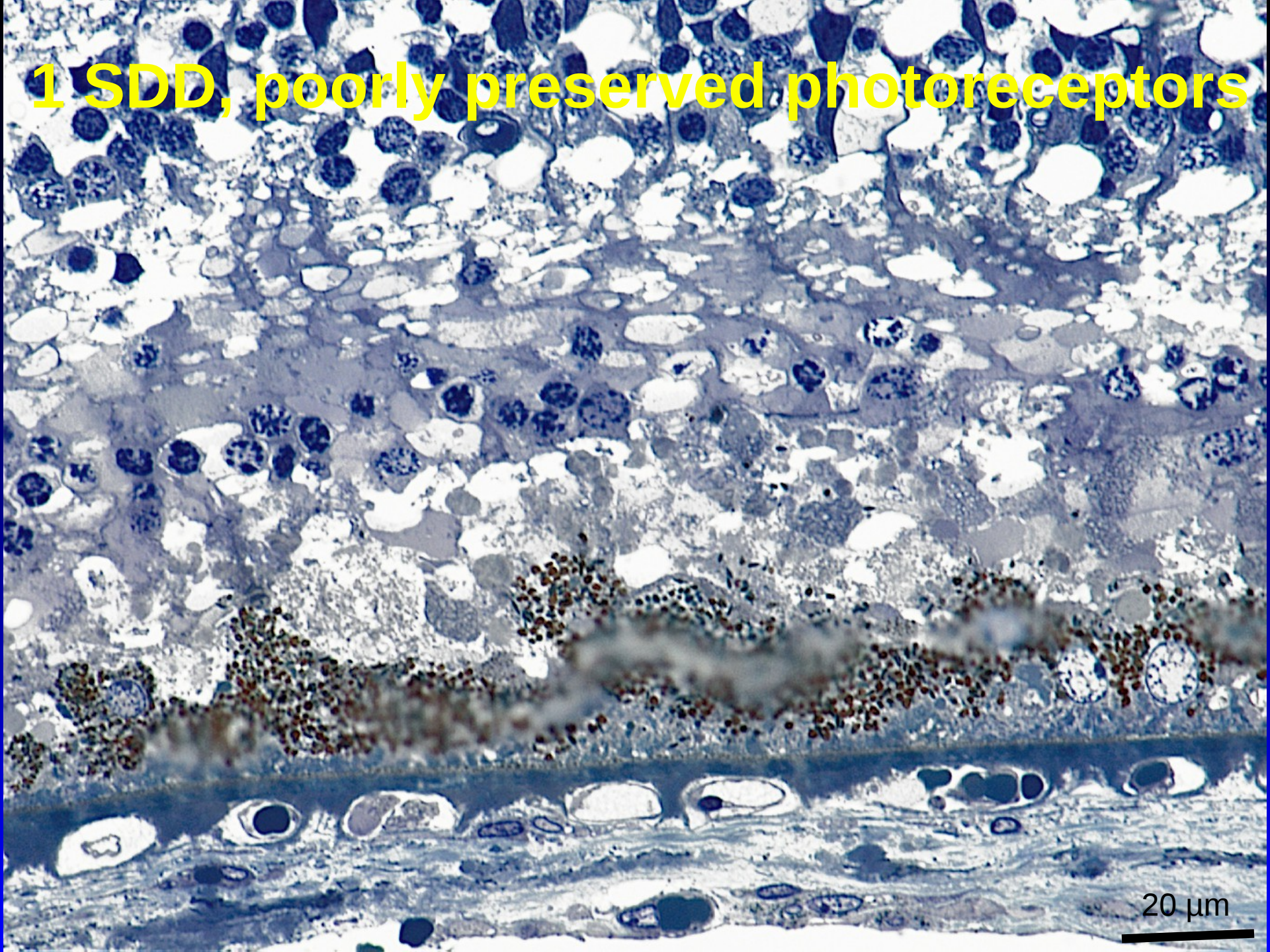
Foveal sections

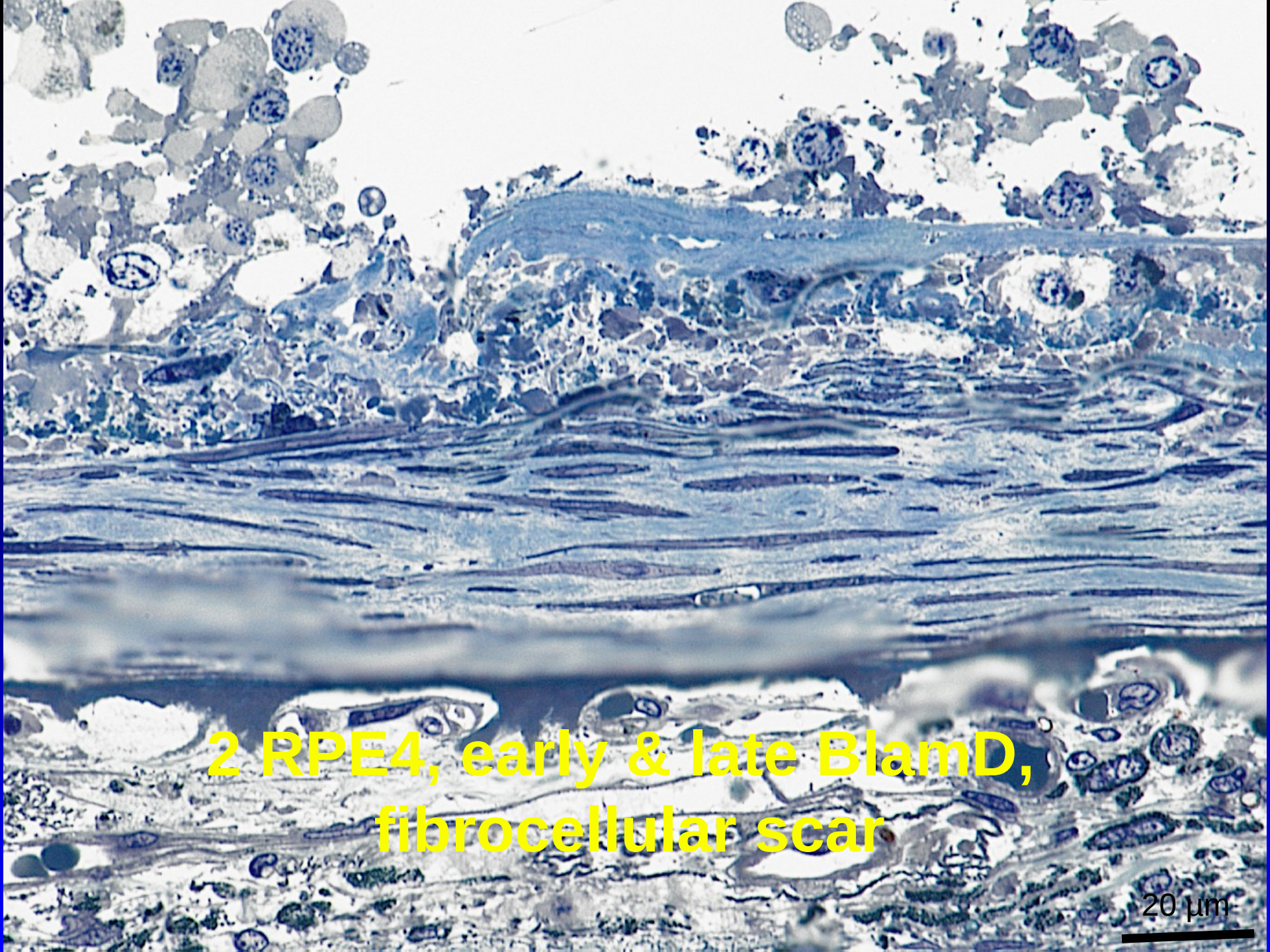


↑
1

↑
2

1 SDD, poorly preserved photoreceptors

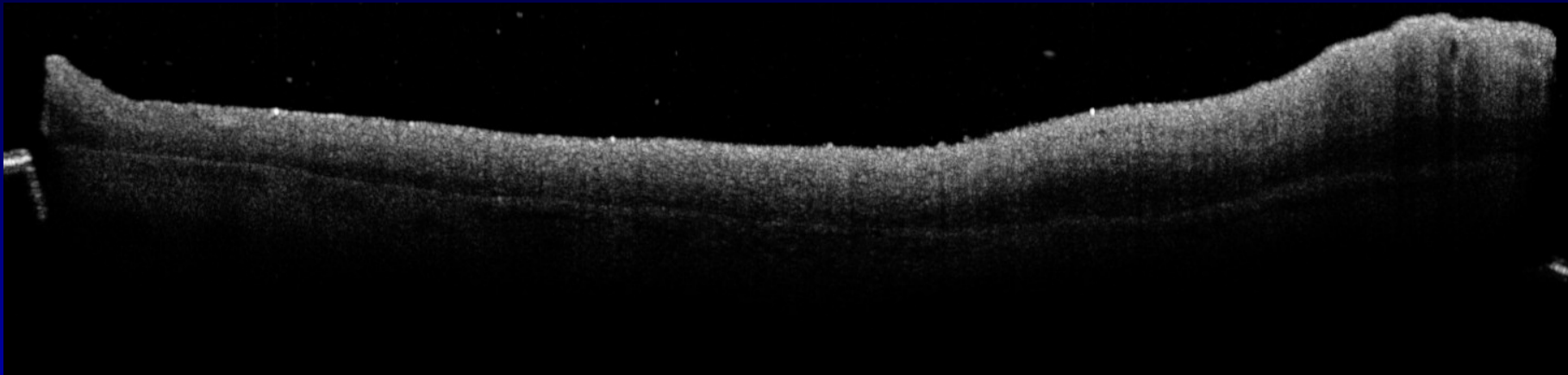
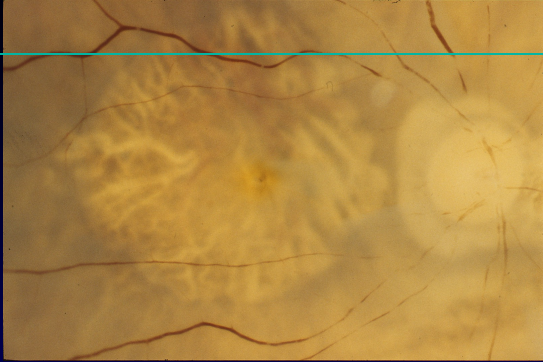




2 RPE4, early & late BlamD,
fibrocellular scar

20 μm

Perifoveal sections



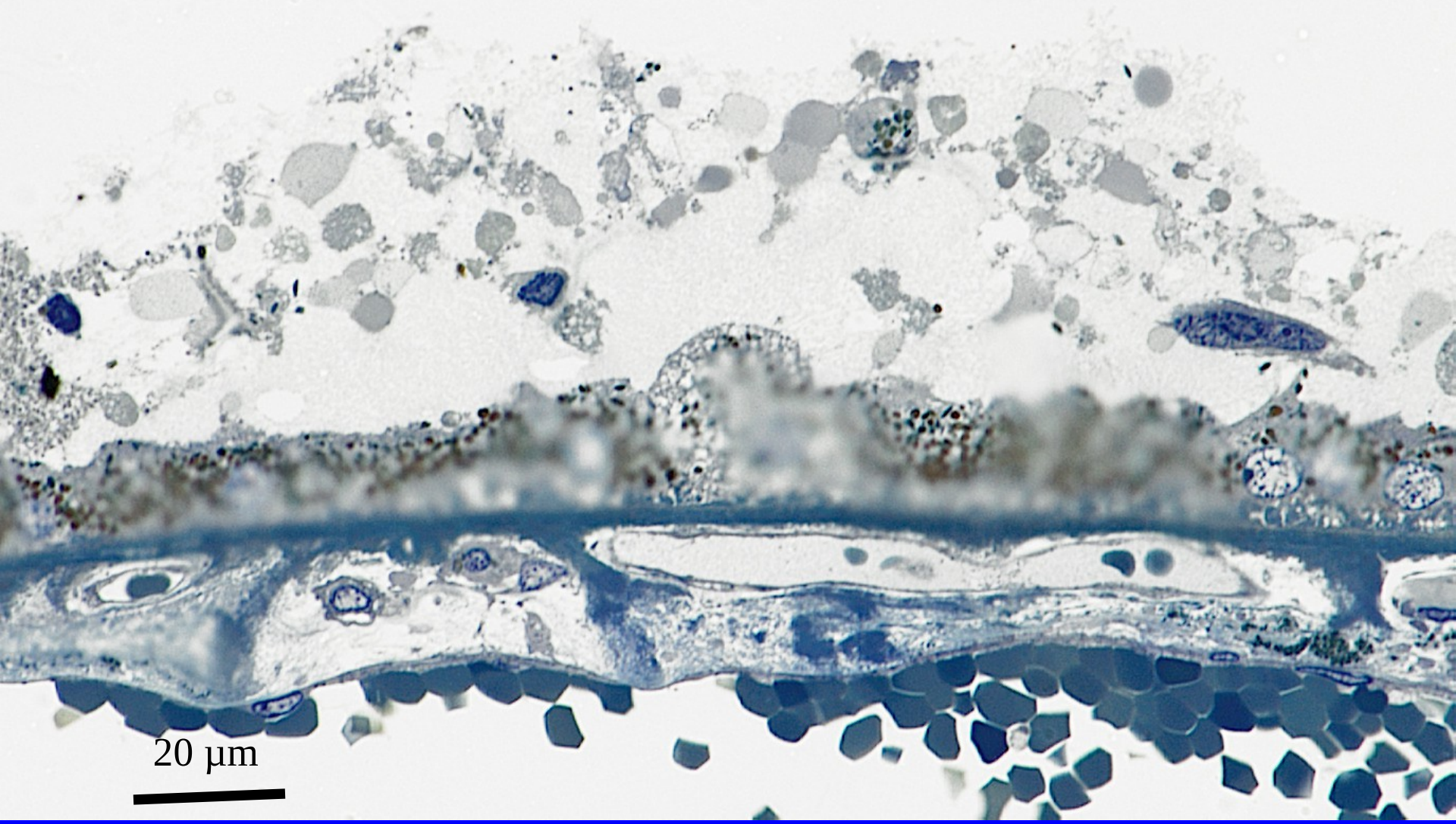
↑
1

↑
2

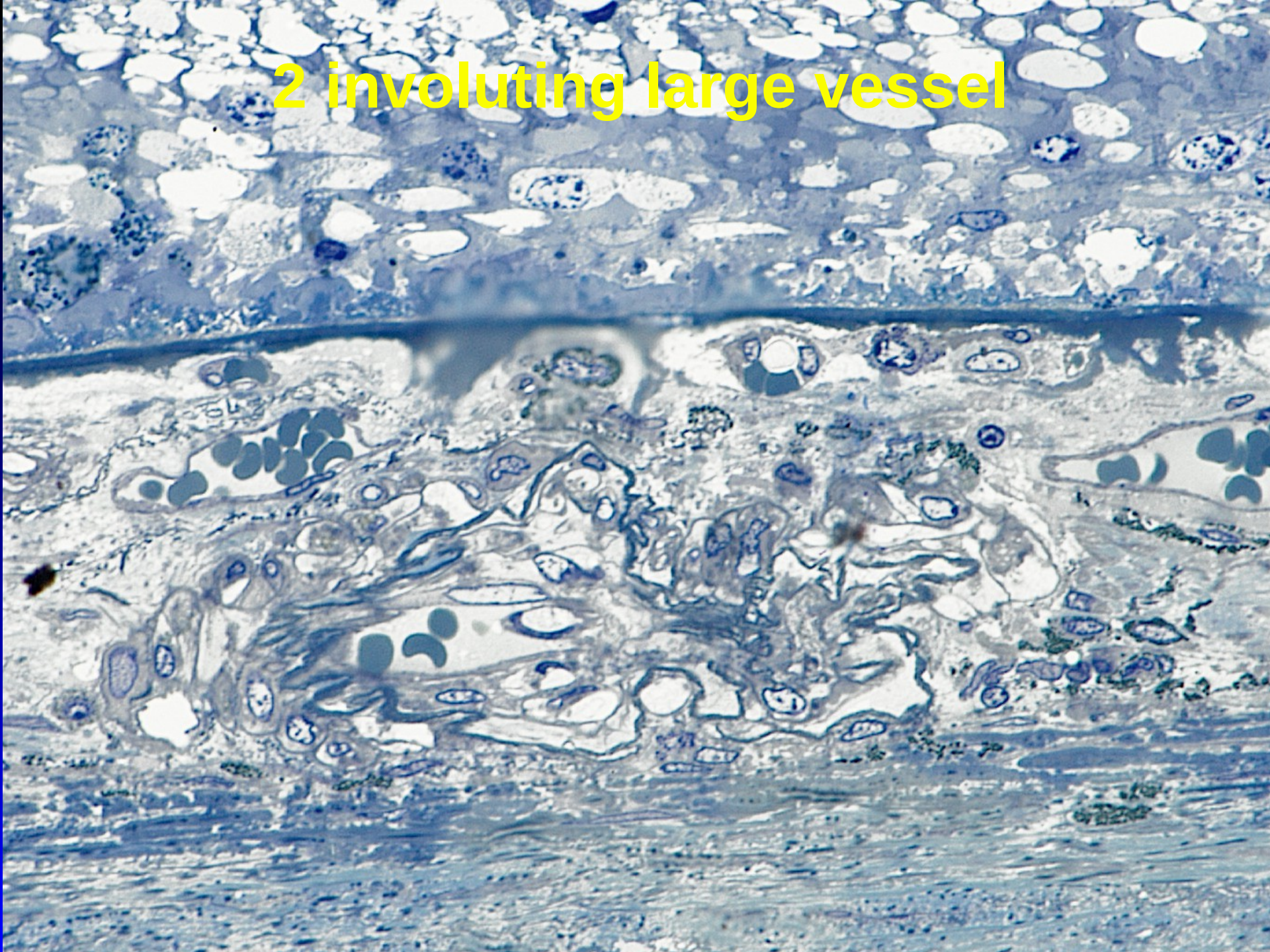
↑
3

↑
4

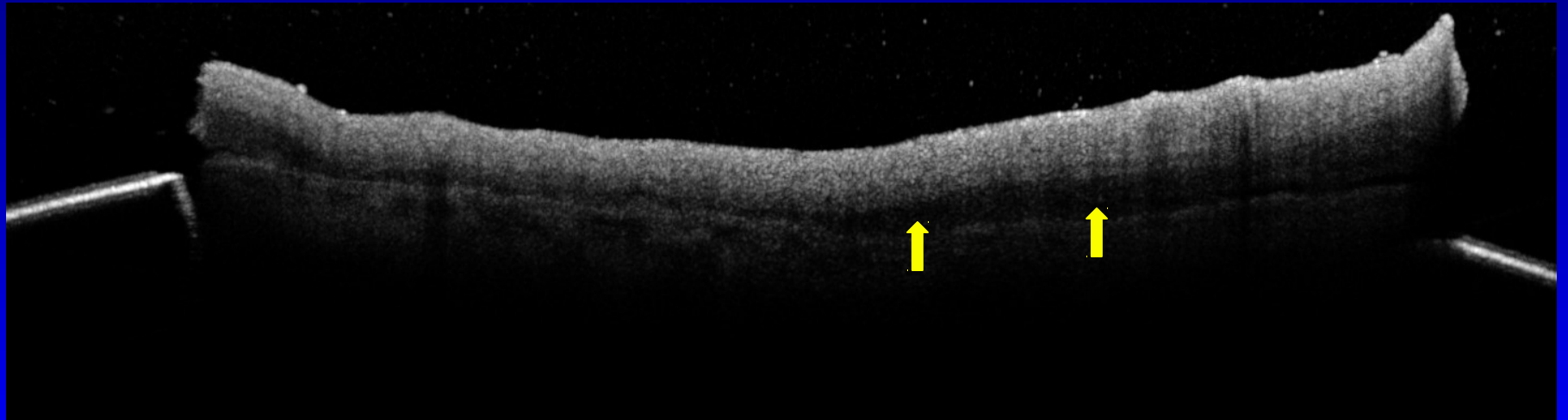
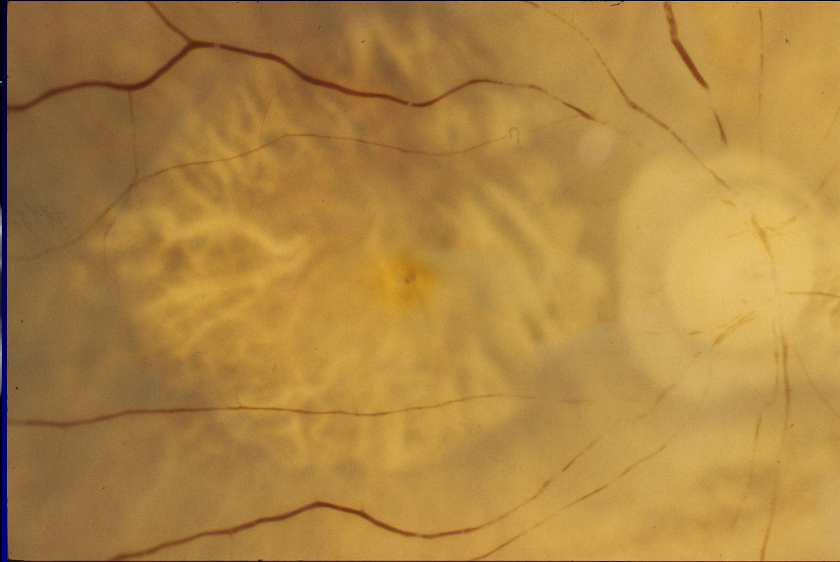
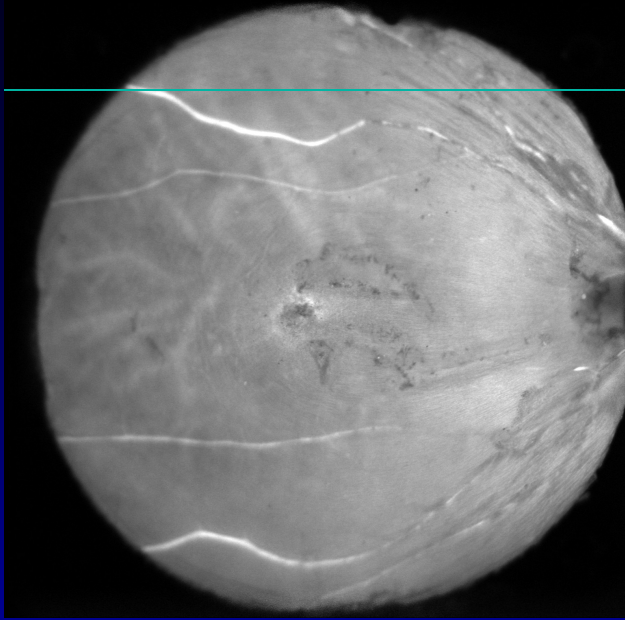
1 SDD, very pale, in parapapillary area



2 involuting large vessel



SDD at superior edge of atrophy



Project MACULA Case Report

Christine A. Curcio, PhD

